



Dimensional Class:	MEDIUM	Classe Dimensionale:	MEDIA
Standard Color:	GREEN	Colore Standard:	VERDE
Mated Connectors Height:	see page 190-191-192	Altezza Connettore Completo:	vedere pag. 192
Versions:	Modular, Polarized	Versioni:	Modulare, Polarizzato
Single Mold Poles:	2 and 3 (Modular) from 2 to 25 with combined housings (Polarized)	Vie Monolitiche:	2 e 3 (Modulare) da 2 a 25 con corpi agganciati (Polarizzato)
Metric Pitches:	.197 in (5 mm), .394 in (10 mm)	Passi Metrici:	5 mm, 10 mm
Imperial Pitches:	.200 in (5.08 mm), .400 in (10.16 mm)	Passi in Pollici:	5,08 mm, 10,16 mm



CPM_0P1



CPM_9M1



CPM_0P1



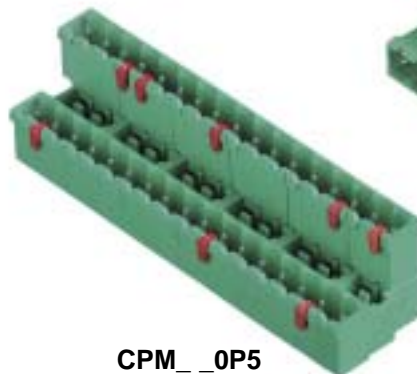
CPM_9P5



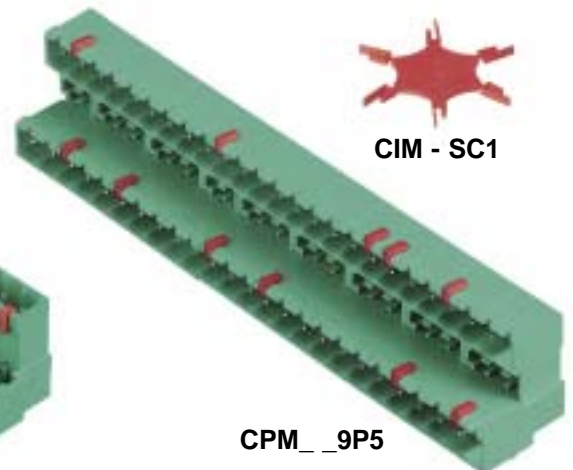
CPM_9P6



CPM_0M2



CPM_0P5



CIM - SC1

The CPM connector Series for printed circuit boards can be polarized either by using COF-SP1 Polarization Pegs on the matched female and removing the corresponding contact pins, or by means of CIM-SC1 Coding Clips.

For further details please refer to page 186.

The CPM connector Series satisfies the user's mounting needs with the following possibilities:

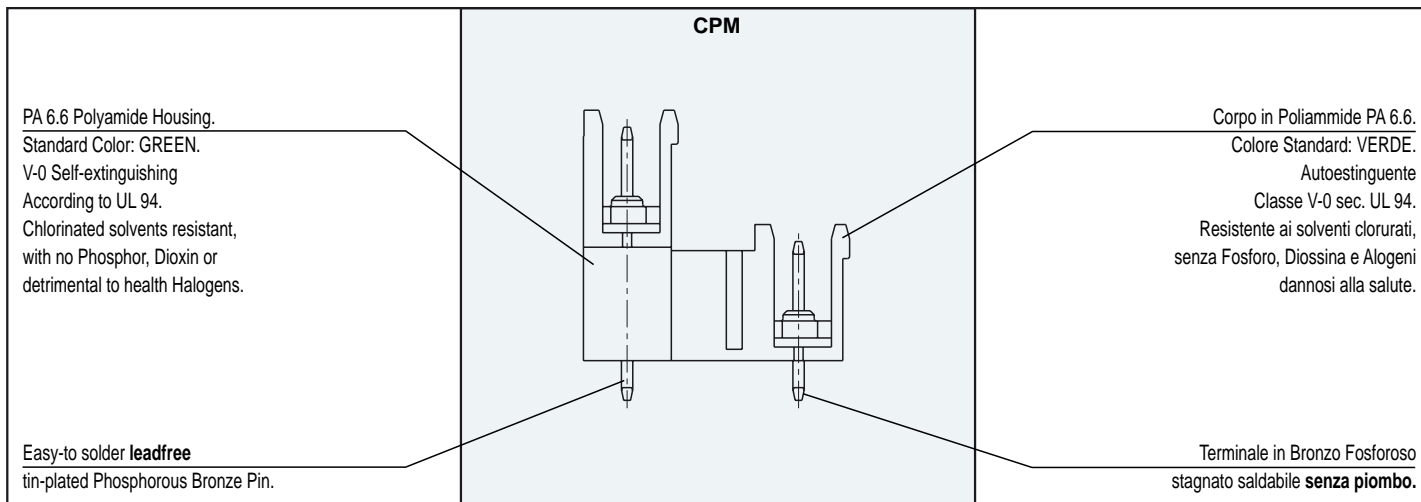
- mating with CIF, CVF and CCF female connectors;
- using individual single mold connectors from 2 to 3 poles;
- combining Modular connectors from 2 to 3 poles or use Polarized connectors from 2 to 25 poles side by side to obtain any number of poles;
- minimizing the stock by storing only selected connectors (ex. 2 - 3... 25 poles) to enable combinations as described above;
- using a custom Kit package to simplify the product management (part-number reduction), to minimize the stock, to improve the assembly and to reduce production errors.

Il connettore Serie CPM per circuiti stampati può essere polarizzato sia usando le Spine di Polarizzazione COF-SP1 sulla femmina accoppiata e togliendo dei contatti, sia con Staffe di Codifica CIM-SC1.

Per ulteriori dettagli consultare la pagina 186.

Il connettore Serie CPM soddisfa le esigenze di montaggio dell'utilizzatore; infatti è possibile:

- accoppiarlo con i connettori femmina CIF, CVF e CCF;
- utilizzare singolarmente i connettori monolitici da 2 e 3 vie;
- comporre i connettori Modulari da 2 a 3 vie oppure affiancare i connettori Polarizzati da 2 a 25 vie per ottenere qualsiasi numero di vie;
- gestire uno stoccaggio minimo di connettori (es. 2 - 3... 25 vie) per ottenere quanto sopra;
- utilizzare le confezioni Kit che permettono una semplificazione della gestione del prodotto (riduzione dei part-number), del magazzino, dell'assemblaggio, nonché una riduzione dei rischi d'errore.



PA 6.6 Polyamide Housing.
Standard Color: GREEN.
V-0 Self-extinguishing
According to UL 94.
Chlorinated solvents resistant,
with no Phosphor, Dioxin or
detrimental to health Halogens.

Easy-to solder **leadfree**
tin-plated Phosphorous Bronze Pin.

Corpo in Poliammide PA 6.6.
Colore Standard: VERDE.
Autoestinguente
Classe V-0 sec. UL 94.
Resistente ai solventi clorurati,
senza Fosforo, Diossina e Alogeni
dannosi alla salute.

Terminale in Bronzo Fosforoso
stagnato saldabile **senza piombo**.

Mechanical Characteristics

Insertion force per pole:	max. .674 lb (max. 3 N)
Withdrawal force per pole:	min. .337 lb (min. 1.5 N)
PCB thickness:	max. .094 in (max. 2.4 mm)
PCB hole diameter:	min. .055 in (min. 1.4 mm)
Operating temperature range:	-40 °F ÷ +230 °F (-40 °C ÷ +110 °C)
Climatic category:	40/110/21 Accordng to IEC 68-1

Electrical Characteristics

Rated voltage:	.197 in (5 mm) and .200 in (5.08 mm) pitch 300 V (UL, CSA)* .394 in (10 mm) and .400 in (10.16 mm) pitch 750 V (IMQ, VDE)*
Rated current:	15 A (UL, CSA)*
Contact resistance:	<15 mΩ
Insulation resistance:	>10 ⁹ Ω (500V DC)

*All the a.m. data refer to the highest values amongst the certificated ones (). **V** voltage, **I** current values and tightening torque are related to the norms to be applied to the product and to its use.

Caratteristiche Meccaniche

Forza di inserzione per contatto:	max. 3 N
Forza di disinserzione per contatto:	min. 1,5 N
Spessore circuito stampato:	max. 2,4 mm
Diametro fori circuito stampato:	min. 1,4 mm
Temperature di funzionamento:	-40 °C ÷ +110 °C
Categoria climatica:	40/110/21 Secondo IEC 68-1

Caratteristiche Elettriche

Tensione nominale:	passo 5 mm e 5,08 mm 300 V (UL, CSA)* passo 10 mm e 10,16 mm 750 V (IMQ, VDE)*
Corrente nominale:	15 A (UL, CSA)*
Resistenza di contatto:	<15 mΩ
Resistenza di isolamento:	>10 ⁹ Ω (500V CC)

*Per ogni caratteristica, i dati riportati si riferiscono ai massimi valori fra quelli certificati (). I valori di tensione **V** corrente **I** e, coppia di serraggio sono legati alle norme applicabili al prodotto ed al tipo di utilizzo.

Approvals

(see also "Certifications", page 22)



VDE: **Reg. N. 112754 ÜG**
250 V - 12 A - T 80 for 5 mm and 5.08 mm pitch
750 V - 12 A - T 80 for 10 mm and 10.16 mm pitch



IMQ: **Certificate with Surveillance IMQ CSv EM672**
250 V - T 110 - 12 A - 1.5 mm² for 5 mm and 5.08 mm pitch
750 V - T 110 - 12 A - 1.5 mm² for 10 mm and 10.16 mm pitch



CSA: **File LR 102896-2**
300 V - 15 A for 5 mm and 5.08 mm pitch
600 V - 15 A for 10 mm and 10.16 mm pitch



UL: **File E 167473**
300 V - 12 A for 5 mm and 5.08 mm pitch
600 V - 12 A for 10 mm and 10.16 mm pitch
Application values for end-use equipment have to be
in accordance to UL norms and applicable to it.



Certificazioni

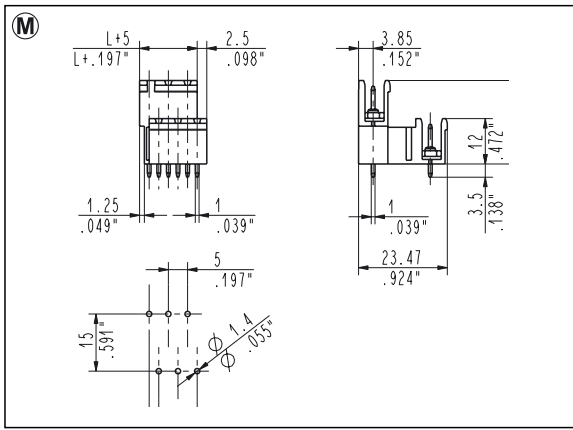
(vedi anche "Certificazioni", pag. 22)

VDE: **Reg. N. 112754 ÜG**
250 V - 12 A - T 80 per passo 5 mm e 5,08 mm
750 V - 12 A - T 80 per passo 10 mm e 10,16 mm

IMQ: **Certificato con Sorveglianza IMQ CSv EM672**
250 V - T 110 - 12 A - 1,5 mm² per passo 5 mm e 5,08 mm
750 V - T 110 - 12 A - 1,5 mm² per passo 10 mm e 10,16 mm

CSA: **File LR 102896-2**
300 V - 15 A per passo 5 mm e 5,08 mm
600 V - 15 A per passo 10 mm e 10,16 mm

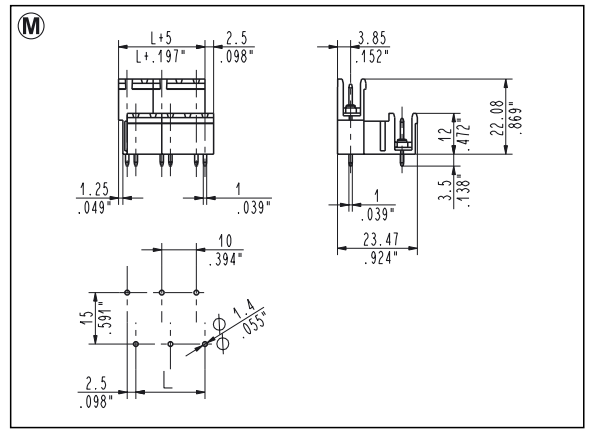
UL: **File E 167473**
300 V - 12 A per passo 5 mm e 5,08 mm
600 V - 12 A per passo 10 mm e 10,16 mm
I valori di utilizzo per l'apparecchiatura finale
devono essere conformi alle norme UL ad essa applicabili.



CPM_0M1 Straight, Modular Male
5 mm / .197" Pitch Weight per pole: 0.68 g

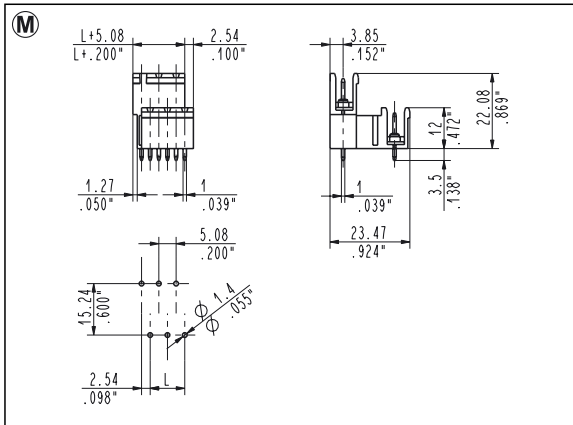
Poles	STD Code	L [mm]	L [inch]	Pcs/pack.	W [kg]
02	CPM020M1	5.00	0.197	250	0.68
03	CPM030M1	10.00	0.394	200	0.81

More poles are obtainable by combining modular connectors of 2 and 3 poles



CPM_0M2 Straight, Modular Male
10 mm / .394" Pitch Weight per pole: 0.94 g

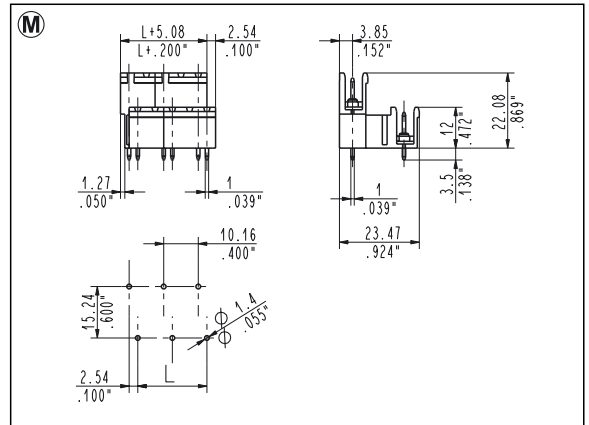
Poles	STD Code	L [mm]	L [inch]	Pcs/pack.	W [kg]
02	CPM020M2	10.00	0.394	175	0.75
03	CPM030M2	20.00	0.787	140	0.70
04	CPM040M2	30.00	1.181	100	0.56
05	CPM050M2	40.00	1.575	70	0.66
06	CPM060M2	50.00	1.969	70	0.79
07	CPM070M2	60.00	2.362	50	0.66
08	CPM080M2	70.00	2.756	50	0.75
09	CPM090M2	80.00	3.150	50	0.84
10	CPM100M2	90.00	3.543	35	0.66
11	CPM110M2	100.00	3.937	35	0.72
12	CPM120M2	110.00	4.331	35	0.79
13	CPM130M2	120.00	4.724	25	0.61



CPM_0M5 Straight, Modular Male
5.08 mm / .200" Pitch Weight per pole: 0.68 g

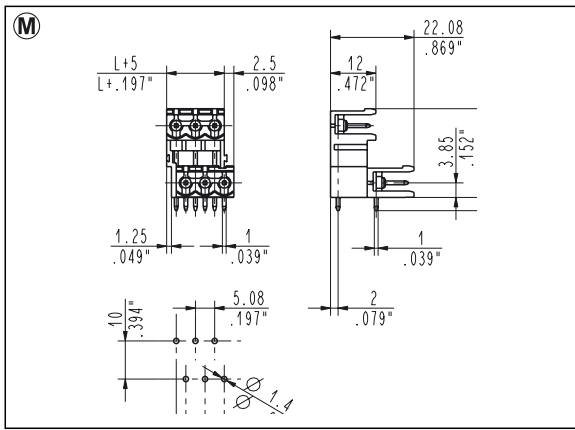
Poles	STD Code	L [mm]	L [inch]	Pcs/pack.	W [kg]
02	CPM020M5	5.08	0.200	250	0.68
03	CPM030M5	10.16	0.400	200	0.81

More poles are obtainable by combining modular connectors of 2 and 3 poles



CPM_0M6 Straight, Modular Male
10.16 mm / .400" Pitch Weight per pole: 0.94 g

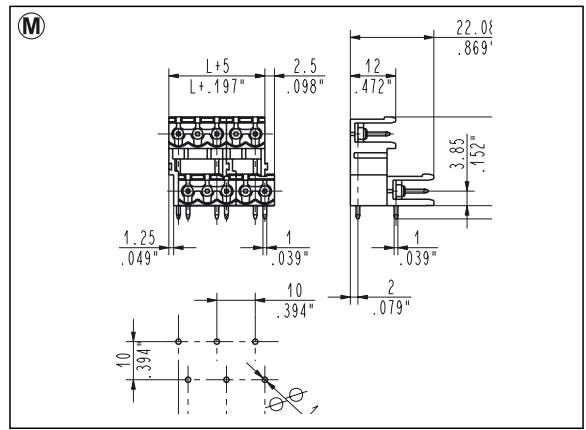
Poles	STD Code	L [mm]	L [inch]	Pcs/pack.	W [kg]
02	CPM020M6	10.16	0.400	175	0.75
03	CPM030M6	20.32	0.800	140	0.70
04	CPM040M6	30.48	1.200	100	0.56
05	CPM050M6	40.64	1.600	70	0.66
06	CPM060M6	50.80	2.000	70	0.79
07	CPM070M6	60.96	2.400	50	0.66
08	CPM080M6	71.12	2.800	50	0.75
09	CPM090M6	81.28	3.200	50	0.84
10	CPM100M6	91.44	3.600	35	0.66
11	CPM110M6	101.60	4.000	35	0.72
12	CPM120M6	111.76	4.400	35	0.79
13	CPM130M6	121.92	4.800	25	0.61



CPM_9M1 90°, Modular Male
5 mm / .197" Pitch Weight per pole: 0.68 g

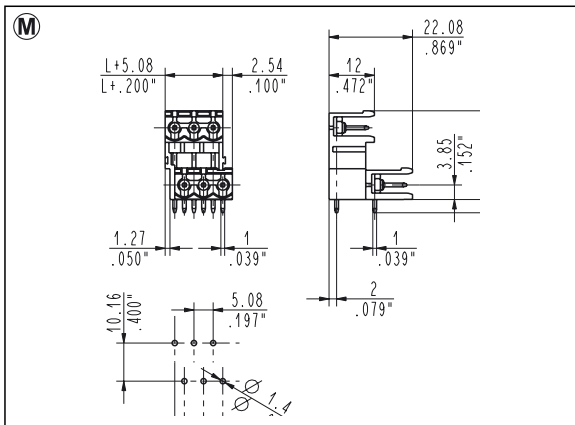
Poles	STD Code	L [mm]	L [inch]	Pcs/pack.	W [kg]
02	CPM029M1	5.00	0.197	250	0.68
03	CPM039M1	10.00	0.394	200	0.81

More poles are obtainable by combining modular connectors of 2 and 3 poles



CPM_9M2 90°, Modular Male
10 mm / .394" Pitch Weight per pole: 0.94 g

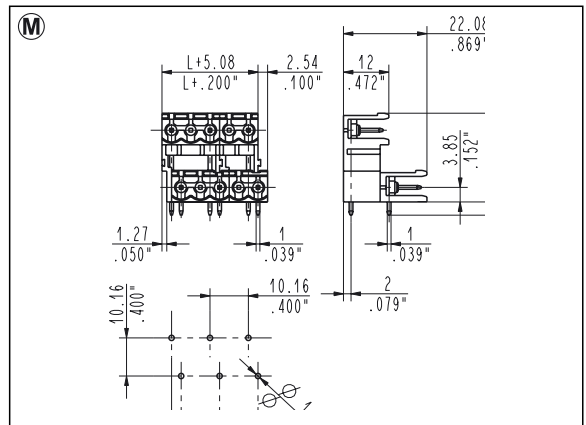
Poles	STD Code	L [mm]	L [inch]	Pcs/pack.	W [kg]
02	CPM029M2	10.00	0.394	175	0.75
03	CPM039M2	20.00	0.787	140	0.70
04	CPM049M2	30.00	1.181	100	0.56
05	CPM059M2	40.00	1.575	70	0.66
06	CPM069M2	50.00	1.969	70	0.79
07	CPM079M2	60.00	2.362	50	0.66
08	CPM089M2	70.00	2.756	50	0.75
09	CPM099M2	80.00	3.150	50	0.84
10	CPM109M2	90.00	3.543	35	0.66
11	CPM119M2	100.00	3.937	35	0.72
12	CPM129M2	110.00	4.331	35	0.79
13	CPM139M2	120.00	4.724	25	0.61



CPM_9M5 90°, Modular Male
5.08 mm / .200" Pitch Weight per pole: 0.68 g

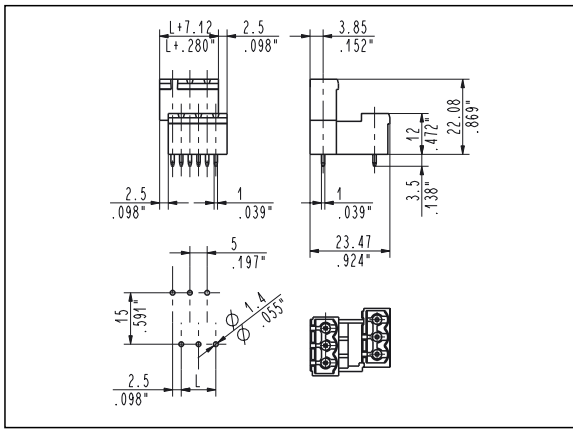
Poles	STD Code	L [mm]	L [inch]	Pcs/pack.	W [kg]
02	CPM029M5	5.08	0.200	250	0.68
03	CPM039M5	10.16	0.400	200	0.81

More poles are obtainable by combining modular connectors of 2 and 3 poles



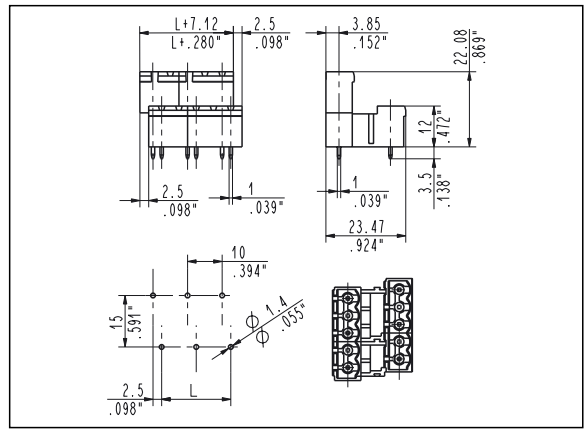
CPM_9M6 90°, Modular Male
10.16 mm / .400" Pitch Weight per pole: 0.94 g

Poles	STD Code	L [mm]	L [inch]	Pcs/pack.	W [kg]
02	CPM029M6	10.16	0.400	175	0.75
03	CPM039M6	20.32	0.800	140	0.70
04	CPM049M6	30.48	1.200	100	0.56
05	CPM059M6	40.64	1.600	70	0.66
06	CPM069M6	50.80	2.000	70	0.79
07	CPM079M6	60.96	2.400	50	0.66
08	CPM089M6	71.12	2.800	50	0.75
09	CPM099M6	81.28	3.200	50	0.84
10	CPM109M6	91.44	3.600	35	0.66
11	CPM119M6	101.60	4.000	35	0.72
12	CPM129M6	111.76	4.400	35	0.79
13	CPM139M6	121.92	4.800	25	0.61



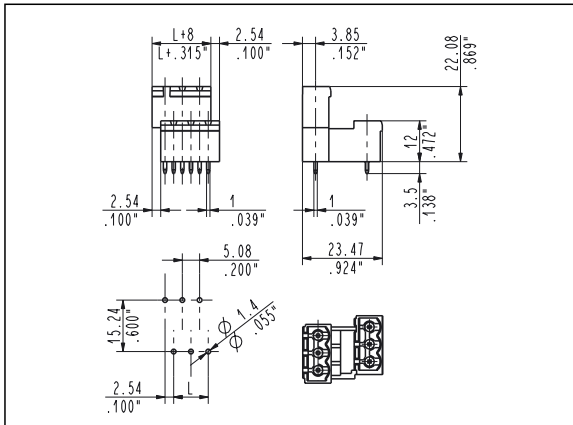
CPM_0P1 Straight, Polarized Male
5 mm / .197" Pitch Weight per pole: 0.78 g

Poles	STD Code	L [mm]	L [inch]	Pcs/pack.	W [kg]
02	CPM020P1	5.00	0.197	250	0.78
03	CPM030P1	10.00	0.394	200	0.94
04	CPM040P1	15.00	0.591	175	0.94
05	CPM050P1	20.00	0.787	140	0.98
06	CPM060P1	25.00	0.984	140	0.94
07	CPM070P1	30.00	1.181	100	0.82
08	CPM080P1	35.00	1.378	100	0.94
09	CPM090P1	40.00	1.575	70	0.98
10	CPM100P1	45.00	1.772	70	1.09
11	CPM110P1	50.00	1.969	70	1.20
12	CPM120P1	55.00	2.165	50	0.94
13	CPM130P1	60.00	2.362	50	1.01
14	CPM140P1	65.00	2.559	50	1.09
15	CPM150P1	70.00	2.756	50	1.17
16	CPM160P1	75.00	2.953	50	1.25
17	CPM170P1	80.00	3.150	50	1.33
18	CPM180P1	85.00	3.346	35	0.98
19	CPM190P1	90.00	3.543	35	1.04
20	CPM200P1	95.00	3.740	35	1.09
21	CPM210P1	100.00	3.937	35	1.15
22	CPM220P1	105.00	4.134	35	1.20
23	CPM230P1	110.00	4.331	35	1.26
24	CPM240P1	115.00	4.528	35	1.31
25	CPM250P1	120.00	4.724	25	0.98



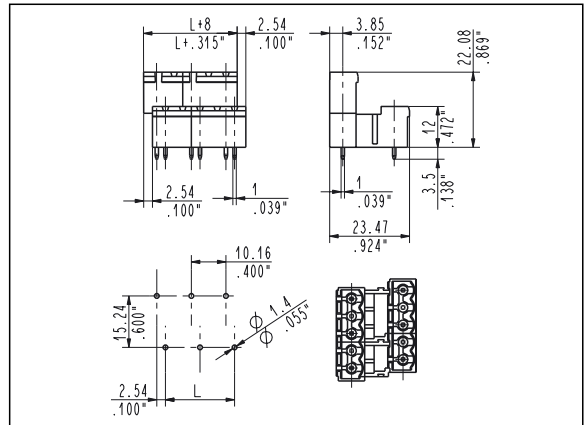
CPM_0P2 Straight, Polarized Male
10 mm / .394" Pitch Weight per pole: 1.04 g

Poles	STD Code	L [mm]	L [inch]	Pcs/pack.	W [kg]
02	CPM020P2	10.00	0.394	175	0.83
03	CPM030P2	20.00	0.787	140	0.78
04	CPM040P2	30.00	1.181	100	0.62
05	CPM050P2	40.00	1.575	70	0.73
06	CPM060P2	50.00	1.969	70	0.87
07	CPM070P2	60.00	2.362	50	0.73
08	CPM080P2	70.00	2.756	50	0.83
09	CPM090P2	80.00	3.150	50	0.94
10	CPM100P2	90.00	3.543	35	0.73
11	CPM110P2	100.00	3.937	35	0.80
12	CPM120P2	110.00	4.331	35	0.87
13	CPM130P2	120.00	4.724	25	0.68



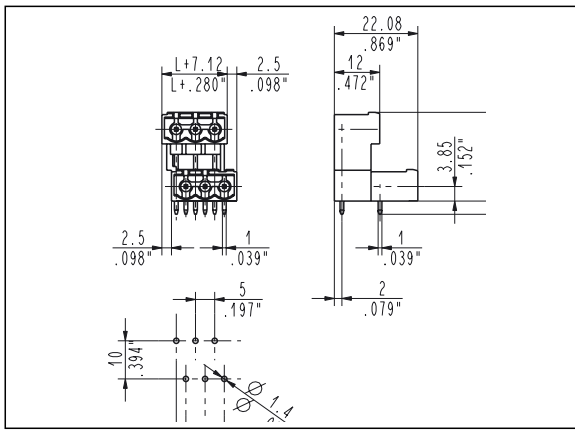
CPM_0P5 Straight, Polarized Male
5.08 mm / .200" Pitch Weight per pole: 0.78 g

Poles	STD Code	L [mm]	L [inch]	Pcs/pack.	W [kg]
02	CPM020P5	5.08	0.200	250	0.78
03	CPM030P5	10.16	0.400	200	0.94
04	CPM040P5	15.24	0.600	175	0.94
05	CPM050P5	20.32	0.800	140	0.98
06	CPM060P5	25.40	1.000	140	0.94
07	CPM070P5	30.48	1.200	100	0.82
08	CPM080P5	35.56	1.400	100	0.94
09	CPM090P5	40.64	1.600	70	0.98
10	CPM100P5	45.72	1.800	70	1.09
11	CPM110P5	50.80	2.000	70	1.20
12	CPM120P5	55.88	2.200	50	0.94
13	CPM130P5	60.96	2.400	50	1.01
14	CPM140P5	66.04	2.600	50	1.09
15	CPM150P5	71.12	2.800	50	1.17
16	CPM160P5	76.20	3.000	50	1.25
17	CPM170P5	81.28	3.200	50	1.33
18	CPM180P5	86.36	3.400	35	0.98
19	CPM190P5	91.44	3.600	35	1.04
20	CPM200P5	96.52	3.800	35	1.09
21	CPM210P5	101.60	4.000	35	1.15
22	CPM220P5	106.68	4.200	35	1.20
23	CPM230P5	111.76	4.400	35	1.26
24	CPM240P5	116.84	4.600	35	1.31
25	CPM250P5	121.92	4.800	25	0.98



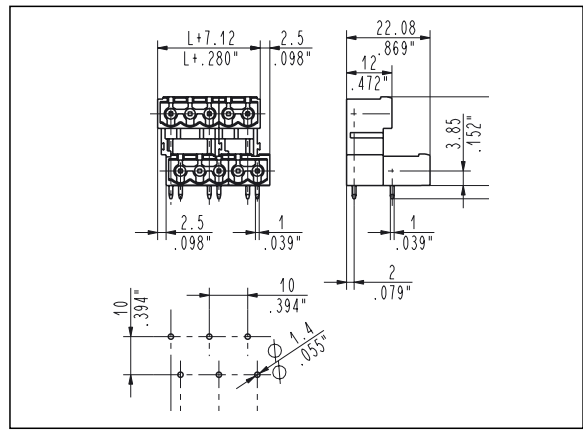
CPM_0P6 Straight, Polarized Male
10.16 mm / .400" Pitch Weight per pole: 1.04 g

Poles	STD Code	L [mm]	L [inch]	Pcs/pack.	W [kg]
02	CPM020P6	10.16	0.400	175	0.83
03	CPM030P6	20.32	0.800	140	0.78
04	CPM040P6	30.48	1.200	100	0.62
05	CPM050P6	40.64	1.600	70	0.73
06	CPM060P6	50.80	2.000	70	0.87
07	CPM070P6	60.96	2.400	50	0.73
08	CPM080P6	71.12	2.800	50	0.83
09	CPM090P6	81.28	3.200	50	0.94
10	CPM100P6	91.44	3.600	35	0.73
11	CPM110P6	101.60	4.000	35	0.80
12	CPM120P6	111.76	4.400	35	0.87
13	CPM130P6	121.92	4.800	25	0.68



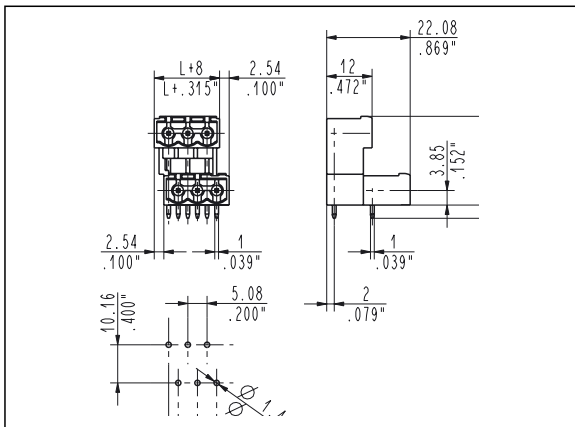
CPM_9P1 90°, Polarized Male
5 mm / .197" Pitch Weight per pole: 0.78 g

Poles	STD Code	L [mm]	L [inch]	Pcs/pack.	W [kg]
02	CPM029P1	5.00	0.197	250	0.78
03	CPM039P1	10.00	0.394	200	0.94
04	CPM049P1	15.00	0.591	175	0.94
05	CPM059P1	20.00	0.787	140	0.98
06	CPM069P1	25.00	0.984	100	0.94
07	CPM079P1	30.00	1.181	100	0.82
08	CPM089P1	35.00	1.378	100	0.94
09	CPM099P1	40.00	1.575	70	0.98
10	CPM109P1	45.00	1.772	70	1.09
11	CPM119P1	50.00	1.969	70	1.20
12	CPM129P1	55.00	2.165	50	0.94
13	CPM139P1	60.00	2.362	50	1.01
14	CPM149P1	65.00	2.559	50	1.09
15	CPM159P1	70.00	2.756	50	1.17
16	CPM169P1	75.00	2.953	50	1.25
17	CPM179P1	80.00	3.150	50	1.33
18	CPM189P1	85.00	3.346	35	0.98
19	CPM199P1	90.00	3.543	35	1.04
20	CPM209P1	95.00	3.740	35	1.09
21	CPM219P1	100.00	3.937	35	1.15
22	CPM229P1	105.00	4.134	35	1.20
23	CPM239P1	110.00	4.331	35	1.26
24	CPM249P1	115.00	4.528	35	1.31
25	CPM259P1	120.00	4.724	25	0.98



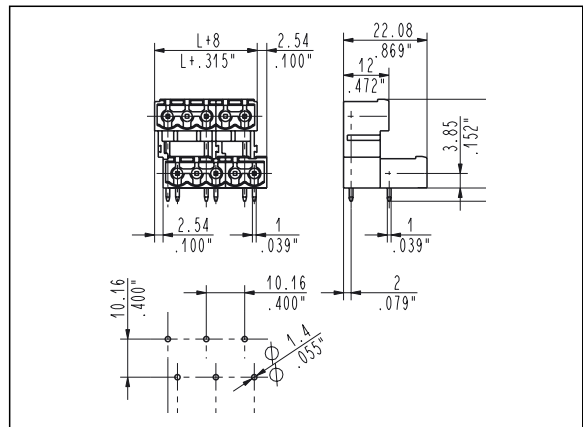
CPM_9P2 90°, Polarized Male
10 mm / .394" Pitch Weight per pole: 1.04 g

Poles	STD Code	L [mm]	L [inch]	Pcs/pack.	W [kg]
02	CPM029P2	10.00	0.394	175	0.83
03	CPM039P2	20.00	0.787	140	0.78
04	CPM049P2	30.00	1.181	100	0.62
05	CPM059P2	40.00	1.575	70	0.73
06	CPM069P2	50.00	1.969	70	0.87
07	CPM079P2	60.00	2.362	50	0.73
08	CPM089P2	70.00	2.756	50	0.83
09	CPM099P2	80.00	3.150	50	0.94
10	CPM109P2	90.00	3.543	35	0.73
11	CPM119P2	100.00	3.937	35	0.80
12	CPM129P2	110.00	4.331	35	0.87
13	CPM139P2	120.00	4.724	25	0.68



CPM_9P5 90°, Polarized Male
5.08 mm / .200" Pitch Weight per pole: 0.78 g

Poles	STD Code	L [mm]	L [inch]	Pcs/pack.	W [kg]
02	CPM029P5	5.08	0.200	250	0.78
03	CPM039P5	10.16	0.400	200	0.94
04	CPM049P5	15.24	0.600	175	0.94
05	CPM059P5	20.32	0.800	140	0.98
06	CPM069P5	25.40	1.000	100	0.94
07	CPM079P5	30.48	1.200	100	0.82
08	CPM089P5	35.56	1.400	100	0.94
09	CPM099P5	40.64	1.600	70	0.98
10	CPM109P5	45.72	1.800	70	1.09
11	CPM119P5	50.80	2.000	70	1.20
12	CPM129P5	55.88	2.200	50	0.94
13	CPM139P5	60.96	2.400	50	1.01
14	CPM149P5	66.04	2.600	50	1.09
15	CPM159P5	71.12	2.800	50	1.17
16	CPM169P5	76.20	3.000	50	1.25
17	CPM179P5	81.28	3.200	50	1.33
18	CPM189P5	86.36	3.400	35	0.98
19	CPM199P5	91.44	3.600	35	1.04
20	CPM209P5	96.52	3.800	35	1.09
21	CPM219P5	101.60	4.000	35	1.15
22	CPM229P5	106.68	4.200	35	1.20
23	CPM239P5	111.76	4.400	35	1.26
24	CPM249P5	116.84	4.600	35	1.31
25	CPM259P5	121.92	4.800	25	0.98



CPM_9P6 90°, Polarized Male
10.16 mm / .400" Pitch Weight per pole: 1.04 g

Poles	STD Code	L [mm]	L [inch]	Pcs/pack.	W [kg]
02	CPM029P6	10.16	0.400	175	0.83
03	CPM039P6	20.32	0.800	140	0.78
04	CPM049P6	30.48	1.200	100	0.62
05	CPM059P6	40.64	1.600	70	0.73
06	CPM069P6	50.80	2.000	70	0.87
07	CPM079P6	60.96	2.400	50	0.73
08	CPM089P6	71.12	2.800	50	0.83
09	CPM099P6	81.28	3.200	50	0.94
10	CPM109P6	91.44	3.600	35	0.73
11	CPM119P6	101.60	4.000	35	0.80
12	CPM129P6	111.76	4.400	35	0.87
13	CPM139P6	121.92	4.800	25	0.68

CONNECTORS

SAURO
WWW.SAURO.NET