

Mechanical Characteristics

Insertion force per pole:	max. .450 lb (max. 2 N)
Withdrawal force per pole:	min. .270 lb (min. 1.2 N)
Recommended tightening torque:	0.67 Nm (UL)*
PCB thickness:	max. .094 in (max. 2.4 mm)
PCB hole diameter:	min. .055 in (min. 1.4 mm)
Stripping length:	.16 ÷ .24 in (4 ÷ 6 mm)
Operating temperature range:	-40 °F ÷ +230 °F (-40 °C ÷ +110 °C)
Climatic category:	40/110/21 According to IEC 68-1

Electrical Characteristics

Solid wire section:	30÷14 AWG - 0.05÷2.5 mm ² (UL, CSA)*
Stranded wire section:	30÷14 AWG - 0.05÷1.5 mm ² (UL, CSA)*
Rated voltage:	.197 in (5 mm) pitch 300 V (UL, CSA)* .394 in (10 mm) pitch 750 V (IMQ)*
Rated current:	15 A (IMQ)*
Contact resistance:	<15 mΩ
Insulation resistance:	>10 ⁹ Ω (500V DC)

*All the a.m. data refer to the highest values amongst the certificated ones (). **V** voltage, **I** current values and tightening torque are related to the norms to be applied to the product and to its use.

Caratteristiche Meccaniche

Forza di inserzione per contatto:	max. 2 N
Forza di disinserzione per contatto:	min. 1,2 N
Coppia di serraggio consigliata:	0,67 Nm (UL)*
Spessore circuito stampato:	max. 2,4 mm
Diametro fori circuito stampato:	min. 1,4 mm
Lunghezza di spellatura:	4 ÷ 6 mm
Temperature di funzionamento:	-40 °C ÷ +110 °C
Categoria climatica:	40/110/21 Secondo IEC 68-1

Caratteristiche Elettriche

Conduttore connettabile rigido:	0,05÷2,5 mm ² - 30÷14 AWG (UL, CSA)*
Conduttore connettabile flessibile:	0,05÷1,5 mm ² - 30÷14 AWG (UL, CSA)*
Tensione nominale:	passo 5 mm 300 V (UL, CSA)* passo 10 mm 750 V (IMQ)*
Corrente nominale:	15 A (IMQ)*
Resistenza di contatto:	<15 mΩ
Resistenza di isolamento:	>10 ⁹ Ω (500V CC)

*Per ogni caratteristica, i dati riportati si riferiscono ai massimi valori fra quelli certificati (). I valori di tensione **V** corrente **I** e, coppia di serraggio sono legati alle norme applicabili al prodotto ed al tipo di utilizzo.

Approvals

(see also "Certifications", page 22)

VDE: **Reg. N. 124817 ÜG**
250 V - 12 A - T 100 - 1.5 mm² for 5 mm pitch (a)
(a) 250 V - 10 A - T 95 - 1.5 mm² for CSF__091
750 V - 12 A - T 100 - 1.5 mm² for 10 mm pitch (b)
(b) 750 V - 10 A - T 95 - 1.5 mm² for CSF__092

IMQ: **Certificate with Surveillance IMQ CSv EE099**
ESS: 250 V - T 110 - 15 A - 2.5 mm² solid (12 A - 1.5 mm² stranded) for 5 mm pitch (c)
(c) 250 V - T 110 - 13.5 A - 2.5 mm² solid (10 A - 1.5 mm² stranded) for CSF__091
750 V - T 110 - 15 A - 2.5 mm² solid (12 A - 1.5 mm² stranded) for 10 mm pitch (d)
(d) 750 V - T 110 - 13.5 A - 2.5 mm² solid (10 A - 1.5 mm² stranded) for CSF__092

CSA: **File LR 102896-2**
300 V - 12 A - 30÷14 AWG for 5 mm pitch (e)
(e) 300 V - 10 A - 30÷14 AWG for CSF__091
600 V - 12 A - 30÷14 AWG for 10 mm pitch (f)
(f) 600 V - 10 A - 30÷14 AWG for CSF__092

UL: **File E 167473**
300 V - 12 A - 30÷14 AWG for 5 mm pitch (g)
(g) 300 V - 10 A - 30÷14 AWG for CSF__091
600 V - 12 A - 30÷14 AWG for 10 mm pitch (h)
(h) 600 V - 10 A - 30÷14 AWG for CSF__092
Application values for end-use equipment have to be in accordance to UL norms and applicable to it.

Certificazioni

(vedi anche "Certificazioni", pag. 22)

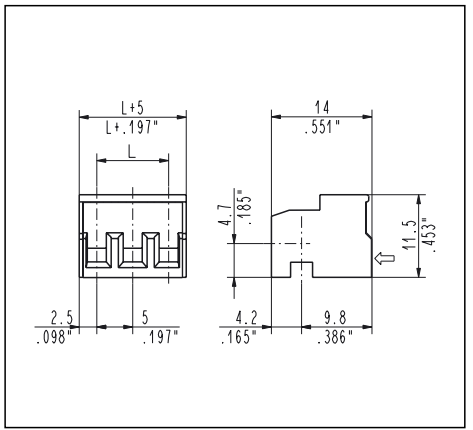
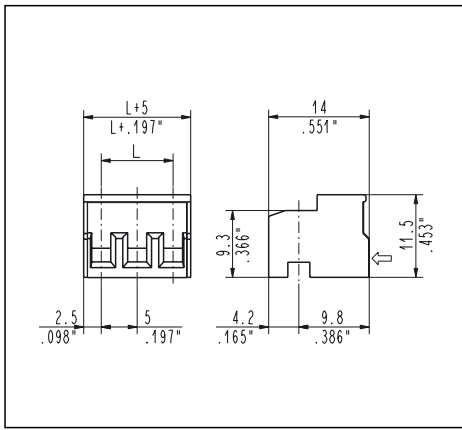
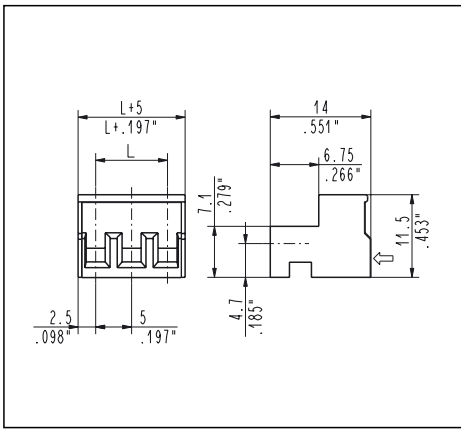


VDE: **Reg. N. 124817 ÜG**
250 V - 12 A - T 100 - 1.5 mm² per passo 5 mm (a)
(a) 250 V - 10 A - T 95 - 1.5 mm² per CSF__091
750 V - 12 A - T 100 - 1.5 mm² per passo 10 mm (b)
(b) 750 V - 10 A - T 95 - 1.5 mm² per CSF__092

IMQ: **Certificato con Sorveglianza IMQ CSv EE099**
ESS: 250 V - T 110 - 15 A - 2.5 mm² rigido (12 A - 1.5 mm² flessibile) per passo 5 mm (c)
(c) 250 V - T 110 - 13.5 A - 2.5 mm² rigido (10 A - 1.5 mm² flessibile) per CSF__091
750 V - T 110 - 15 A - 2.5 mm² rigido (12 A - 1.5 mm² flessibile) per passo 10 mm (d)
(d) 750 V - T 110 - 13.5 A - 2.5 mm² rigido (10 A - 1.5 mm² flessibile) per CSF__092

CSA: **File LR 102896-2**
300 V - 12 A - 30÷14 AWG per passo 5 mm (e)
(e) 300 V - 10 A - 30÷14 AWG per CSF__091
600 V - 12 A - 30÷14 AWG per passo 10 mm (f)
(f) 600 V - 10 A - 30÷14 AWG per CSF__092

UL: **File E 167473**
300 V - 12 A - 30÷14 AWG per passo 5 mm (g)
(g) 300 V - 10 A - 30÷14 AWG per CSF__091
600 V - 12 A - 30÷14 AWG per passo 10 mm (h)
(h) 600 V - 10 A - 30÷14 AWG per CSF__092
I valori di utilizzo per l'apparecchiatura finale devono essere conformi alle norme UL ad essa applicabili.



CSF_011 Straight, Female
5 mm / .197" Pitch Weight per pole: 1.21 g

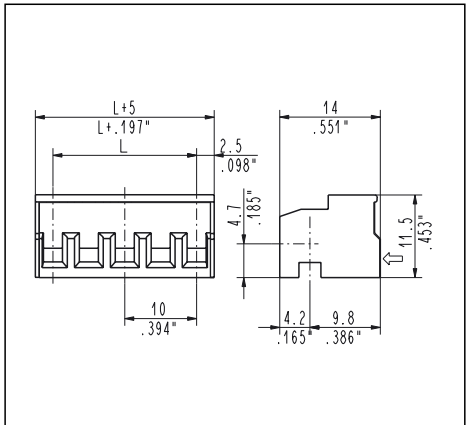
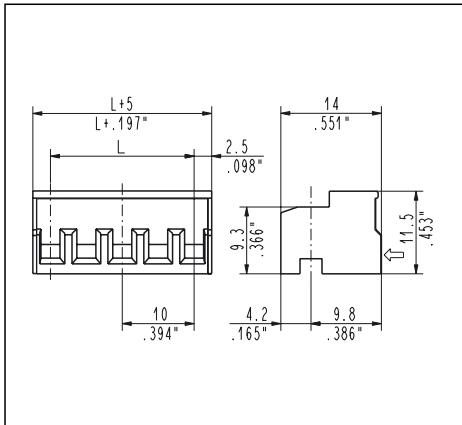
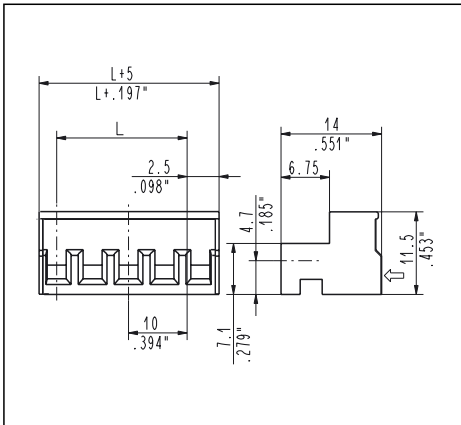
Poles	STD Code	L [mm]	L [inch]	Pcs/pack.	W [kg]
02	CSF02011	5.00	0.197	450	1.09
03	CSF03011	10.00	0.394	300	1.09
04	CSF04011	15.00	0.591	225	1.09
05	CSF05011	20.00	0.787	175	1.06
06	CSF06011	25.00	0.984	150	1.09
07	CSF07011	30.00	1.181	125	1.06
08	CSF08011	35.00	1.378	100	0.97
09	CSF09011	40.00	1.575	100	1.09
10	CSF10011	45.00	1.772	75	0.90
11	CSF11011	50.00	1.969	75	1.00
12	CSF12011	55.00	2.165	75	1.09
13	CSF13011	60.00	2.362	50	0.78
14	CSF14011	65.00	2.559	50	0.84
15	CSF15011	70.00	2.756	50	0.90
16	CSF16011	75.00	2.953	50	0.97
17	CSF17011	80.00	3.150	50	1.03
18	CSF18011	85.00	3.346	50	1.09
19	CSF19011	90.00	3.543	50	1.15
20	CSF20011	95.00	3.740	50	1.21
21	CSF21011	100.00	3.937	50	1.27
22	CSF22011	105.00	4.134	50	1.33
23	CSF23011	110.00	4.331	50	1.39
24	CSF24011	115.00	4.528	50	1.45
25	CSF25011	120.00	4.724	50	1.51

CSF_091 90° - 270°, Female
5 mm / .197" Pitch Weight per pole: 1.21 g

Poles	STD Code	L [mm]	L [inch]	Pcs/pack.	W [kg]
02	CSF02091	5.00	0.197	450	1.09
03	CSF03091	10.00	0.394	300	1.09
04	CSF04091	15.00	0.591	225	1.09
05	CSF05091	20.00	0.787	175	1.06
06	CSF06091	25.00	0.984	150	1.09
07	CSF07091	30.00	1.181	125	1.06
08	CSF08091	35.00	1.378	100	0.97
09	CSF09091	40.00	1.575	100	1.09
10	CSF10091	45.00	1.772	75	0.90
11	CSF11091	50.00	1.969	75	1.00
12	CSF12091	55.00	2.165	75	1.09
13	CSF13091	60.00	2.362	50	0.78
14	CSF14091	65.00	2.559	50	0.84
15	CSF15091	70.00	2.756	50	0.90
16	CSF16091	75.00	2.953	50	0.97
17	CSF17091	80.00	3.150	50	1.03
18	CSF18091	85.00	3.346	50	1.09
19	CSF19091	90.00	3.543	50	1.15
20	CSF20091	95.00	3.740	50	1.21
21	CSF21091	100.00	3.937	50	1.27
22	CSF22091	105.00	4.134	50	1.33
23	CSF23091	110.00	4.331	50	1.39
24	CSF24091	115.00	4.528	50	1.45
25	CSF25091	120.00	4.724	50	1.51

CSF_001 Straight - 90° - 270°, Female
5 mm / .197" Pitch Weight per pole: 1.21 g

Poles	STD Code	L [mm]	L [inch]	Pcs/pack.	W [kg]
02	CSF02001	5.00	0.197	450	1.09
03	CSF03001	10.00	0.394	300	1.09
04	CSF04001	15.00	0.591	225	1.09
05	CSF05001	20.00	0.787	175	1.06
06	CSF06001	25.00	0.984	150	1.09
07	CSF07001	30.00	1.181	125	1.06
08	CSF08001	35.00	1.378	100	0.97
09	CSF09001	40.00	1.575	100	1.09
10	CSF10001	45.00	1.772	75	0.90
11	CSF11001	50.00	1.969	75	1.00
12	CSF12001	55.00	2.165	75	1.09
13	CSF13001	60.00	2.362	50	0.78
14	CSF14001	65.00	2.559	50	0.84
15	CSF15001	70.00	2.756	50	0.90
16	CSF16001	75.00	2.953	50	0.97
17	CSF17001	80.00	3.150	50	1.03
18	CSF18001	85.00	3.346	50	1.09
19	CSF19001	90.00	3.543	50	1.15
20	CSF20001	95.00	3.740	50	1.21
21	CSF21001	100.00	3.937	50	1.27
22	CSF22001	105.00	4.134	50	1.33
23	CSF23001	110.00	4.331	50	1.39
24	CSF24001	115.00	4.528	50	1.45
25	CSF25001	120.00	4.724	50	1.51



CSF_012 Straight, Female
10 mm / .195" Pitch Weight per pole: 1.53 g

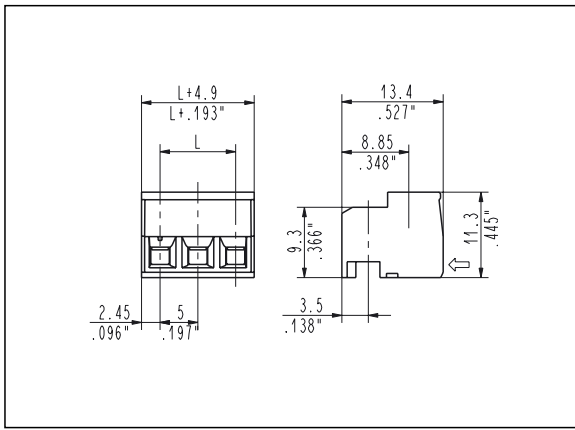
Poles	STD Code	L [mm]	L [inch]	Pcs/pack.	W [kg]
02	CSF02012	10.00	0.394	300	0.92
03	CSF03012	20.00	0.787	175	0.81
04	CSF04012	30.00	1.181	125	0.77
05	CSF05012	40.00	1.575	100	0.77
06	CSF06012	50.00	1.969	75	0.69
07	CSF07012	60.00	2.362	50	0.54
08	CSF08012	70.00	2.756	50	0.62
09	CSF09012	80.00	3.150	50	0.69
10	CSF10012	90.00	3.543	50	0.77
11	CSF11012	100.00	3.937	50	0.85
12	CSF12012	110.00	4.331	50	0.92
13	CSF13012	120.00	4.724	50	1.00

CSF_092 90° - 270°, Female
10 mm / .394" Pitch Weight per pole: 1.53 g

Poles	STD Code	L [mm]	L [inch]	Pcs/pack.	W [kg]
02	CSF02092	10.00	0.394	300	0.92
03	CSF03092	20.00	0.787	175	0.81
04	CSF04092	30.00	1.181	125	0.77
05	CSF05092	40.00	1.575	100	0.77
06	CSF06092	50.00	1.969	75	0.69
07	CSF07092	60.00	2.362	50	0.54
08	CSF08092	70.00	2.756	50	0.62
09	CSF09092	80.00	3.150	50	0.69
10	CSF10092	90.00	3.543	50	0.77
11	CSF11092	100.00	3.937	50	0.85
12	CSF12092	110.00	4.331	50	0.92
13	CSF13092	120.00	4.724	50	1.00

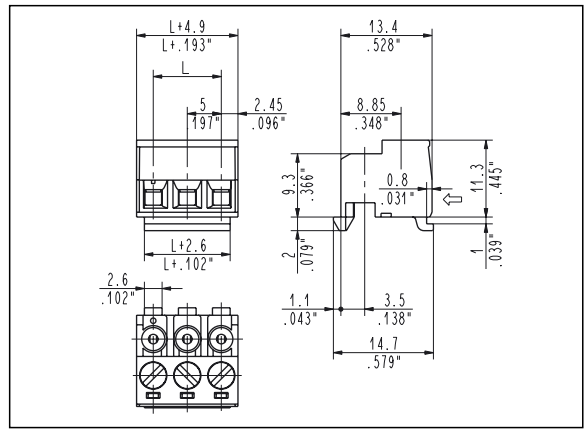
CSF_002 Straight - 90° - 270°, Female
10 mm / .394" Pitch Weight per pole: 1.53 g

Poles	STD Code	L [mm]	L [inch]	Pcs/pack.	W [kg]
02	CSF02002	10.00	0.394	300	0.92
03	CSF03002	20.00	0.787	175	0.81
04	CSF04002	30.00	1.181	125	0.77
05	CSF05002	40.00	1.575	100	0.77
06	CSF06002	50.00	1.969	75	0.69
07	CSF07002	60.00	2.362	50	0.54
08	CSF08002	70.00	2.756	50	0.62
09	CSF09002	80.00	3.150	50	0.69
10	CSF10002	90.00	3.543	50	0.77
11	CSF11002	100.00	3.937	50	0.85
12	CSF12002	110.00	4.331	50	0.92
13	CSF13002	120.00	4.724	50	1.00



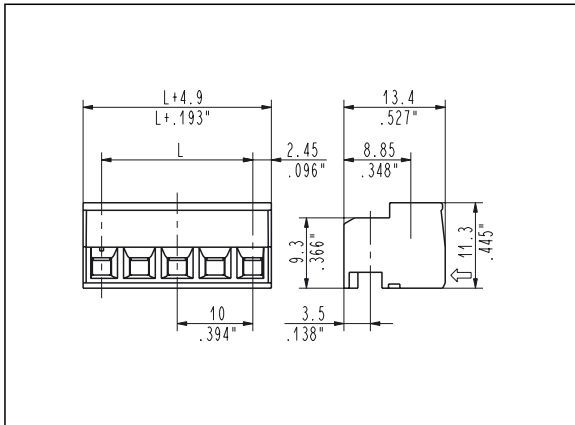
CSF_0J1 90°-270°, SAFE Female
5 mm / .197" Pitch Weight per pole: 1.20 g

Poles	STD Code	L [mm]	L [inch]	Pcs/pack.	W [kg]
02	CSF020J1	5.00	0.197	450	1.08
03	CSF030J1	10.00	0.394	300	1.08
04	CSF040J1	15.00	0.591	225	1.08
05	CSF050J1	20.00	0.787	175	1.05
06	CSF060J1	25.00	0.984	150	1.08
07	CSF070J1	30.00	1.181	125	1.05
08	CSF080J1	35.00	1.378	100	0.96
09	CSF090J1	40.00	1.575	100	1.08
10	CSF100J1	45.00	1.772	75	0.90
11	CSF110J1	50.00	1.969	75	0.99
12	CSF120J1	55.00	2.165	75	1.08
13	CSF130J1	60.00	2.362	50	0.78
14	CSF140J1	65.00	2.559	50	0.90
15	CSF150J1	70.00	2.756	50	0.90
16	CSF160J1	75.00	2.953	50	0.96
17	CSF170J1	80.00	3.150	50	1.02
18	CSF180J1	85.00	3.346	50	1.08
19	CSF190J1	90.00	3.543	50	1.14
20	CSF200J1	95.00	3.740	50	1.20
21	CSF210J1	100.00	3.937	50	1.26
22	CSF220J1	105.00	4.134	50	1.32
23	CSF230J1	110.00	4.331	50	1.38
24	CSF240J1	115.00	4.528	50	1.44
25	CSF250J1	120.00	4.724	50	1.50



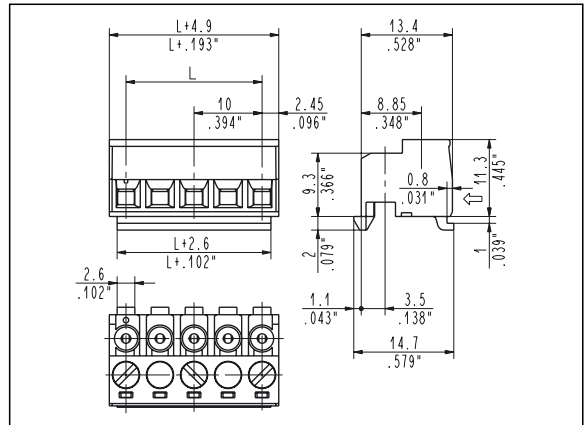
CSF_0S1 90°-270°, SAFE Female with Snap Features
5 mm / .197" Pitch Weight per pole: 1.22 g

Poles	STD Code	L [mm]	L [inch]	Pcs/pack.	W [kg]
02	CSF020S1	5.00	0.197	450	1.10
03	CSF030S1	10.00	0.394	300	1.10
04	CSF040S1	15.00	0.591	225	1.10
05	CSF050S1	20.00	0.787	175	1.07
06	CSF060S1	25.00	0.984	150	1.10
07	CSF070S1	30.00	1.181	125	1.07
08	CSF080S1	35.00	1.378	100	0.98
09	CSF090S1	40.00	1.575	100	1.10
10	CSF100S1	45.00	1.772	75	0.92
11	CSF110S1	50.00	1.969	75	1.01
12	CSF120S1	55.00	2.165	75	1.10
13	CSF130S1	60.00	1.969	50	0.80
14	CSF140S1	65.00	2.165	50	0.92
15	CSF150S1	70.00	1.969	50	0.92
16	CSF160S1	75.00	2.165	50	0.98
17	CSF170S1	80.00	1.969	50	1.04
18	CSF180S1	85.00	2.165	50	1.10
19	CSF190S1	90.00	1.969	50	1.16
20	CSF200S1	95.00	2.165	50	1.22
21	CSF210S1	100.00	1.969	50	1.28
22	CSF220S1	105.00	2.165	50	1.34
23	CSF230S1	110.00	1.969	50	1.40
24	CSF240S1	115.00	2.165	50	1.46
25	CSF250S1	120.00	1.969	50	1.52



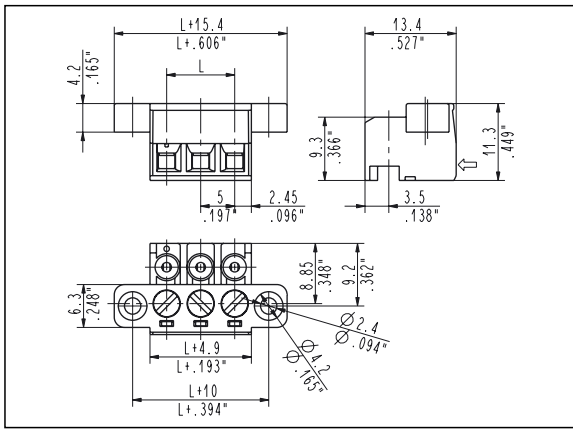
CSF_0J2 90°-270°, SAFE Female
10 mm / .195" Pitch Weight per pole: 1.52 g

Poles	STD Code	L [mm]	L [inch]	Pcs/pack.	W [kg]
02	CSF020J2	10.00	0.394	300	0.91
03	CSF030J2	20.00	0.787	175	0.80
04	CSF040J2	30.00	1.181	125	0.76
05	CSF050J2	40.00	1.575	100	0.76
06	CSF060J2	50.00	1.969	75	0.68
07	CSF070J2	60.00	2.362	50	0.53
08	CSF080J2	70.00	2.756	50	0.61
09	CSF090J2	80.00	3.150	50	0.68
10	CSF100J2	90.00	3.543	50	0.76
11	CSF110J2	100.00	3.937	50	0.84
12	CSF120J2	110.00	4.331	50	0.91
13	CSF130J2	120.00	4.724	50	1.00



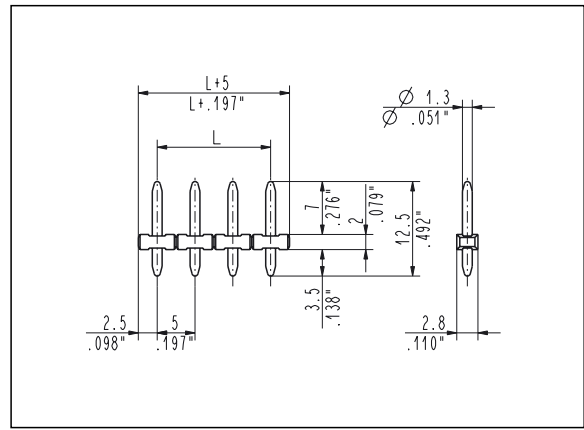
CSF_0S2 90°-270°, SAFE Female with Snap Features
10 mm / .394" Pitch Weight per pole: 1.57 g

Poles	STD Code	L [mm]	L [inch]	Pcs/pack.	W [kg]
02	CSF020S2	10.00	0.394	300	0.94
03	CSF030S2	20.00	0.787	175	0.82
04	CSF040S2	30.00	1.181	125	0.78
05	CSF050S2	40.00	1.575	100	0.78
06	CSF060S2	50.00	1.969	75	0.70
07	CSF070S2	60.00	2.362	50	0.55
08	CSF080S2	70.00	2.756	50	0.63
09	CSF090S2	80.00	3.150	50	0.71
10	CSF100S2	90.00	3.543	50	0.79
11	CSF110S2	100.00	3.937	50	0.86
12	CSF120S2	110.00	4.331	50	0.94
13	CSF130S2	120.00	4.724	50	1.02



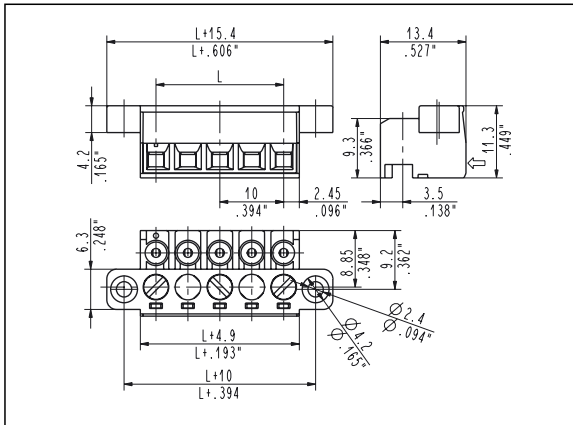
CSF_0F1 90°-270°, SAFE Female with High Flange
5 mm / .197" Pitch Weight per pole: 1.22 g

Poles	STD Code	L [mm]	L [inch]	Pcs/pack.	W [kg]
02	CSF020F1	5.00	0.197	225	0.55
03	CSF030F1	10.00	0.394	175	0.64
04	CSF040F1	15.00	0.591	150	0.74
05	CSF050F1	20.00	0.787	125	0.77
06	CSF060F1	25.00	0.984	100	0.74
07	CSF070F1	30.00	1.181	100	0.86
08	CSF080F1	35.00	1.378	75	0.74
09	CSF090F1	40.00	1.575	75	0.83
10	CSF100F1	45.00	1.772	75	0.92
11	CSF110F1	50.00	1.969	50	0.67
12	CSF120F1	55.00	2.165	50	0.74
13	CSF130F1	60.00	1.969	50	0.80
14	CSF140F1	65.00	2.165	50	0.92
15	CSF150F1	70.00	1.969	50	0.92
16	CSF160F1	75.00	2.165	50	0.98
17	CSF170F1	80.00	1.969	50	1.04
18	CSF180F1	85.00	2.165	50	1.10
19	CSF190F1	90.00	1.969	50	1.16
20	CSF200F1	95.00	2.165	50	1.22
21	CSF210F1	100.00	1.969	50	1.28
22	CSF220F1	105.00	2.165	50	1.34
23	CSF230F1	110.00	1.969	50	1.40
24	CSF240F1	115.00	2.165	50	1.46
25	CSF250F1	120.00	1.969	50	1.52



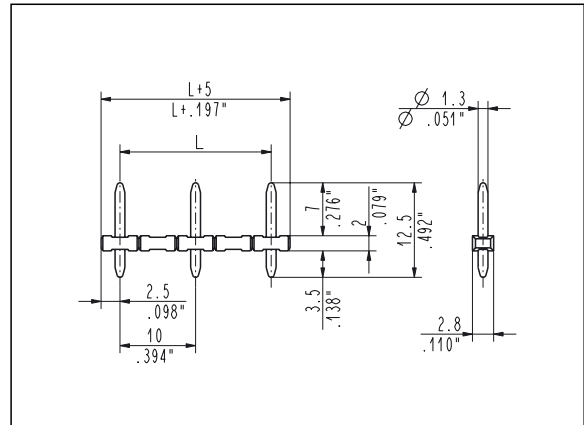
CSM_0A1 Straight, Side Stackable Male
5 mm / .197" Pitch Weight per pole: 0.17 g

Poles	STD Code	L [mm]	L [inch]	Pcs/pack.	W [kg]
02	CSM020A1	5.00	0.197	450	0.15
03	CSM030A1	10.00	0.394	300	0.15
04	CSM040A1	15.00	0.591	225	0.15
05	CSM050A1	20.00	0.787	175	0.15
06	CSM060A1	25.00	0.984	150	0.15
07	CSM070A1	30.00	1.181	125	0.15
08	CSM080A1	35.00	1.378	100	0.14
09	CSM090A1	40.00	1.575	100	0.15
10	CSM100A1	45.00	1.772	75	0.13
11	CSM110A1	50.00	1.969	75	0.14
12	CSM120A1	55.00	2.165	75	0.15
13	CSM130A1	60.00	2.362	50	0.11
14	CSM140A1	65.00	2.559	50	0.12
15	CSM150A1	70.00	2.756	50	0.13
16	CSM160A1	75.00	2.953	50	0.14
17	CSM170A1	80.00	3.150	50	0.15
18	CSM180A1	85.00	3.346	50	0.15
19	CSM190A1	90.00	3.543	50	0.16
20	CSM200A1	95.00	3.740	50	0.17
21	CSM210A1	100.00	3.937	50	0.18
22	CSM220A1	105.00	4.134	50	0.19
23	CSM230A1	110.00	4.331	50	0.20
24	CSM240A1	115.00	4.528	50	0.21
25	CSM250A1	120.00	4.724	50	0.21



CSF_0F2 90°-270°, SAFE Female with High Flange
10 mm / .394" Pitch Weight per pole: 1.56 g

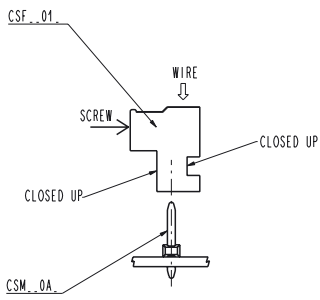
Poles	STD Code	L [mm]	L [inch]	Pcs/pack.	W [kg]
02	CSF020F2	10.00	0.394	125	0.39
03	CSF030F2	20.00	0.787	100	0.47
04	CSF040F2	30.00	1.181	75	0.47
05	CSF050F2	40.00	1.575	50	0.39
06	CSF060F2	50.00	1.969	50	0.47
07	CSF070F2	60.00	2.362	50	0.55
08	CSF080F2	70.00	2.756	50	0.63
09	CSF090F2	80.00	3.150	50	0.70
10	CSF100F2	90.00	3.543	50	0.78
11	CSF110F2	100.00	3.937	50	0.86
12	CSF120F2	110.00	4.331	50	0.94
13	CSF130F2	120.00	4.724	50	1.02



CSM_0A2 Straight, Side Stackable Male
10 mm / .394" Pitch Weight per pole: 0.18 g

Poles	STD Code	L [mm]	L [inch]	Pcs/pack.	W [kg]
02	CSM020A2	10.00	0.394	300	0.11
03	CSM030A2	20.00	0.787	175	0.10
04	CSM040A2	30.00	1.181	125	0.09
05	CSM050A2	40.00	1.575	100	0.09
06	CSM060A2	50.00	1.969	75	0.08
07	CSM070A2	60.00	2.362	50	0.07
08	CSM080A2	70.00	2.756	50	0.07
09	CSM090A2	80.00	3.150	50	0.08
10	CSM100A2	90.00	3.543	50	0.09
11	CSM110A2	100.00	3.937	50	0.10
12	CSM120A2	110.00	4.331	50	0.11
13	CSM130A2	120.00	4.724	50	0.12

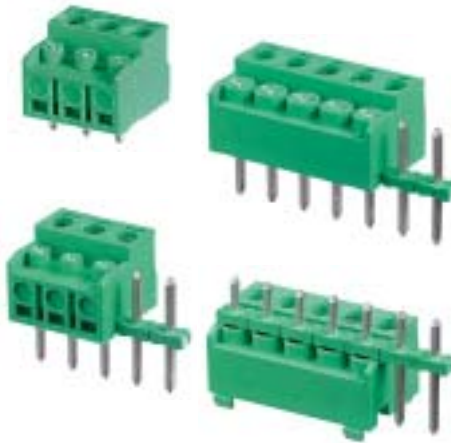
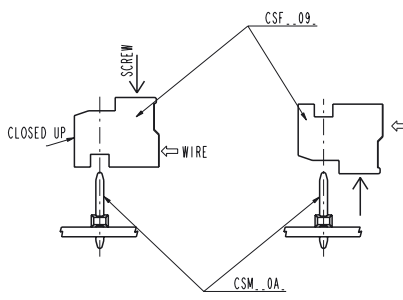
CSF__01_



Industrial Use

Specific for the Straight Insertion

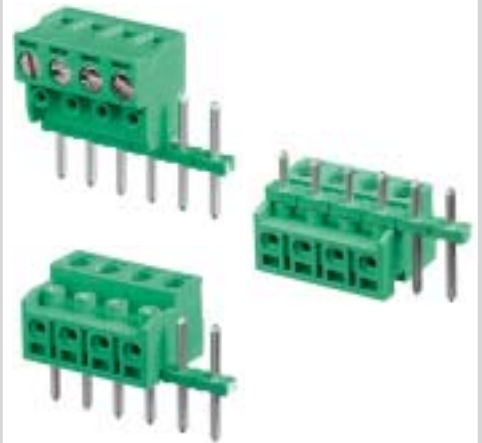
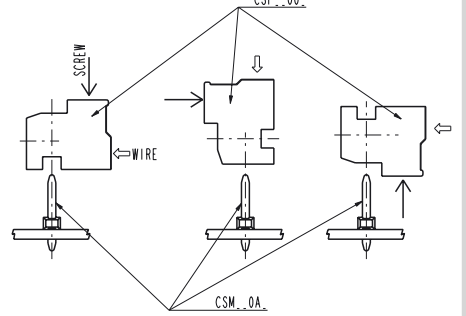
CSF__09_ ; CSF__0J_
CSF__0S_ ; CSF__0F_



Industrial Use

Specific for the 90° and 270° Insertion

CSF__00_



Versatile Use

For Prototypes and stock products



CONNECTORS

SAURO®
WWW.SAURO.NET