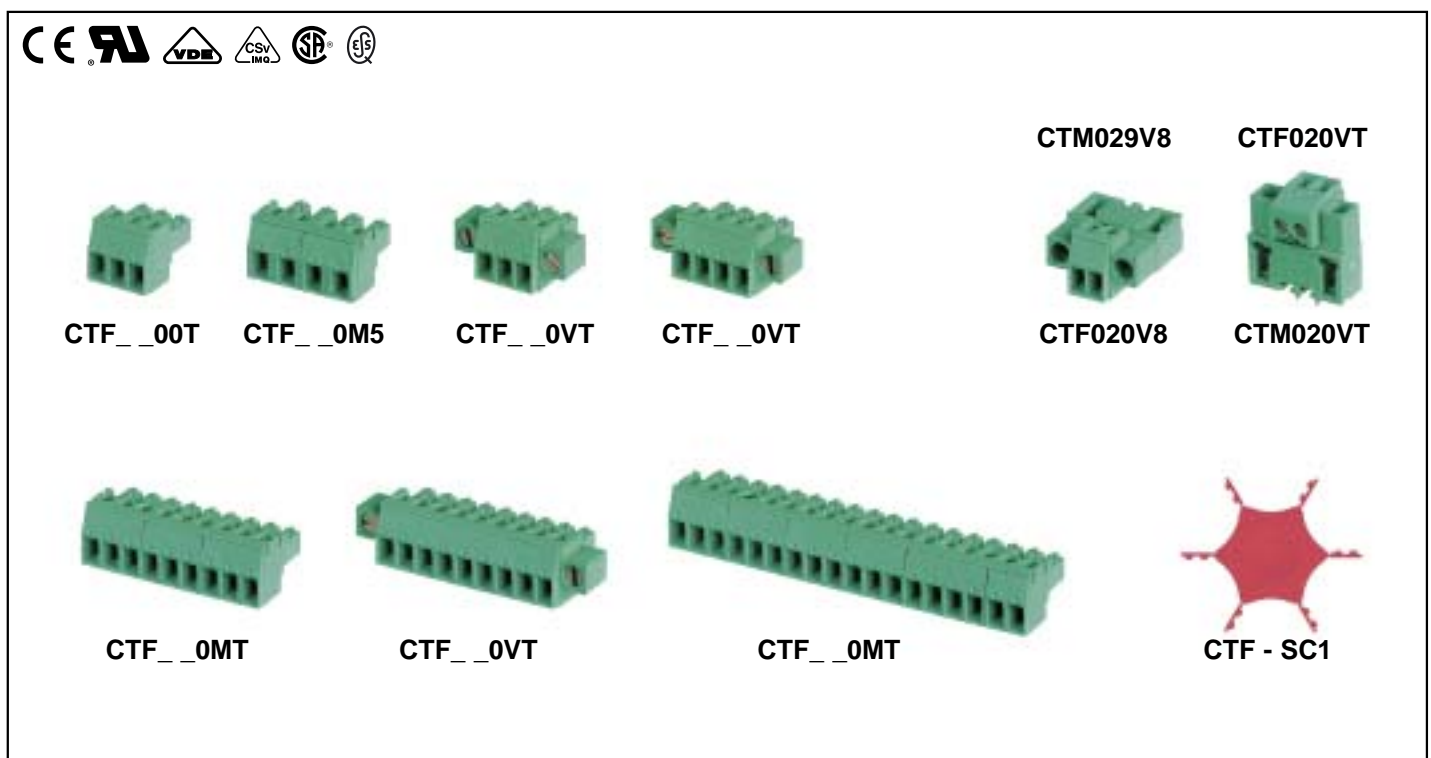




Dimensional Class:	LOW
Standard Color:	GREEN
Mated Connectors Height:	see page 188
Cage Clamp Opening Size:	.102 x .067 in (2.6 x 1.7 mm)
Wire Diameter:	max. .067 in (2.27 mm ²)
Versions:	Modular, Side Stackable, Locking Screw Flanges
Single Mold Poles:	from 2 to 25 (Modular and Side Stackable) from 2 to 23 (Locking Screw Flanges)
Metric Pitches:	.138 in (3.5 mm), .197 in (5 mm), .276 in (7 mm)
Imperial Pitches:	.15 in (3.81 mm), .2 in (5.08 mm), .3 in (7.62 mm)

Classe Dimensionale:	BASSA
Colore Standard:	VERDE
Altezza Connettore Completo:	vedere pag. 190
Apertura Introduzione Filo:	2,6 x 1,7 mm
Diametro Filo Inseribile:	max. 1,7 mm (2,27 mm ²)
Versioni:	Modulare, Affiancabile, con Viti
Vie Monolitiche:	da 2 a 25 (Modulare e Affiancabile) da 2 a 23 (con Viti)
Passi Metrici:	3,5 mm, 5 mm, 7 mm
Passi in Pollici:	3,81 mm, 5,08 mm, 7,62 mm



The CT connector Series for printed circuit boards can be polarized both by means of the plastic housing and by the use of CTM-LC1 and CTF-SC1 Coding Splines and Clips.

For further details please refer to page 186.

The CTF connector Series satisfies the user's mounting needs with the following possibilities:

- mating with CTM male connector;
- using individual single mold connectors from 2 to 25 poles;
- combining Modular connectors from 2 to 25 poles or use Side Stackable connectors from 2 to 25 poles to obtain any number of poles;
- minimizing the stock by storing only selected connectors (ex. 2 - 3... 25 poles) to enable combinations as described above;
- using a custom Kit package to simplify the product management (part-number reduction), to minimize the stock, to improve the assembly and to reduce production errors.

Il connettore Serie CT per circuiti stampati può essere polarizzato sia tramite il corpo plastico, sia con Linguette e Staffe di codifica CTM-LC1 e CTF-SC1.

Per ulteriori dettagli consultare la pagina 186.

Il connettore Serie CTF soddisfa le esigenze di montaggio dell'utilizzatore; infatti è possibile:

- accoppiarlo con il connettore maschio CTM;
- utilizzare singolarmente i connettori monolitici da 2 a 25 vie;
- comporre i connettori Modulari da 2 a 25 vie oppure affiancare i connettori Affiancabili da 2 a 25 vie per ottenere qualsiasi numero di vie;
- gestire uno stoccaggio minimo di connettori (es. 2 - 3... 25 vie) per ottenere quanto sopra;
- utilizzare le confezioni Kit che permettono una semplificazione della gestione del prodotto (riduzione dei part-number), del magazzino, dell'assemblaggio, nonché una riduzione dei rischi

M2 nickel-plated Copper Alloy Screw.		Vite M2 in Lega di Rame nichelata.
Nickel-plated Copper Alloy Cage Clamp.		Morsetto in Lega di Rame nichelato.
PA 6.6 Polyamide Housing. Standard Color: GREEN. V-0 Self-extinguishing According to UL 94. Chlorinated solvents resistant, with no Phosphor, Dioxin or detrimental to health Halogens.		Corpo in Poliammide PA 6.6. Colore Standard: VERDE. Autoestinguente Classe V-0 sec. UL 94. Resistente ai solventi clorurati, senza Fosforo, Diossina e Alogeni dannosi alla salute.
Leadfree tin-plated Phosphorous Bronze spring.		Molla in Bronzo Fosforoso stagnato senza piombo.
Easy-to-solder leadfree tin-plated Phosphorous Bronze Pin.		Terminale in Bronzo Fosforoso stagnato saldabile senza piombo.
		CTM

Mechanical Characteristics

Insertion force per pole:	max. .674 lb (max. 3 N)
Withdrawal force per pole:	min. .337 lb (min. 1.5 N)
Recommended tightening torque:	0.3 Nm (UL)*
Stripping length:	.20 ÷ .24 in (5 ÷ 6 mm)
Operating temperature range:	-40 °F ÷ +230 °F (-40 °C ÷ +110 °C)
Climatic category:	40/110/21 According to IEC 68-1

Electrical Characteristics

Solid wire section:	30±14 AWG - 0.05±1.5 mm ² (UL, CSA)*
Stranded wire section:	30±14 AWG - 0.05±1 mm ² (UL, CSA)*
Rated voltage:	.138 in (3.5 mm) and .150 in (3.81 mm) pitch 300 V (UL, CSA)* .197 in (5 mm) and .200 in (5.08 mm) pitch 300 V (UL, CSA)* .276 in (7 mm) and .300 in (7.62 mm) pitch 750 V (IMQ)*
Rated current:	13.5 A (IMQ)*
Contact resistance:	<15 mΩ
Insulation resistance:	>10 ⁹ Ω (500V DC)

*All the a.m. data refer to the highest values amongst the certificated ones (). **V** voltage, **I** current values and tightening torque are related to the norms to be applied to the product and to its use.

Caratteristiche Meccaniche

Forza di inserzione per contatto:	max. 3 N
Forza di disinserzione per contatto:	min. 1,5 N
Coppia di serraggio consigliata:	0,3 Nm (UL)*
Lunghezza di spellatura:	5 ÷ 6 mm
Temperature di funzionamento:	-40 °C ÷ +110 °C
Categoria climatica:	40/110/21 Secondo IEC 68-1

Caratteristiche Elettriche

Conduttore connettibile rigido:	0,05±1,5 mm ² - 30±14 AWG (UL, CSA)*
Conduttore connettibile flessibile:	0,05±1 mm ² - 30±14 AWG (UL, CSA)*
Tensione nominale:	passo 3,5 mm e 3,81 mm 300 V (UL, CSA)* passo 5 mm e 5,08 mm 300 V (UL, CSA)* passo 7 mm e 7,62 mm 750 V (IMQ)*
Corrente nominale:	13,5 A (IMQ)*
Resistenza di contatto:	<15 mΩ
Resistenza di isolamento:	>10 ⁹ Ω (500V CC)

*Per ogni caratteristica, i dati riportati si riferiscono ai massimi valori fra quelli certificati (). I valori di tensione **V** corrente **I** e, coppia di serraggio sono legati alle norme applicabili al prodotto ed al tipo di utilizzo.

Approvals

(see also "Certifications", page 22)

VDE:	Reg. N. 134066 ÜG
	130 V - 11 A - T 95 - 1 mm ² for 3.5 mm and 3.81 mm pitch 250 V - 11 A - T 95 - 1 mm ² for 5 mm and 5.08 mm pitch 450 V - 11 A - T 95 - 1 mm ² for 7 mm and 7.62 mm pitch

IMQ:	Certificate with Surveillance CA02.00901
ESS:	130 V - T 110 - 13.5 A - 1.5 mm ² solid (11 A - 1 mm ² stranded) for 3.5 mm and 3.81 mm pitch 250 V - T 110 - 13.5 A - 1.5 mm ² solid (11 A - 1 mm ² stranded) for 5 mm and 5.08 mm pitch 750 V - T 110 - 13.5 A - 1.5 mm ² solid (11 A - 1 mm ² stranded) for 7 mm and 7.62 mm pitch

CSA:	File LR 102896-2
	300 V - 11 A - 30±16 AWG for 3.5 mm, 3.81 mm, 5 mm and 5.08 mm pitch 450 V - 11 A - 30±16 AWG for 7 mm and 7.62 mm pitch

UL:	File E 167473
	300 V - 11 A - 30±14 AWG for 3.5 mm, 3.81 mm, 5 mm, 5.08 mm, 7 mm and 7.62 mm pitch Application values for end-use equipment have to be in accordance to UL norms and applicable to it.

Certificazioni

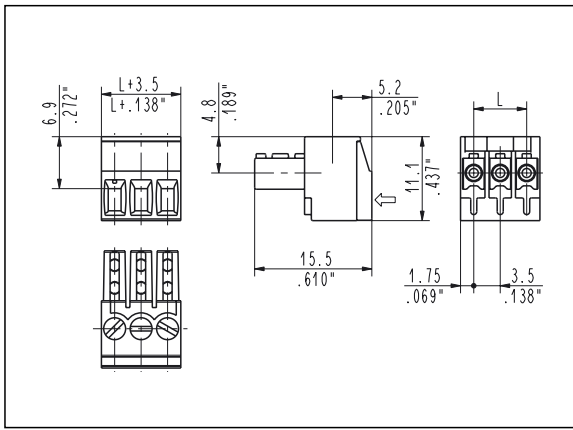
(vedi anche "Certificazioni", pag. 22)

VDE:	Reg. N. 134066 ÜG
	130 V - 11 A - T 95 - 1 mm ² per passo 3,5 mm e 3,81 mm 250 V - 11 A - T 95 - 1 mm ² per passo 5 mm e 5,08 mm 450 V - 11 A - T 95 - 1 mm ² per passo 7 mm e 7,62 mm

IMQ:	Certificazione con Sorveglianza CA02.00901
ESS:	130 V - T 110 - 13,5 A - 1,5 mm ² rigido (11 A - 1 mm ² flessibile) per passo 3,5 mm e 3,81 mm 250 V - T 110 - 13,5 A - 1,5 mm ² rigido (11 A - 1 mm ² flessibile) per passo 5 mm e 5,08 mm 750 V - T 110 - 13,5 A - 1,5 mm ² rigido (11 A - 1 mm ² flessibile) per passo 7 mm e 7,62 mm

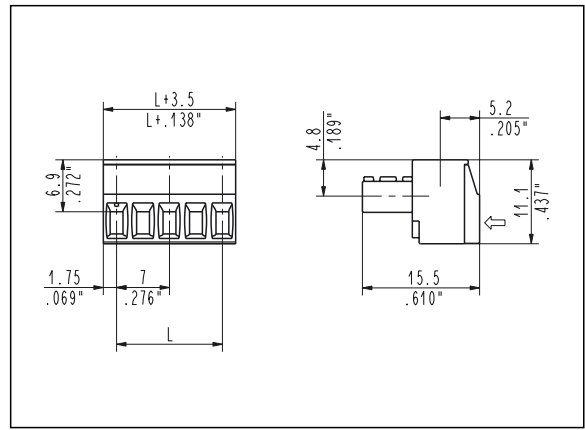
CSA:	File LR 102896-2
	300 V - 11 A - 30±16 AWG per passo 3,5 mm, 3,81 mm, 5 mm e 5,08 mm 450 V - 11 A - 30±16 AWG per passo 7 mm e 7,62 mm

UL:	File E 167473
	300 V - 11 A - 30±14 AWG per passo 3,5 mm, 3,81 mm, 5 mm, 5,08 mm, 7 mm e 7,62 mm I valori di utilizzo per l'apparecchiatura finale devono essere conformi alle norme UL ad essa applicabili.



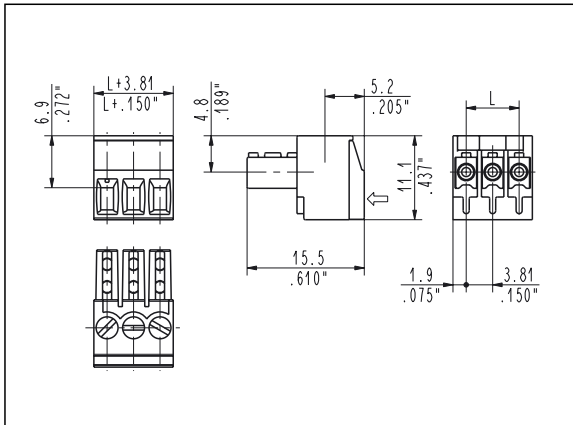
CTF_008 Side Stackable Female
3.5 mm / .138" Pitch Weight per pole: 0.78 g

Poles	STD Code	L [mm]	L [inch]	Pcs/pack.	W [kg]
02	CTF02008	3.50	0.138	500	0.78
03	CTF03008	7.00	0.276	400	0.94
04	CTF04008	10.50	0.413	300	0.94
05	CTF05008	14.00	0.551	250	0.98
06	CTF06008	17.50	0.689	200	0.94
07	CTF07008	21.00	0.827	175	0.96
08	CTF08008	24.50	0.965	125	0.94
09	CTF09008	28.00	1.102	125	0.88
10	CTF10008	31.50	1.240	100	0.78
11	CTF11008	35.00	1.378	100	0.86
12	CTF12008	38.50	1.516	75	0.70
13	CTF13008	42.00	1.654	75	0.76
14	CTF14008	45.50	1.791	100	0.82
15	CTF15008	49.00	1.929	100	0.88
16	CTF16008	52.50	2.067	100	0.94
17	CTF17008	56.00	2.205	50	0.66
18	CTF18008	59.50	2.343	50	0.70
19	CTF19008	63.00	2.480	50	0.74
20	CTF20008	66.50	2.618	50	0.78
21	CTF21008	70.00	2.756	50	0.82
22	CTF22008	73.50	2.894	50	0.86
23	CTF23008	77.00	3.031	50	0.90
24	CTF24008	80.50	3.169	50	0.94
25	CTF25008	84.00	3.307	50	0.98



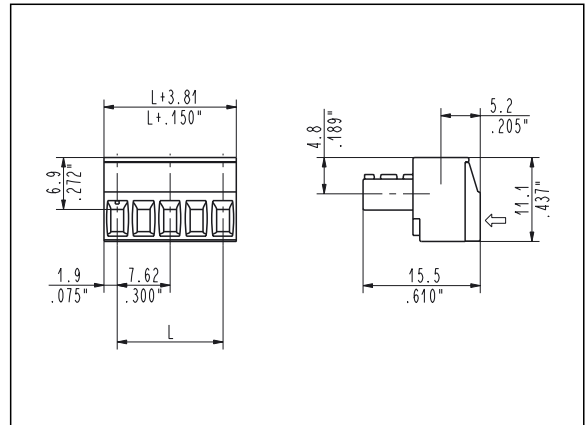
CTF_009 Side Stackable Female
7 mm / .275" Pitch Weight per pole: 0.94 g

Poles	STD Code	L [mm]	L [inch]	Pcs/pack.	W [kg]
02	CTF02009	7.00	0.276	400	0.75
03	CTF03009	14.00	0.551	250	0.70
04	CTF04009	21.00	0.827	175	0.66
05	CTF05009	28.00	1.102	125	0.59
06	CTF06009	35.00	1.378	100	0.56
07	CTF07009	42.00	1.654	100	0.49
08	CTF08009	49.00	1.929	100	0.56
09	CTF09009	56.00	2.205	50	0.42
10	CTF10009	63.00	2.480	50	0.47
11	CTF11009	70.00	2.756	50	0.51
12	CTF12009	77.00	3.031	50	0.56
13	CTF13009	84.00	3.307	50	0.61



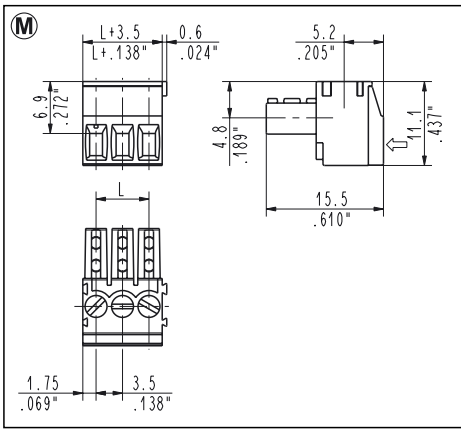
CTF_00T Side Stackable Female
3.81 mm / .150" Pitch Weight per pole: 0.78 g

Poles	STD Code	L [mm]	L [inch]	Pcs/pack.	W [kg]
02	CTF0200T	3.81	0.150	500	0.78
03	CTF0300T	7.62	0.300	400	0.94
04	CTF0400T	11.43	0.450	300	0.94
05	CTF0500T	15.24	0.600	250	0.98
06	CTF0600T	19.05	0.750	200	0.94
07	CTF0700T	22.86	0.900	175	0.96
08	CTF0800T	26.67	1.050	125	0.94
09	CTF0900T	30.48	1.200	125	0.88
10	CTF1000T	34.29	1.350	100	0.78
11	CTF1100T	38.10	1.500	100	0.86
12	CTF1200T	41.91	1.650	75	0.70
13	CTF1300T	45.72	1.800	75	0.76
14	CTF1400T	49.53	1.950	100	0.82
15	CTF1500T	53.34	2.100	100	0.88
16	CTF1600T	57.15	2.250	100	0.94
17	CTF1700T	60.96	2.400	50	0.66
18	CTF1800T	64.77	2.550	50	0.70
19	CTF1900T	68.58	2.700	50	0.74
20	CTF2000T	72.39	2.850	50	0.78
21	CTF2100T	76.20	3.000	50	0.82
22	CTF2200T	80.01	3.150	50	0.86
23	CTF2300T	83.82	3.300	50	0.90
24	CTF2400T	87.63	3.450	50	0.94
25	CTF2500T	91.44	3.600	50	0.98



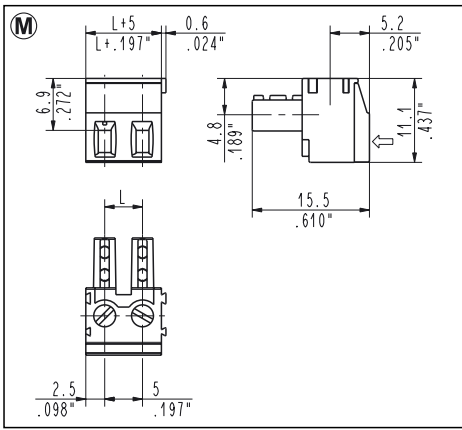
CTF_007 Side Stackable Female
7.62 mm / .300" Pitch Weight per pole: 0.94 g

Poles	STD Code	L [mm]	L [inch]	Pcs/pack.	W [kg]
02	CTF02007	7.62	0.300	400	0.75
03	CTF03007	15.24	0.600	250	0.70
04	CTF04007	22.86	0.900	175	0.66
05	CTF05007	30.48	1.200	125	0.59
06	CTF06007	38.10	1.500	100	0.56
07	CTF07007	45.72	1.800	100	0.49
08	CTF08007	53.34	2.100	100	0.56
09	CTF09007	60.96	2.400	50	0.42
10	CTF10007	68.58	2.700	50	0.47
11	CTF11007	76.20	3.000	50	0.51
12	CTF12007	83.82	3.300	50	0.56
13	CTF13007	91.44	3.600	50	0.61



CTF_0M8 Modular-Side Stackable Female
3.5 mm / .138" Pitch Weight per pole: 0.78 g

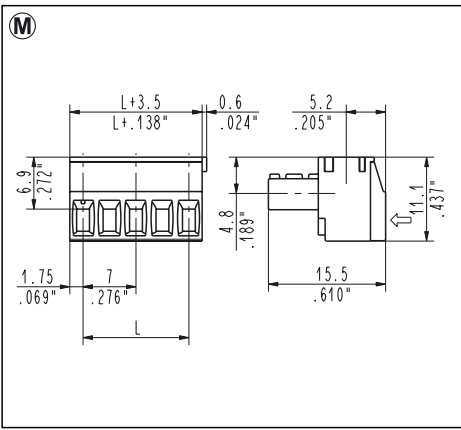
Poles	STD Code	L [mm]	L [inch]	Pcs/pack.	W [kg]
02	CTF020M8	3.50	0.138	500	0.78
03	CTF030M8	7.00	0.276	400	0.94
04	CTF040M8	10.50	0.413	300	0.94
05	CTF050M8	14.00	0.551	250	0.98
06	CTF060M8	17.50	0.689	200	0.94
07	CTF070M8	21.00	0.827	175	0.96
08	CTF080M8	24.50	0.965	125	0.94
09	CTF090M8	28.00	1.102	125	0.88
10	CTF100M8	31.50	1.240	100	0.78
11	CTF110M8	35.00	1.378	100	0.86
12	CTF120M8	38.50	1.516	75	0.70
13	CTF130M8	42.00	1.654	75	0.76
14	CTF140M8	45.50	1.791	100	0.82
15	CTF150M8	49.00	1.929	100	0.88
16	CTF160M8	52.50	2.067	100	0.94
17	CTF170M8	56.00	2.205	50	0.66
18	CTF180M8	59.50	2.343	50	0.70
19	CTF190M8	63.00	2.480	50	0.74
20	CTF200M8	66.50	2.618	50	0.78
21	CTF210M8	70.00	2.756	50	0.82
22	CTF220M8	73.50	2.894	50	0.86
23	CTF230M8	77.00	3.031	50	0.90
24	CTF240M8	80.50	3.169	50	0.94
25	CTF250M8	84.00	3.307	50	0.98



CTF_0M1 Modular-Side Stackable Female
5 mm / .197" Pitch Weight per pole: 0.85 g

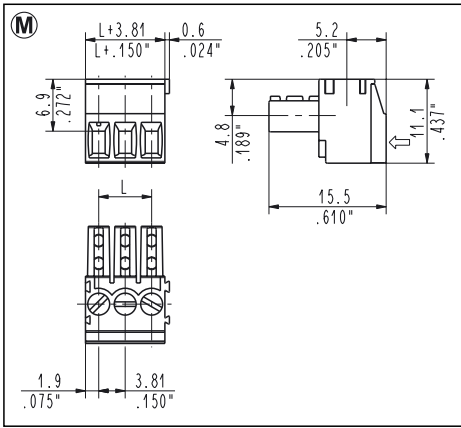
Poles	STD Code	L [mm]	L [inch]	Pcs/pack.	W [kg]
02	CTF020M1	5.00	0.197	400	0.68
03	CTF030M1	10.00	0.394	250	0.64

More poles are obtainable by combining modular connectors



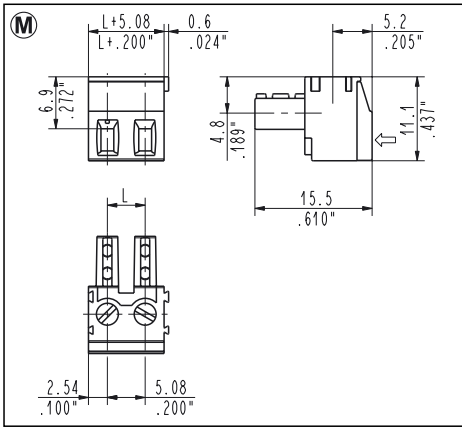
CTF_0M9 Modular-Side Stackable Female
7 mm / .275" Pitch Weight per pole: 0.94 g

Poles	STD Code	L [mm]	L [inch]	Pcs/pack.	W [kg]
02	CTF020M9	7.00	0.276	400	0.75
03	CTF030M9	14.00	0.551	250	0.70
04	CTF040M9	21.00	0.827	175	0.66
05	CTF050M9	28.00	1.102	125	0.59
06	CTF060M9	35.00	1.378	100	0.56
07	CTF070M9	42.00	1.654	100	0.49
08	CTF080M9	49.00	1.929	100	0.56
09	CTF090M9	56.00	2.205	50	0.42
10	CTF100M9	63.00	2.480	50	0.47
11	CTF110M9	70.00	2.756	50	0.51
12	CTF120M9	77.00	3.031	50	0.56
13	CTF130M9	84.00	3.307	50	0.61



CTF_0MT Modular-Side Stackable Female
3.81 mm / .150" Pitch Weight per pole: 0.78 g

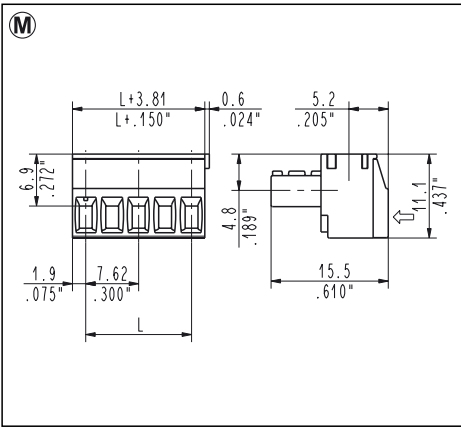
Poles	STD Code	L [mm]	L [inch]	Pcs/pack.	W [kg]
02	CTF020MT	3.81	0.150	500	0.78
03	CTF030MT	7.62	0.300	400	0.94
04	CTF040MT	11.43	0.450	300	0.94
05	CTF050MT	15.24	0.600	250	0.98
06	CTF060MT	19.05	0.750	200	0.94
07	CTF070MT	22.86	0.900	175	0.96
08	CTF080MT	26.67	1.050	125	0.94
09	CTF090MT	30.48	1.200	125	0.88
10	CTF100MT	34.29	1.350	100	0.78
11	CTF110MT	38.10	1.500	100	0.86
12	CTF120MT	41.91	1.650	75	0.70
13	CTF130MT	45.72	1.800	75	0.76
14	CTF140MT	49.53	1.950	100	0.82
15	CTF150MT	53.34	2.100	100	0.88
16	CTF160MT	57.15	2.250	100	0.94
17	CTF170MT	60.96	2.400	50	0.66
18	CTF180MT	64.77	2.550	50	0.70
19	CTF190MT	68.58	2.700	50	0.74
20	CTF200MT	72.39	2.850	50	0.78
21	CTF210MT	76.20	3.000	50	0.82
22	CTF220MT	80.01	3.150	50	0.86
23	CTF230MT	83.82	3.300	50	0.90
24	CTF240MT	87.63	3.450	50	0.94
25	CTF250MT	91.44	3.600	50	0.98



CTF_0M5 Modular-Side Stackable Female
5.08 mm / .200" Pitch Weight per pole: 0.85 g

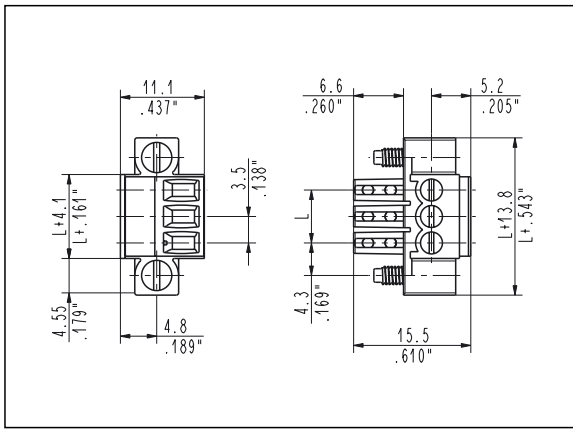
Poles	STD Code	L [mm]	L [inch]	Pcs/pack.	W [kg]
02	CTF020M5	5.08	0.200	400	0.68
03	CTF030M5	10.16	0.400	250	0.64

More poles are obtainable by combining modular connectors



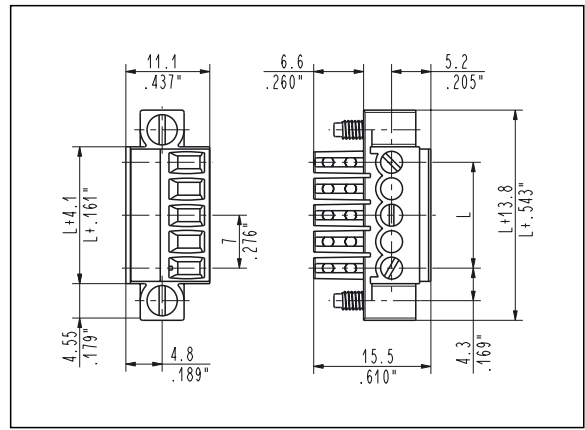
CTF_0M7 Modular-Side Stackable Female
7.62 mm / .300" Pitch Weight per pole: 0.94 g

Poles	STD Code	L [mm]	L [inch]	Pcs/pack.	W [kg]
02	CTF020M7	7.62	0.300	400	0.75
03	CTF030M7	15.24	0.600	250	0.70
04	CTF040M7	22.86	0.900	175	0.66
05	CTF050M7	30.48	1.200	125	0.59
06	CTF060M7	38.10	1.500	100	0.56
07	CTF070M7	45.72	1.800	100	0.49
08	CTF080M7	53.34	2.100	100	0.56
09	CTF090M7	60.96	2.400	50	0.42
10	CTF100M7	68.58	2.700	50	0.47
11	CTF110M7	76.20	3.000	50	0.51
12	CTF120M7	83.82	3.300	50	0.56
13	CTF130M7	91.44	3.600	50	0.61



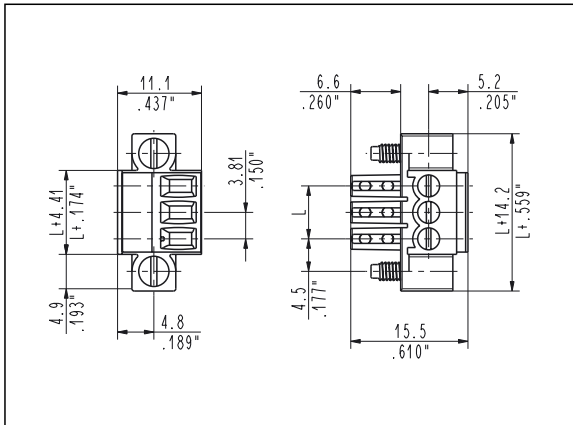
CTF_0V8 Locking Screw Flanges Female
3.5 mm / .138" Pitch Weight per pole: 1.14 g

Poles	STD Code	L [mm]	L [inch]	Pcs/pack.	W [kg]
02	CTF020V8	3.50	0.138	250	0.57
03	CTF030V8	7.00	0.276	200	0.69
04	CTF040V8	10.50	0.413	175	0.80
05	CTF050V8	14.00	0.551	150	0.86
06	CTF060V8	17.50	0.689	125	0.86
07	CTF070V8	21.00	0.827	100	0.80
08	CTF080V8	24.50	0.965	100	0.92
09	CTF090V8	28.00	1.102	75	0.77
10	CTF100V8	31.50	1.240	75	0.86
11	CTF110V8	35.00	1.378	75	0.94
12	CTF120V8	38.50	1.516	75	1.03
13	CTF130V8	42.00	1.654	75	1.12
14	CTF140V8	45.50	1.791	50	0.80
15	CTF150V8	49.00	1.929	50	0.86
16	CTF160V8	52.50	2.067	50	0.92
17	CTF170V8	56.00	2.205	50	0.97
18	CTF180V8	59.50	2.343	50	1.03
19	CTF190V8	63.00	2.480	50	1.09
20	CTF200V8	66.50	2.618	50	1.14
21	CTF210V8	70.00	2.756	50	1.20
22	CTF220V8	73.50	2.894	50	1.26
23	CTF230V8	77.00	3.031	50	1.32



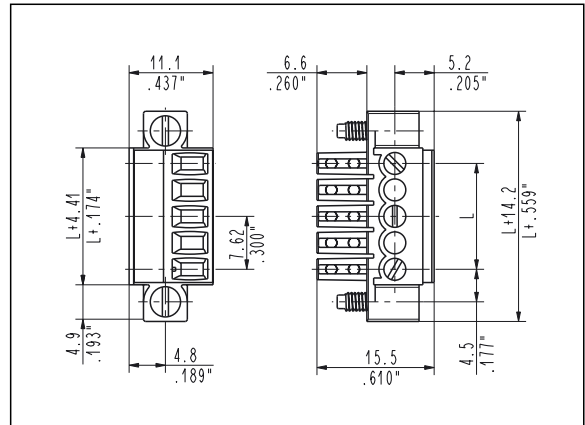
CTF_0V9 Locking Screw Flanges Female
7 mm / .275" Pitch Weight per pole: 1.25 g

Poles	STD Code	L [mm]	L [inch]	Pcs/pack.	W [kg]
02	CTF020V9	7.00	0.276	200	0.50
03	CTF030V9	14.00	0.551	150	0.56
04	CTF040V9	21.00	0.827	100	0.50
05	CTF050V9	28.00	1.102	75	0.47
06	CTF060V9	35.00	1.378	75	0.56
07	CTF070V9	42.00	1.654	75	0.66
08	CTF080V9	49.00	1.929	50	0.50
09	CTF090V9	56.00	2.205	50	0.56
10	CTF100V9	63.00	2.480	50	0.62
11	CTF110V9	70.00	2.756	50	0.69
12	CTF120V9	77.00	3.031	50	0.75



CTF_0VT Locking Screw Flanges Female
3.81 mm / .150" Pitch Weight per pole: 1.14 g

Poles	STD Code	L [mm]	L [inch]	Pcs/pack.	W [kg]
02	CTF020VT	3.81	0.150	250	0.57
03	CTF030VT	7.62	0.300	200	0.69
04	CTF040VT	11.43	0.450	175	0.80
05	CTF050VT	15.24	0.600	150	0.86
06	CTF060VT	19.05	0.750	125	0.86
07	CTF070VT	22.86	0.900	100	0.80
08	CTF080VT	26.67	1.050	100	0.92
09	CTF090VT	30.48	1.200	75	0.77
10	CTF100VT	34.29	1.350	75	0.86
11	CTF110VT	38.10	1.500	75	0.94
12	CTF120VT	41.91	1.650	75	1.03
13	CTF130VT	45.72	1.800	75	1.12
14	CTF140VT	49.53	1.950	50	0.80
15	CTF150VT	53.34	2.100	50	0.86
16	CTF160VT	57.15	2.250	50	0.92
17	CTF170VT	60.96	2.400	50	0.97
18	CTF180VT	64.77	2.550	50	1.03
19	CTF190VT	68.58	2.700	50	1.09
20	CTF200VT	72.39	2.850	50	1.14
21	CTF210VT	76.20	3.000	50	1.20
22	CTF220VT	80.01	3.150	50	1.26
23	CTF230VT	83.82	3.300	50	1.32



CTF_0V7 Locking Screw Flanges Female
7.62 mm / .300" Pitch Weight per pole: 1.25 g

Poles	STD Code	L [mm]	L [inch]	Pcs/pack.	W [kg]
02	CTF020V7	7.62	0.300	200	0.50
03	CTF030V7	15.24	0.600	150	0.56
04	CTF040V7	22.86	0.900	100	0.50
05	CTF050V7	30.48	1.200	75	0.47
06	CTF060V7	38.10	1.500	75	0.56
07	CTF070V7	45.72	1.800	75	0.66
08	CTF080V7	53.34	2.100	50	0.50
09	CTF090V7	60.96	2.400	50	0.56
10	CTF100V7	68.58	2.700	50	0.62
11	CTF110V7	76.20	3.000	50	0.69
12	CTF120V7	83.82	3.300	50	0.75