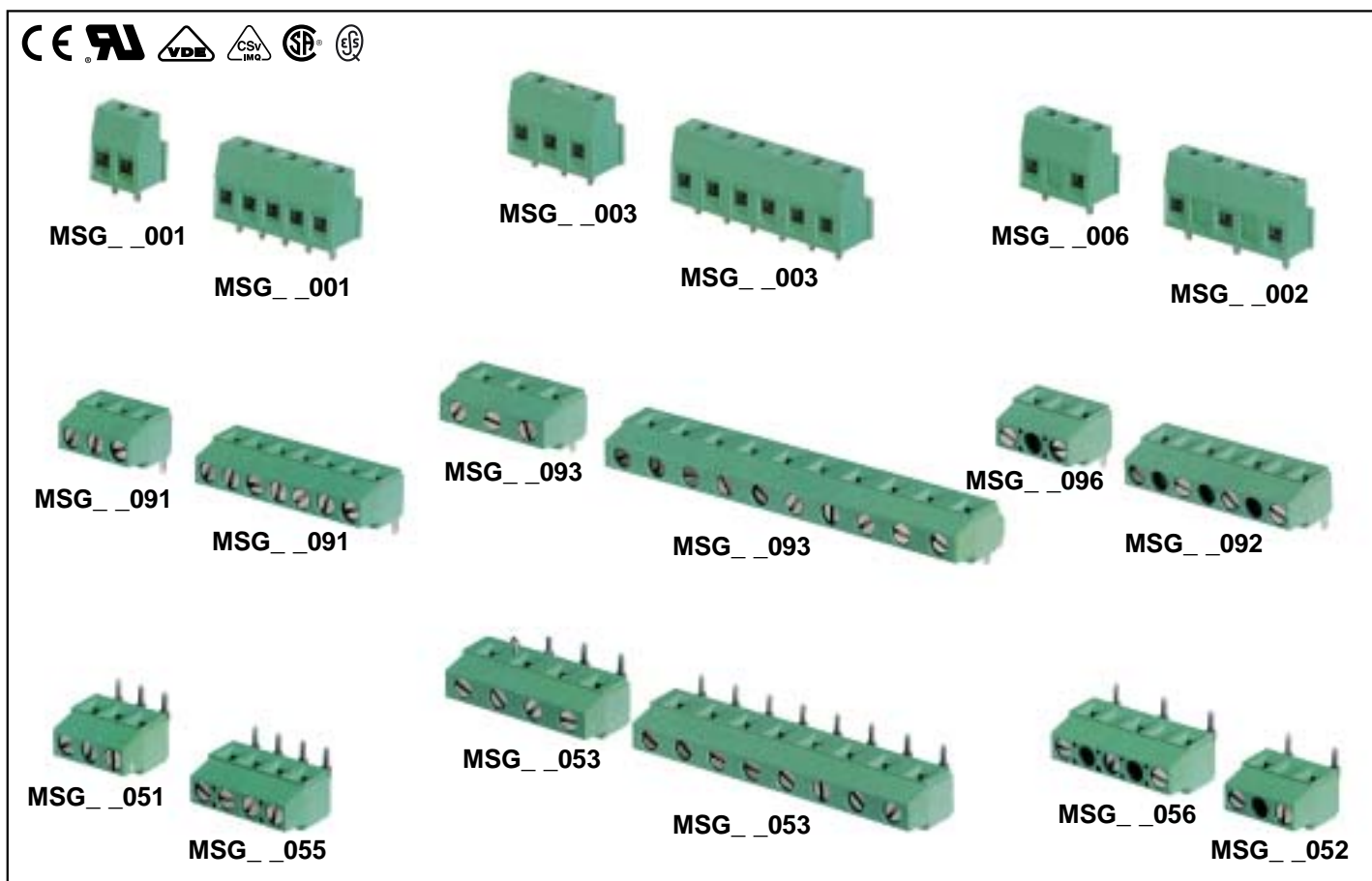




**Dimensional Class:** MEDIUM  
**Standard Color:** GREEN  
**Height:** .531 in (13.5 mm) Straight - .354 in (9.0 mm) 90° and 270°  
**Clamp Opening Size:** .098 x .087 in (2.5 x 2.2 mm)  
**Wire Diameter:** max. .087 in (3.80 mm)  
**Versions:** Modular with Dovetails  
**Single Mold Poles:** from 2 to 25  
**Metric Pitches:** .197 in (5 mm), .295 in (7.5 mm), .394 in (10 mm)  
**Imperial Pitches:** .2 in (5.08 mm), .3 in (7.62 mm), 4 in (10.16 mm)

**Classe Dimensionale:** MEDIA  
**Colore Standard:** VERDE  
**Altezza:** 13,5 mm Diritto - 9,0 mm 90° e 270°  
**Apertura Introduzione Filo:** 2,5 x 2,2 mm  
**Diametro Filo Inseribile:** max. 2,2 mm (3,80 mm<sup>2</sup>)  
**Versioni:** Modulare con incastro a coda di rondine  
**Vie Monolitiche:** da 2 a 25  
**Passi Metrici:** 5 mm, 7,5 mm, 10 mm  
**Passi in Pollici:** 5,08 mm, 7,62 mm, 10,16 mm

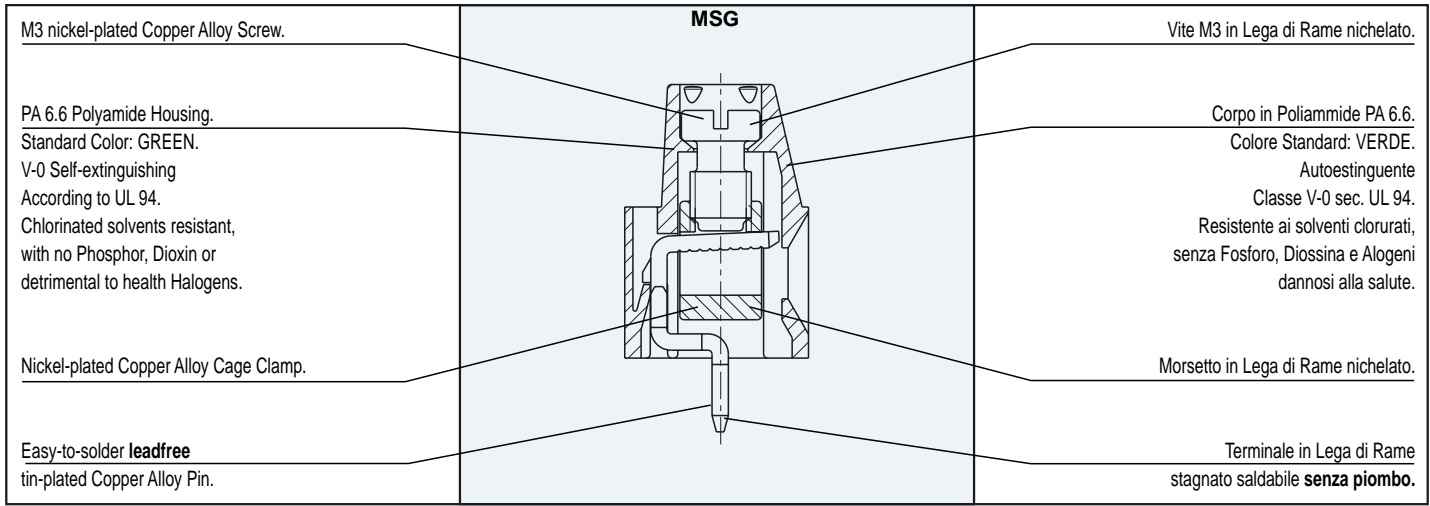


The modular MSG terminal block Series for printed circuit boards satisfies the user's mounting needs with the following possibilities:

- using individual single mold terminal blocks from 2 to 25 poles;
- combining single mold terminal blocks from 2 to 25 poles to obtain any number of poles; all MSG products, including single mold versions, have dovetail capabilities;
- minimizing the stock by storing only some base terminal blocks (ex. 2 - 3... 25 poles) to enable combinations as described above;
- being included in a custom Kit package to simplify the product management (part-numbers reduction), to minimize the stock, to improve the assembly and to reduce production errors.

La morsettiere modulare Serie MSG per circuiti stampati soddisfa le esigenze di montaggio dell'utilizzatore; infatti è possibile:

- utilizzare singolarmente le morsettiere base monolitiche da 2 a 25 vie;
- comporre le morsettiere base monolitiche da 2 a 25 vie per ottenere qualsiasi numero di vie;
- gestire uno stoccaggio minimo di morsettiere base (es. 2- 3... 25 vie) per ottenere quanto sopra;
- utilizzare le confezioni Kit che permettono una semplificazione della gestione del prodotto (riduzione dei part-number), del magazzino, dell'assemblaggio, nonché una riduzione dei rischi d'errore.



### Mechanical Characteristics

Recommended tightening torque:	0.8 Nm (UL)*
PCB thickness:	max. .094 in (max. 2.4 mm)
PCB hole diameter:	min. .055 in (min. 1.4 mm)
Stripping length:	.22 ÷ .26 in (5.5 ÷ 6.5 mm)
Operating temperature range:	-40 °F ÷ +230 °F (-40 °C ÷ +110 °C)
Climatic category :	40/110/21 According to IEC 68-1

### Electrical Characteristics

Solid wire section:	30÷13 AWG - 0.05÷2.5 mm <sup>2</sup> (UL, CSA)*
Stranded wire section:	30÷13 AWG - 0.05÷1.5 mm <sup>2</sup> (UL, CSA)*
Rated voltage:	.197 in (5 mm) and .200 in (5.08 mm) pitch 300 V (UL, CSA)* .295 in (7.5 mm) and .300 in (7.62 mm) pitch 750 V (IMQ)* .394 in (10 mm) and .400 in (10.16 mm) pitch 750 V (IMQ)*
Rated current:	24 A (IMQ)*
Contact resistance:	<15 mΩ
Insulation resistance:	>10 <sup>9</sup> Ω (500V DC)

\*All the a.m. data refer to the highest values amongst the certificated ones ( ). **V** voltage, **I** current values and tightening torque are related to the norms to be applied to the product and to its use.

### Caratteristiche Meccaniche

Coppia di serraggio consigliata:	0,8 Nm (UL)*
Spessore circuito stampato:	max. 2,4 mm
Diámetro fori circuito stampato:	min. 1,4 mm
Lunghezza di spellatura:	5,5 ÷ 6,5 mm
Temperature di funzionamento:	-40 °C ÷ +110 °C
Categoria climatica:	40/110/21 Secondo IEC 68-1

### Caratteristiche Elettriche

Conduttore connettabile rigido:	0,05÷2,5 mm <sup>2</sup> - 30÷13 AWG (UL, CSA)*
Conduttore connettabile flessibile:	0,05÷1,5 mm <sup>2</sup> - 30÷13 AWG (UL, CSA)*
Tensione nominale:	passo 5 mm e 5,08 mm 300 V (UL, CSA)* passo 7,5 mm e 7,62 mm 750 V (IMQ)* passo 10 mm e 10,16 mm 750 V (IMQ)*
Corrente nominale:	24 A (IMQ)*
Resistenza di contatto:	<15 mΩ
Resistenza di isolamento:	>10 <sup>9</sup> Ω (500V CC)

\*Per ogni caratteristica, i dati riportati si riferiscono ai massimi valori fra quelli certificati ( ). I valori di tensione **V** corrente **I** e, coppia di serraggio sono legati alle norme applicabili al prodotto ed al tipo di utilizzo.

### Approvals

(see also "Certifications", page 22)

<b>VDE:</b>	<b>Reg. N. 5659 ÜG</b> 250 V - 17,5 A - T 110 - 1,5 mm <sup>2</sup> for 5 mm and 5,08 mm pitch 750 V - 17,5 A - T 110 - 1,5 mm <sup>2</sup> for 7,5 mm and 7,62 mm pitch 750 V - 17,5 A - T 110 - 1,5 mm <sup>2</sup> for 10 mm and 10,16 mm pitch
-------------	---

<b>IMQ:</b>	<b>Certificate with Surveillance IMQ CSv EI056</b>
<b>ESS:</b>	250 V - T 110 - 24 A - 2,5 mm <sup>2</sup> solid (17,5 A - 1,5 mm <sup>2</sup> stranded) for 5 mm and 5,08 mm pitch 750 V - T 110 - 24 A - 2,5 mm <sup>2</sup> solid (17,5 A - 1,5 mm <sup>2</sup> stranded) for 7,5 mm, 7,62 mm, 10 mm and 10,16 mm pitch

<b>CSA:</b>	<b>File LR 102896-1</b> 300 V - 17,5 A - 30÷13 AWG for 5 mm and 5,08 mm pitch 450 V - 17,5 A - 30÷13 AWG for 7,5 mm and 7,62 mm pitch 600 V - 17,5 A - 30÷13 AWG for 10 mm and 10,16 mm pitch
-------------	--

<b>UL:</b>	<b>File E 167473</b> 300 V - 17,5 A (Factory Wiring), 15 A (Field Wiring) - 30÷14 AWG for 5 mm, 5,08 mm, 7,5 mm and 7,62 mm pitch 600 V - 17,5 A (Factory Wiring), 15 A (Field Wiring) - 30÷14 AWG for 10 mm and 10,16 mm pitch Application values for end-use equipment have to be in accordance to UL norms and applicable to it.
------------	--

### Certificazioni

(vedi anche "Certificazioni", pag. 22)

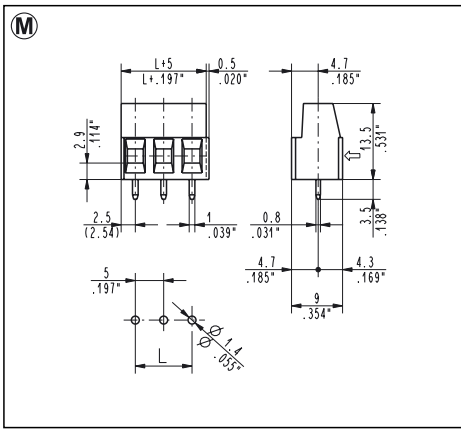


<b>VDE:</b>	<b>Reg. N. 5659 ÜG</b> 250 V - 17,5 A - T 110 - 1,5 mm <sup>2</sup> per passo 5 mm e 5,08 mm 750 V - 17,5 A - T 110 - 1,5 mm <sup>2</sup> per passo 7,5 mm e 7,62 mm 750 V - 17,5 A - T 110 - 1,5 mm <sup>2</sup> per passo 10 mm e 10,16 mm
-------------	---

<b>IMQ:</b>	<b>Certificato con Sorveglianza IMQ CSv EI056</b>
<b>ESS:</b>	250 V - T 110 - 24 A - 2,5 mm <sup>2</sup> rigido (17,5 A - 1,5 mm <sup>2</sup> flessibile) per passo 5 mm e 5,08 mm 750 V - T 110 - 24 A - 2,5 mm <sup>2</sup> rigido (17,5 A - 1,5 mm <sup>2</sup> flessibile) per passo 7,5 mm, 7,62 mm, 10 mm e 10,16 mm

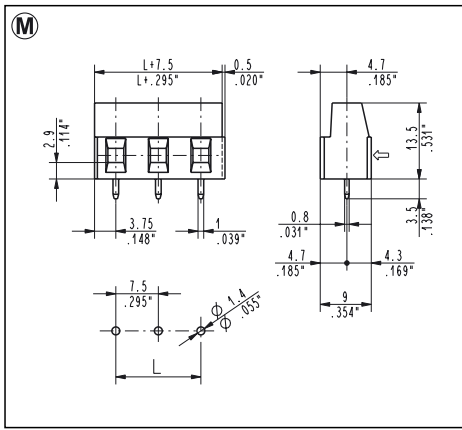
<b>CSA:</b>	<b>File LR 102896-1</b> 300 V - 17,5 A - 30÷13 AWG per passo 5 mm e 5,08 mm 450 V - 17,5 A - 30÷13 AWG per passo 7,5 mm e 7,62 mm 600 V - 17,5 A - 30÷13 AWG per passo 10 mm e 10,16 mm
-------------	--

<b>UL:</b>	<b>File E 167473</b> 300 V - 17,5 A (Factory Wiring), 15 A (Field Wiring) - 30÷14 AWG per passo 5 mm, 5,08 mm, 7,5 mm e 7,62 mm 600 V - 17,5 A (Factory Wiring), 15 A (Field Wiring) - 30÷14 AWG per passo 10 mm e 10,16 mm I valori di utilizzo per l'apparecchiatura finale devono essere conformi alle norme UL ad essa applicabili.
------------	--



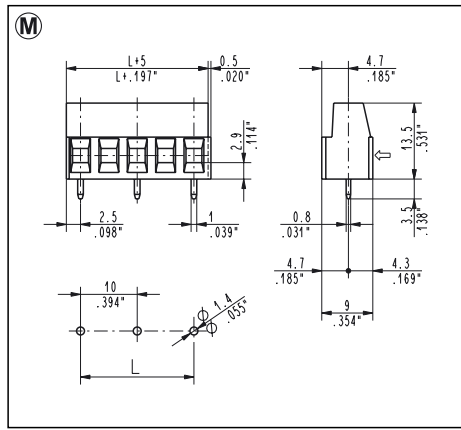
**MSG\_001** Straight, Side Entry  
5 mm / .197" Pitch Weight per pole: 1.25 g

Poles	STD Code	L [mm]	L [inch]	Pcs/pack.	W [kg]
02	MSG02001	5.00	0.197	900	2.25
03	MSG03001	10.00	0.394	600	2.25
04	MSG04001	15.00	0.591	400	2.00
05	MSG05001	20.00	0.787	350	2.18
06	MSG06001	25.00	0.984	300	2.25
07	MSG07001	30.00	1.181	250	2.18
08	MSG08001	35.00	1.378	200	2.00
09	MSG09001	40.00	1.575	175	1.97
10	MSG10001	45.00	1.772	175	2.18
11	MSG11001	50.00	1.969	150	2.06
12	MSG12001	55.00	2.165	150	2.25
13	MSG13001	60.00	2.362	75	1.22
14	MSG14001	65.00	2.559	75	1.31
15	MSG15001	70.00	2.756	75	1.40
16	MSG16001	75.00	2.953	75	1.50
17	MSG17001	80.00	3.150	75	1.59
18	MSG18001	85.00	3.346	75	1.68
19	MSG19001	90.00	3.543	50	1.19
20	MSG20001	95.00	3.740	50	1.25
21	MSG21001	100.00	3.937	50	1.31
22	MSG22001	105.00	4.134	50	1.37
23	MSG23001	110.00	4.331	50	1.44
24	MSG24001	115.00	4.528	50	1.50
25	MSG25001	120.00	4.724	50	1.56



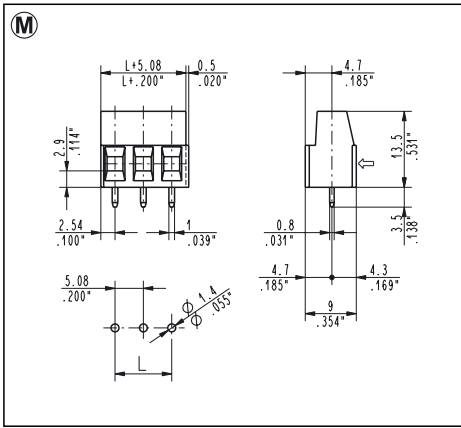
**MSG\_003** Straight, Side Entry  
7.5 mm / .295" Pitch Weight per pole: 1.45 g

Poles	STD Code	L [mm]	L [inch]	Pcs/pack.	W [kg]
02	MSG02003	7.50	0.295	300	0.87
03	MSG03003	15.00	0.591	200	0.87
04	MSG04003	22.50	0.886	150	0.87
05	MSG05003	30.00	1.181	100	0.73



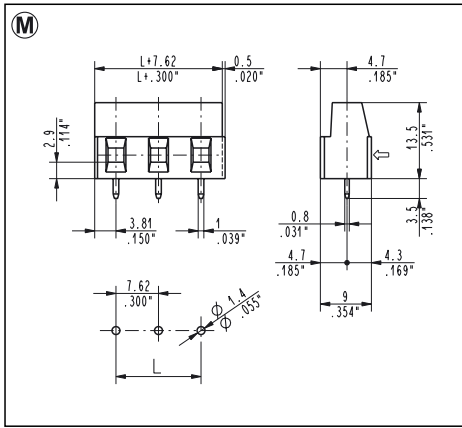
**MSG\_002** Straight, Side Entry  
10 mm / .394" Pitch Weight per pole: 1.48 g

Poles	STD Code	L [mm]	L [inch]	Pcs/pack.	W [kg]
02	MSG02002	10.00	0.394	300	0.89
03	MSG03002	20.00	0.787	175	0.78
04	MSG04002	30.00	1.181	125	0.74
05	MSG05002	40.00	1.575	100	0.74
06	MSG06002	50.00	1.969	75	0.66
07	MSG07002	60.00	2.362	75	0.78
08	MSG08002	70.00	2.756	75	0.89
09	MSG09002	80.00	3.150	75	1.00
10	MSG10002	90.00	3.543	50	0.74
11	MSG11002	100.00	3.937	50	0.81
12	MSG12002	110.00	4.331	50	0.89
13	MSG13002	120.00	4.724	50	0.96



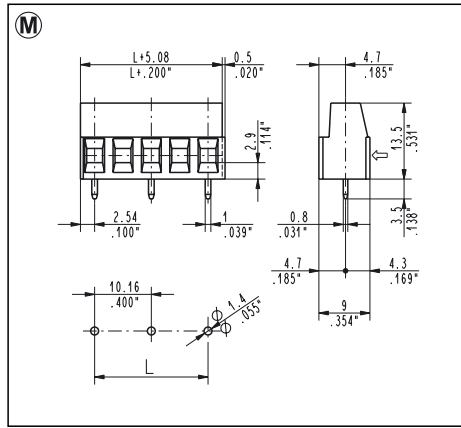
**MSG\_005** Straight, Side Entry  
5.08 mm / .200" Pitch Weight per pole: 1.25 g

Poles	STD Code	L [mm]	L [inch]	Pcs/pack.	W [kg]
02	MSG02005	5.08	0.200	900	2.25
03	MSG03005	10.16	0.400	600	2.25
04	MSG04005	15.24	0.600	400	2.00
05	MSG05005	20.32	0.800	350	2.18
06	MSG06005	25.40	1.000	300	2.25
07	MSG07005	30.48	1.200	250	2.18
08	MSG08005	35.56	1.400	200	2.00
09	MSG09005	40.64	1.600	175	1.97
10	MSG10005	45.72	1.800	175	2.18
11	MSG11005	50.80	2.000	150	2.06
12	MSG12005	55.88	2.200	150	2.25
13	MSG13005	60.96	2.400	75	1.22
14	MSG14005	66.04	2.600	75	1.31
15	MSG15005	71.12	2.800	75	1.40
16	MSG16005	76.20	3.000	75	1.50
17	MSG17005	81.28	3.200	75	1.59
18	MSG18005	86.36	3.400	75	1.68
19	MSG19005	91.44	3.600	50	1.19
20	MSG20005	96.52	3.800	50	1.25
21	MSG21005	101.60	4.000	50	1.31
22	MSG22005	106.68	4.200	50	1.37
23	MSG23005	111.76	4.400	50	1.44
24	MSG24005	116.84	4.600	50	1.50
25	MSG25005	121.92	4.800	50	1.56



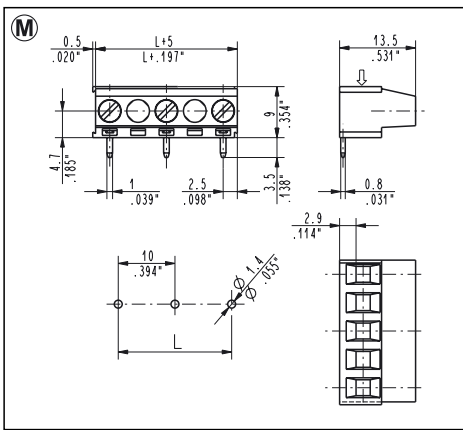
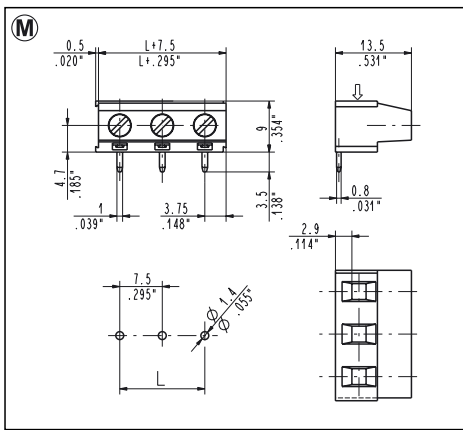
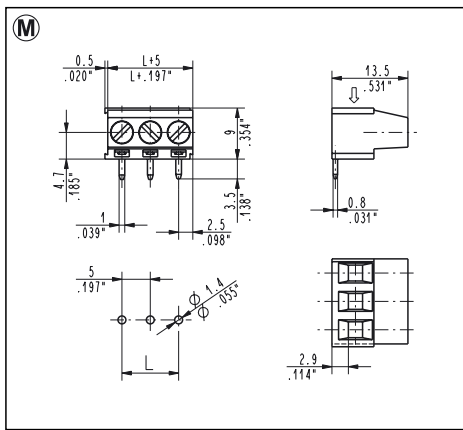
**MSG\_007** Straight, Side Entry  
7.62 mm / .300" Pitch Weight per pole: 1.45 g

Poles	STD Code	L [mm]	L [inch]	Pcs/pack.	W [kg]
02	MSG02007	7.62	0.300	300	0.87
03	MSG03007	15.24	0.600	200	0.87



**MSG\_006** Straight, Side Entry  
10.16 mm / .400" Pitch Weight per pole: 1.48 g

Poles	STD Code	L [mm]	L [inch]	Pcs/pack.	W [kg]
02	MSG02006	10.16	0.400	300	0.89
03	MSG03006	20.32	0.800	175	0.78
04	MSG04006	30.48	1.200	125	0.74
05	MSG05006	40.64	1.600	100	0.74
06	MSG06006	50.80	2.000	75	0.66
07	MSG07006	60.96	2.400	75	0.78
08	MSG08006	71.12	2.800	75	0.89
09	MSG09006	81.28	3.200	75	1.00
10	MSG10006	91.44	3.600	50	0.74
11	MSG11006	101.60	4.000	50	0.81
12	MSG12006	111.76	4.400	50	0.89
13	MSG13006	121.92	4.800	50	0.96



**MSG\_091** 90°, Top Entry  
5 mm / .197" Pitch Weight per pole: 1.32 g

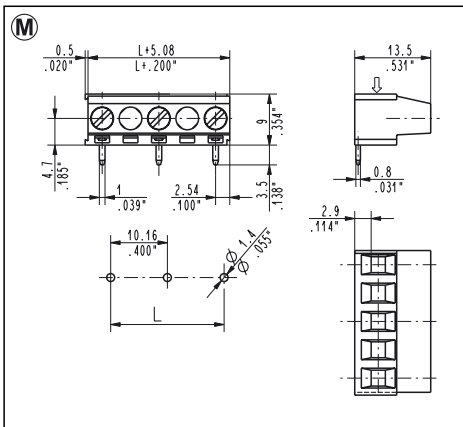
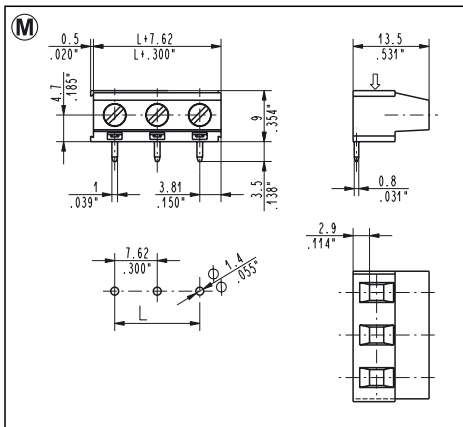
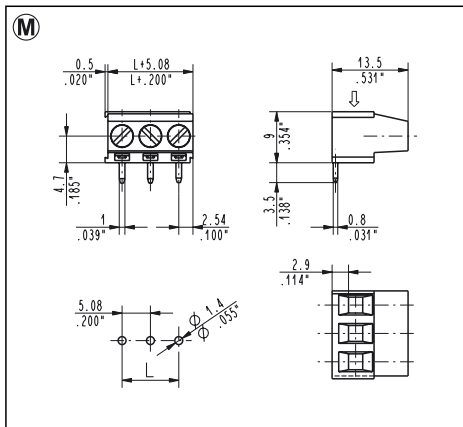
Poles	STD Code	L [mm]	L [inch]	Pcs/pack.	W [kg]
02	MSG02091	5.00	0.197	900	2.38
03	MSG03091	10.00	0.394	600	2.38
04	MSG04091	15.00	0.591	400	2.11
05	MSG05091	20.00	0.787	350	2.31
06	MSG06091	25.00	0.984	300	2.38
07	MSG07091	30.00	1.181	250	2.31
08	MSG08091	35.00	1.378	200	2.11
09	MSG09091	40.00	1.575	175	2.08
10	MSG10091	45.00	1.772	175	2.31
11	MSG11091	50.00	1.969	150	2.18
12	MSG12091	55.00	2.165	150	2.38
13	MSG13091	60.00	2.362	75	1.29
14	MSG14091	65.00	2.559	75	1.39
15	MSG15091	70.00	2.756	75	1.49
16	MSG16091	75.00	2.953	75	1.58
17	MSG17091	80.00	3.150	75	1.68
18	MSG18091	85.00	3.346	75	1.78
19	MSG19091	90.00	3.543	50	1.25
20	MSG20091	95.00	3.740	50	1.32
21	MSG21091	100.00	3.937	50	1.39
22	MSG22091	105.00	4.134	50	1.45
23	MSG23091	110.00	4.331	50	1.52
24	MSG24091	115.00	4.528	50	1.58
25	MSG25091	120.00	4.724	50	1.65

**MSG\_093** 90°, Top Entry  
7.5 mm / .295" Pitch Weight per pole: 1.50 g

Poles	STD Code	L [mm]	L [inch]	Pcs/pack.	W [kg]
02	MSG02093	7.50	0.295	300	0.90
03	MSG03093	15.00	0.591	200	0.90
04	MSG04093	22.50	0.886	150	0.90
05	MSG05093	30.00	1.181	100	0.75

**MSG\_092** 90°, Top Entry  
10 mm / .394" Pitch Weight per pole: 1.52 g

Poles	STD Code	L [mm]	L [inch]	Pcs/pack.	W [kg]
02	MSG02092	10.00	0.394	300	0.91
03	MSG03092	20.00	0.787	175	0.80
04	MSG04092	30.00	1.181	125	0.76
05	MSG05092	40.00	1.575	100	0.76
06	MSG06092	50.00	1.969	75	0.68
07	MSG07092	60.00	2.362	75	0.80
08	MSG08092	70.00	2.756	75	0.91
09	MSG09092	80.00	3.150	75	1.02
10	MSG10092	90.00	3.543	50	0.76
11	MSG11092	100.00	3.937	50	0.84
12	MSG12092	110.00	4.331	50	0.91
13	MSG13092	120.00	4.724	50	0.99



**MSG\_095** 90°, Top Entry  
5.08 mm / .200" Pitch Weight per pole: 1.32 g

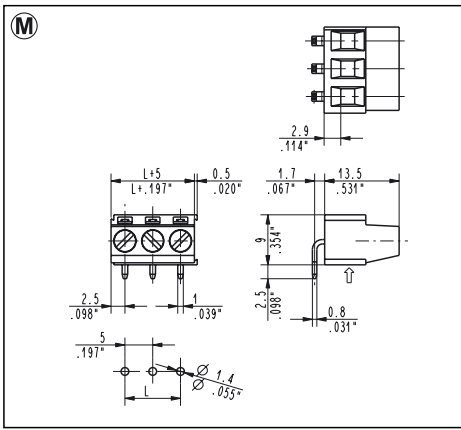
Poles	STD Code	L [mm]	L [inch]	Pcs/pack.	W [kg]
02	MSG02095	5.08	0.200	900	2.38
03	MSG03095	10.16	0.400	600	2.38
04	MSG04095	15.24	0.600	400	2.11
05	MSG05095	20.32	0.800	350	2.31
06	MSG06095	25.40	1.000	300	2.38
07	MSG07095	30.48	1.200	250	2.31
08	MSG08095	35.56	1.400	200	2.11
09	MSG09095	40.64	1.600	175	2.08
10	MSG10095	45.72	1.800	175	2.31
11	MSG11095	50.80	2.000	150	2.18
12	MSG12095	55.88	2.200	150	2.38
13	MSG13095	60.96	2.400	75	1.29
14	MSG14095	66.04	2.600	75	1.39
15	MSG15095	71.12	2.800	75	1.49
16	MSG16095	76.20	3.000	75	1.58
17	MSG17095	81.28	3.200	75	1.68
18	MSG18095	86.36	3.400	75	1.78
19	MSG19095	91.44	3.600	50	1.25
20	MSG20095	96.52	3.800	50	1.32
21	MSG21095	101.60	4.000	50	1.39
22	MSG22095	106.68	4.200	50	1.45
23	MSG23095	111.76	4.400	50	1.52
24	MSG24095	116.84	4.600	50	1.58
25	MSG25095	121.92	4.800	50	1.65

**MSG\_097** 90°, Top Entry  
7.62 mm / .300" Pitch Weight per pole: 1.50 g

Poles	STD Code	L [mm]	L [inch]	Pcs/pack.	W [kg]
02	MSG02097	7.62	0.300	300	0.90
03	MSG03097	15.24	0.600	200	0.90

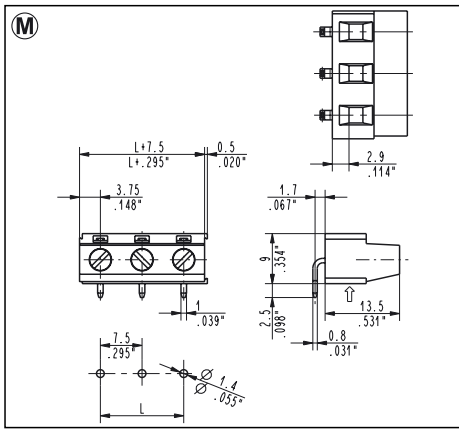
**MSG\_096** 90°, Top Entry  
10.16 mm / .400" Pitch Weight per pole: 1.52 g

Poles	STD Code	L [mm]	L [inch]	Pcs/pack.	W [kg]
02	MSG02096	10.16	0.400	300	0.91
03	MSG03096	20.32	0.800	175	0.80
04	MSG04096	30.48	1.200	125	0.76
05	MSG05096	40.64	1.600	100	0.76
06	MSG06096	50.80	2.000	75	0.68
07	MSG07096	60.96	2.400	75	0.80
08	MSG08096	71.12	2.800	75	0.91
09	MSG09096	81.28	3.200	75	1.02
10	MSG10096	91.44	3.600	50	0.76
11	MSG11096	101.60	4.000	50	0.84
12	MSG12096	111.76	4.400	50	0.91
13	MSG13096	121.92	4.800	50	0.99



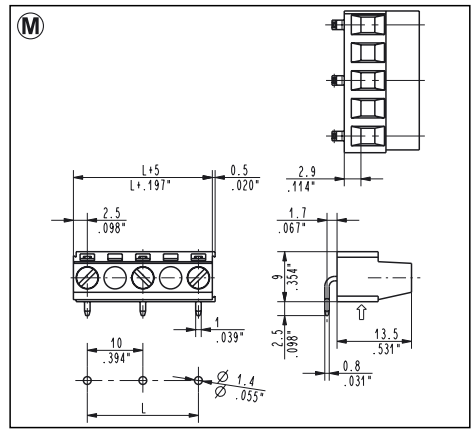
**MSG\_051**  
5 mm / .197" Pitch  
270°, Bottom Entry  
Weight per pole: 1.32 g

Poles	STD Code	L [mm]	L [inch]	Pcs/pack.	W [kg]
02	MSG02051	5.00	0.197	900	2.38
03	MSG03051	10.00	0.394	600	2.38
04	MSG04051	15.00	0.591	400	2.11
05	MSG05051	20.00	0.787	350	2.31
06	MSG06051	25.00	0.984	300	2.38
07	MSG07051	30.00	1.181	250	2.31
08	MSG08051	35.00	1.378	200	2.11
09	MSG09051	40.00	1.575	175	2.08
10	MSG10051	45.00	1.772	175	2.31
11	MSG11051	50.00	1.969	150	2.18
12	MSG12051	55.00	2.165	150	2.38
13	MSG13051	60.00	2.362	75	1.29
14	MSG14051	65.00	2.559	75	1.39
15	MSG15051	70.00	2.756	75	1.49
16	MSG16051	75.00	2.953	75	1.58
17	MSG17051	80.00	3.150	75	1.68
18	MSG18051	85.00	3.346	75	1.78
19	MSG19051	90.00	3.543	50	1.25
20	MSG20051	95.00	3.740	50	1.32
21	MSG21051	100.00	3.937	50	1.39
22	MSG22051	105.00	4.134	50	1.45
23	MSG23051	110.00	4.331	50	1.52
24	MSG24051	115.00	4.528	50	1.58
25	MSG25051	120.00	4.724	50	1.65



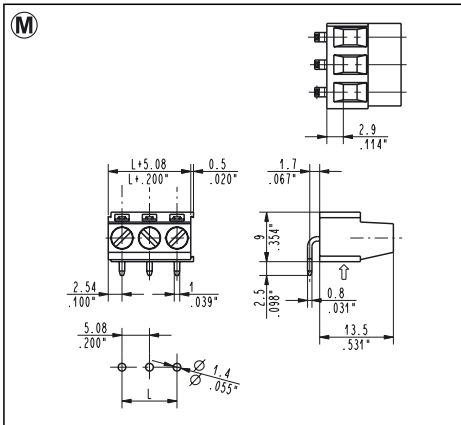
**MSG\_053**  
7.5 mm / .295" Pitch  
270°, Bottom Entry  
Weight per pole: 1.50 g

Poles	STD Code	L [mm]	L [inch]	Pcs/pack.	W [kg]
02	MSG02053	7.50	0.295	300	0.90
03	MSG03053	15.00	0.591	200	0.90
04	MSG04053	22.50	0.886	150	0.90
05	MSG05053	30.00	1.181	100	0.75



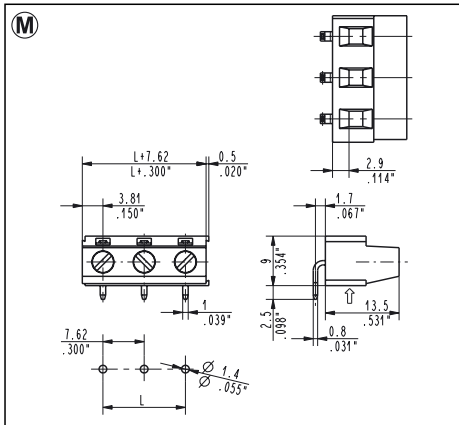
**MSG\_052**  
10 mm / .394" Pitch  
270°, Bottom Entry  
Weight per pole: 1.48 g

Poles	STD Code	L [mm]	L [inch]	Pcs/pack.	W [kg]
02	MSG02052	10.00	0.394	300	0.91
03	MSG03052	20.00	0.787	175	0.80
04	MSG04052	30.00	1.181	125	0.76
05	MSG05052	40.00	1.575	100	0.76
06	MSG06052	50.00	1.969	75	0.68
07	MSG07052	60.00	2.362	75	0.80
08	MSG08052	70.00	2.756	75	0.91
09	MSG09052	80.00	3.150	75	1.02
10	MSG10052	90.00	3.543	50	0.76
11	MSG11052	100.00	3.937	50	0.84
12	MSG12052	110.00	4.331	50	0.91
13	MSG13052	120.00	4.724	50	0.99



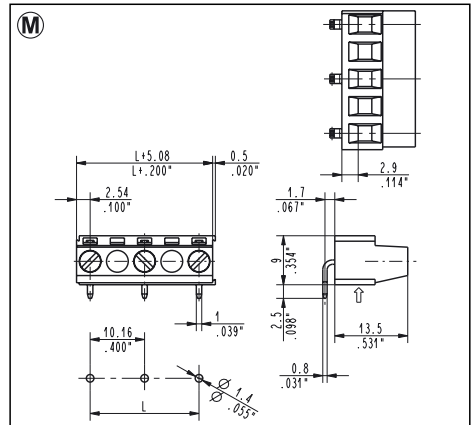
**MSG\_055**  
5.08 mm / .200" Pitch  
270°, Bottom Entry  
Weight per pole: 1.32 g

Poles	STD Code	L [mm]	L [inch]	Pcs/pack.	W [kg]
02	MSG02055	5.08	0.200	900	2.38
03	MSG03055	10.16	0.400	600	2.38
04	MSG04055	15.24	0.600	400	2.11
05	MSG05055	20.32	0.800	350	2.31
06	MSG06055	25.40	1.000	300	2.38
07	MSG07055	30.48	1.200	250	2.31
08	MSG08055	35.56	1.400	200	2.11
09	MSG09055	40.64	1.600	175	2.08
10	MSG10055	45.72	1.800	175	2.31
11	MSG11055	50.80	2.000	150	2.18
12	MSG12055	55.88	2.200	150	2.38
13	MSG13055	60.96	2.400	75	1.29
14	MSG14055	66.04	2.600	75	1.39
15	MSG15055	71.12	2.800	75	1.49
16	MSG16055	76.20	3.000	75	1.58
17	MSG17055	81.28	3.200	75	1.68
18	MSG18055	86.36	3.400	75	1.78
19	MSG19055	91.44	3.600	50	1.25
20	MSG20055	96.52	3.800	50	1.32
21	MSG21055	101.60	4.000	50	1.39
22	MSG22055	106.68	4.200	50	1.45
23	MSG23055	111.76	4.400	50	1.52
24	MSG24055	116.84	4.600	50	1.58
25	MSG25055	121.92	4.800	50	1.65



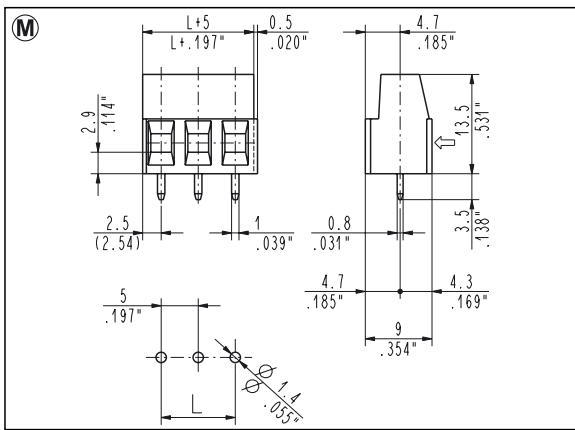
**MSG\_057**  
7.62 mm / .300" Pitch  
270°, Bottom Entry  
Weight per pole: 1.50 g

Poles	STD Code	L [mm]	L [inch]	Pcs/pack.	W [kg]
02	MSG02057	7.62	0.300	300	0.90
03	MSG03057	15.24	0.600	200	0.90



**MSG\_056**  
10.16 mm / .400" Pitch  
270°, Bottom Entry  
Weight per pole: 1.52 g

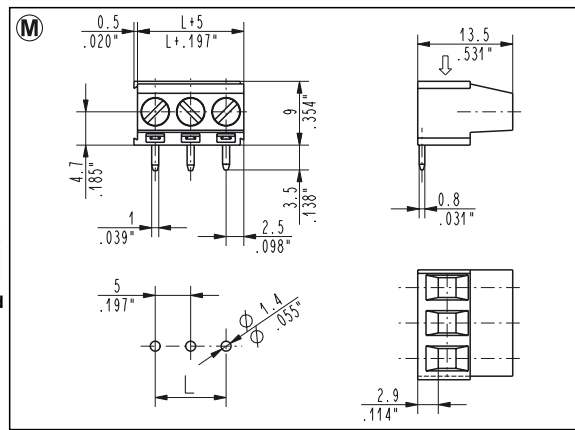
Poles	STD Code	L [mm]	L [inch]	Pcs/pack.	W [kg]
02	MSG02056	10.16	0.400	300	0.91
03	MSG03056	20.32	0.800	175	0.80
04	MSG04056	30.48	1.200	125	0.76
05	MSG05056	40.64	1.600	100	0.76
06	MSG06056	50.80	2.000	75	0.68
07	MSG07056	60.96	2.400	75	0.80
08	MSG08056	71.12	2.800	75	0.91
09	MSG09056	81.28	3.200	75	1.02
10	MSG10056	91.44	3.600	50	0.76
11	MSG11056	101.60	4.000	50	0.84
12	MSG12056	111.76	4.400	50	0.91
13	MSG13056	121.92	4.800	50	0.99



Short Circuited

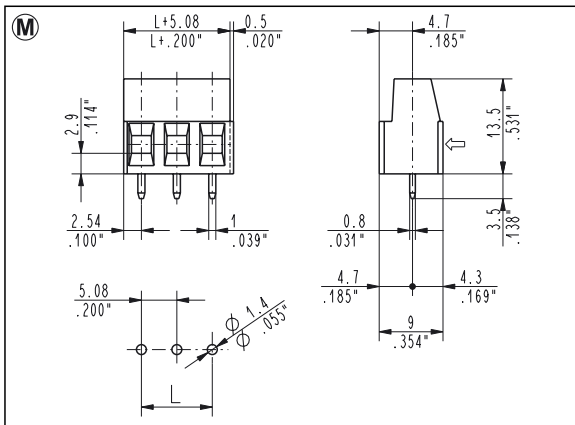
**MSG\_001 - 000C Short Circuited Straight, Side Entry**  
5 mm / .197" Pitch Weight per pole: 1.25 g

Poles	STD Code	L [mm]	L [inch]	Pcs/pack.	W [kg]
02	MSG02001-000C	5.00	0.197	900	2.25
03	MSG03001-000C	10.00	0.394	600	2.25



**MSG\_091 - 000C Short Circuited 90°, Top Entry**  
5 mm / .197" Pitch Weight per pole: 1.26 g

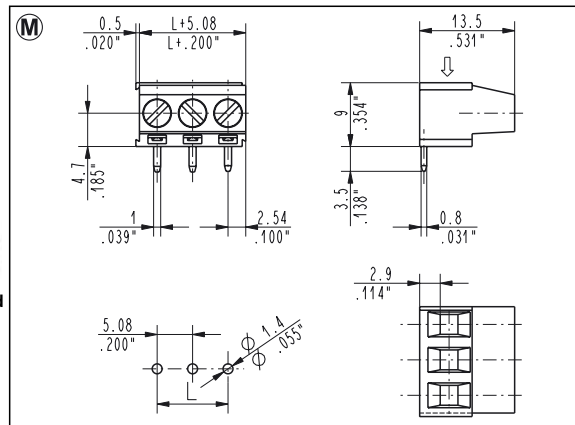
Poles	STD Code	L [mm]	L [inch]	Pcs/pack.	W [kg]
02	MSG02091-000C	5.00	0.197	900	2.26
03	MSG03091-000C	10.00	0.394	600	2.26



Short Circuited

**MSG\_005 - 000C Short Circuited Straight, Side Entry**  
5.08 mm / .200" Pitch Weight per pole: 1.25 g

Poles	STD Code	L [mm]	L [inch]	Pcs/pack.	W [kg]
02	MSG02005-000C	5.08	0.200	900	2.25
03	MSG03005-000C	10.16	0.400	600	2.25



**MSG\_095 - 000C Short Circuited 90°, Top Entry**  
5.08 mm / .200" Pitch Weight per pole: 1.27 g

Poles	STD Code	L [mm]	L [inch]	Pcs/pack.	W [kg]
02	MSG02095-000C	5.08	0.200	900	2.28
03	MSG03095-000C	10.16	0.400	600	2.28

