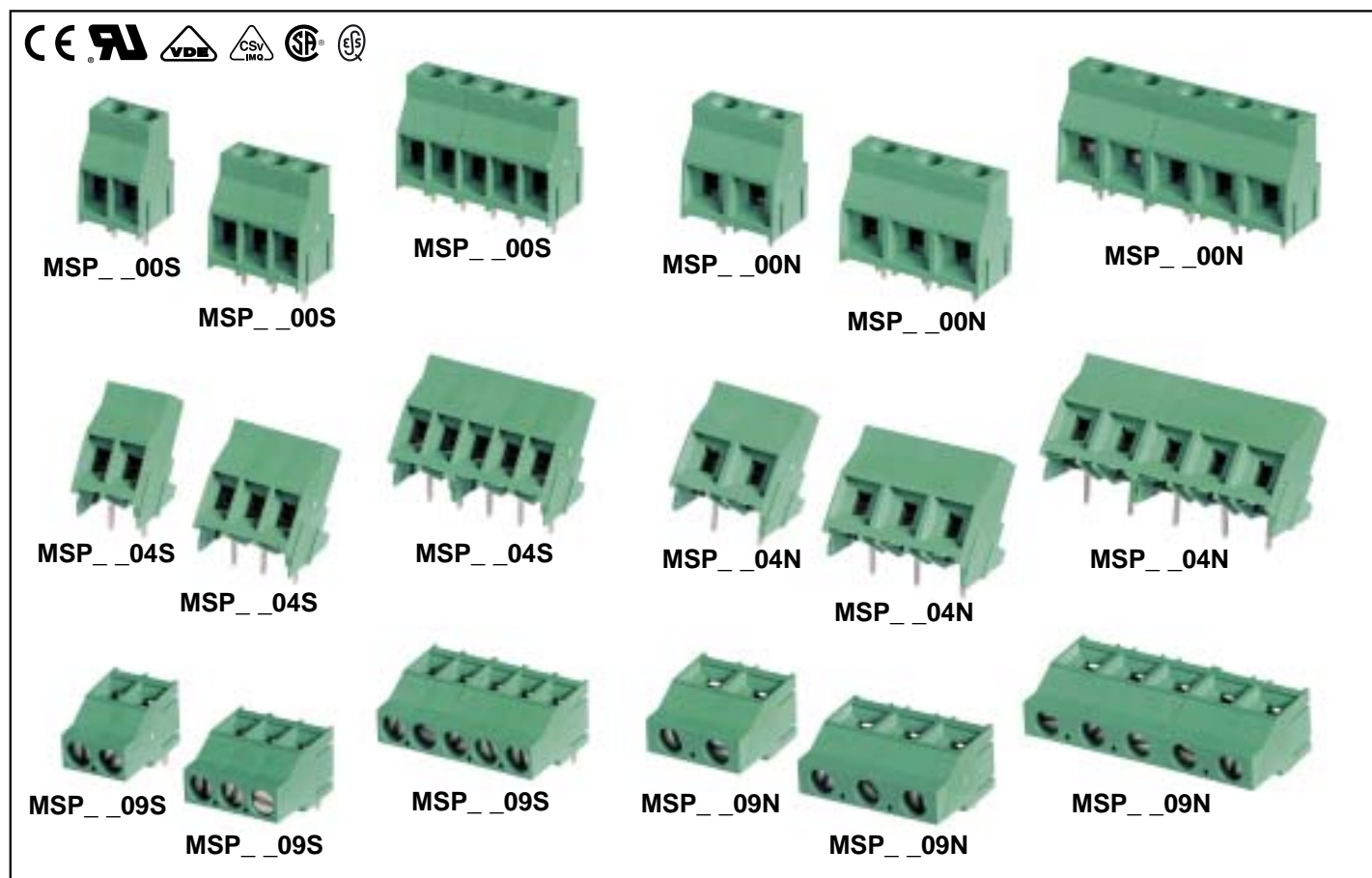




Dimensional Class: HIGH
Standard Color: GREEN
Height: .846 in (21.5 mm) Straight and 35° - .492 in (12.5 mm) 90°
Clamp Opening Size: .150 x .126 in (3.8 x 3.2 mm)
Wire Diameter: max. .126 in (8.19 mm²)
Versions: Modular with Dovetails
Single Mold Poles: 2 and 3
Imperial Pitches: .250 in (6.35 mm), .375 in (9.52 mm)

Classe Dimensionale: ALTA
Colore Standard: VERDE
Altezza: 21,5 mm Diritto e 35° - 12,5 mm 90°
Apertura Introduzione Filo: 3,8 x 3,2 mm
Diametro Filo Inseribile: max. 3,2 mm (8,19 mm²)
Versioni: Modulare con incastro a coda di rondine
Vie Monolitiche: 2 e 3
Passi in Pollici: 6,35 mm, 9,52 mm

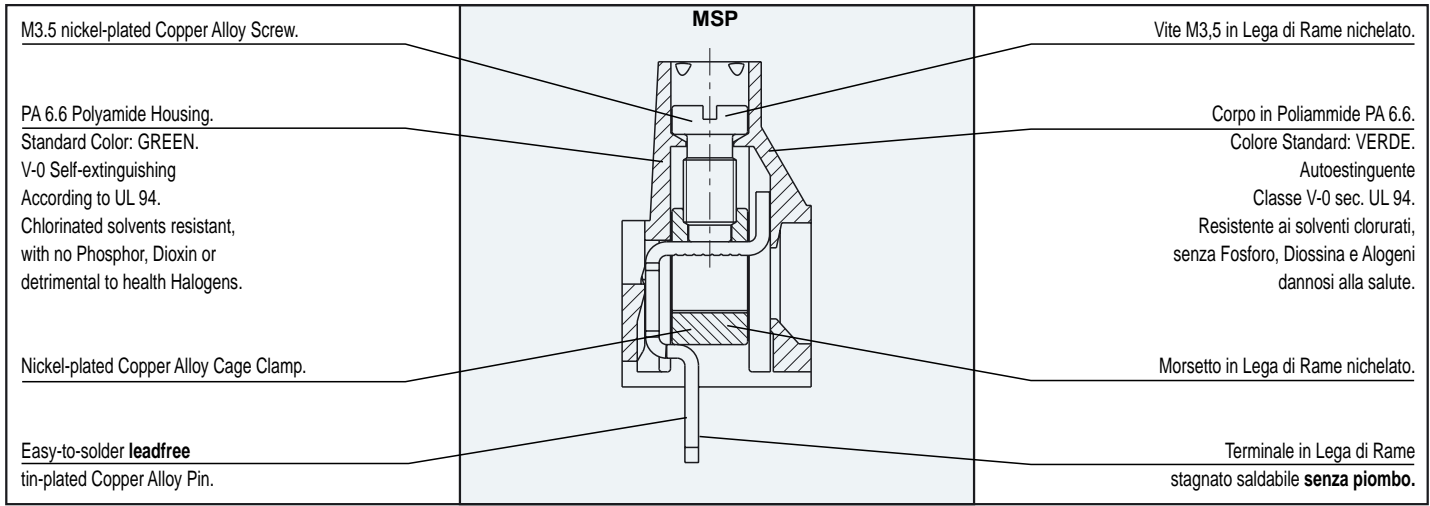


The modular MSP terminal block Series for printed circuit boards satisfies the user's mounting needs with the following possibilities:

- using individual single mold 2 and 3 poles terminal blocks;
- combining single mold 2 and 3 poles terminal blocks to obtain any number of poles; all MSP products, including single mold versions, have dovetail capabilities;
- minimizing the stock by storing only some base terminal blocks (ex. 2 and 3 poles) to enable combinations as described above;
- being included in a custom Kit package to simplify the product management (part-number reduction), to minimize the stock, to improve the assembly and to reduce production errors.

La morsettiere modulare Serie MSP per circuiti stampati soddisfa le esigenze di montaggio dell'utilizzatore; infatti è possibile:

- utilizzare singolarmente le morsettiere base monolitiche da 2 e 3 vie;
- comporre le morsettiere base monolitiche da 2 e 3 vie per ottenere qualsiasi numero di vie;
- gestire uno stoccaggio minimo di morsettiere base (es. 2 e 3 vie) per ottenere quanto sopra;
- utilizzare le confezioni Kit che permettono una semplificazione della gestione del prodotto (riduzione dei part-number), del magazzino, dell'assemblaggio, nonché una riduzione dei rischi d'errore.



Mechanical Characteristics

Recommended tightening torque:	0.8 Nm (UL)*
PCB thickness:	max. .157 in (max. 4 mm)
PCB hole diameter:	min. .051 in (min. 1.3 mm)
Stripping length:	.28 ÷ .31 in (7 ÷ 8 mm)
Operating temperature range:	-40 °F ÷ +230 °F (-40 °C ÷ +110 °C)
Climatic category:	40/110/21 According to IEC 68-1

Electrical Characteristics

Solid wire section:	30±10 AWG - 0.05±6 mm ² (UL, CSA)*
Stranded wire section:	30±10 AWG - 0.05±4 mm ² (UL, CSA)*
Rated voltage:	.250 in (6.35 mm) pitch 450 V (UL, CSA, IMQ, VDE)* .375 in (9.52 mm) pitch 750 V (IMQ, VDE)*
Rated current:	41 A (IMQ)*
Contact resistance:	<15 mΩ
Insulation resistance:	>10 ⁹ Ω (500V DC)

*All the a.m. data refer to the highest values amongst the certificated ones (). **V** voltage, **I** current values and tightening torque are related to the norms to be applied to the product and to its use.

Caratteristiche Meccaniche

Coppia di serraggio consigliata:	0,8 Nm (UL)*
Spessore circuito stampato:	max. 4 mm
Diametro fori circuito stampato:	min. 1,3 mm
Lunghezza di spellatura:	7 ÷ 8 mm
Temperature di funzionamento:	-40 °C ÷ +110 °C
Categoria climatica:	40/110/21 Secondo IEC 68-1

Caratteristiche Elettriche

Conduttore connettibile rigido:	0,05±6 mm ² - 30±10 AWG (UL, CSA)*
Conduttore connettibile flessibile:	0,05±4 mm ² - 30±10 AWG (UL, CSA)*
Tensione nominale:	passo 6,35 mm 450 V (UL, CSA, IMQ, VDE)* passo 9,52 mm 750 V (IMQ, VDE)*
Corrente nominale:	41 A (IMQ)*
Resistenza di contatto:	<15 mΩ
Resistenza di isolamento:	>10 ⁹ Ω (500V CC)

*Per ogni caratteristica, i dati riportati si riferiscono ai massimi valori fra quelli certificati (). I valori di tensione **V** corrente **I** e, coppia di serraggio sono legati alle norme applicabili al prodotto ed al tipo di utilizzo.

Approvals

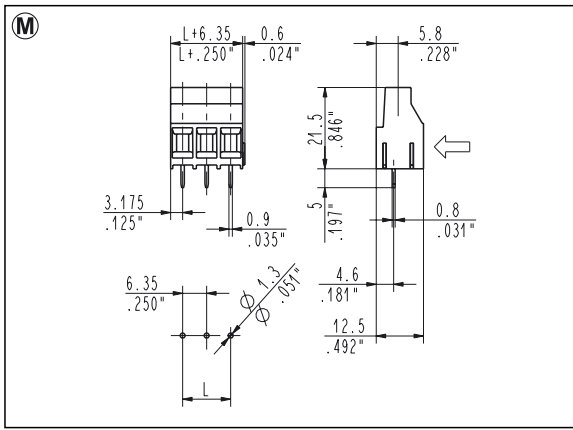
(see also "Certifications", page 22)

VDE:	Pending
	450 V - 32 A - T 110 - 4 mm ² for 6.35 mm pitch 750 V - 32 A - T 110 - 4 mm ² for 9.52 mm pitch
IMQ:	Certificate with Surveillance IMQ CSv CA02.00899
ESS:	450 V - T 110 - 41 A - 6 mm ² solid (32 A - 4 mm ² stranded) for 6.35 mm pitch 750 V - T 110 - 41 A - 6 mm ² solid (32 A - 4 mm ² stranded) for 9.52 mm pitch
CSA:	File LR 102896-1
	450 V - 32 A - 30±10 AWG for 6.35 mm pitch 600 V - 32 A - 30±10 AWG for 9.52 mm pitch
UL:	File E 167473
	300 V - 30 A - 30±10 AWG for 6.35 mm pitch 600 V - 30 A - 30±10 AWG for 9.52 mm pitch Application values for end-use equipment have to be in accordance to UL norms and applicable to it.

Certificazioni

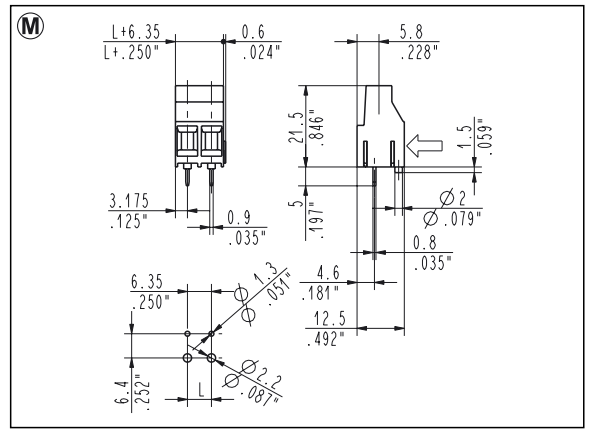
(vedi anche "Certificazioni", pag. 22)

VDE:	Pending
	450 V - 32 A - T 110 - 4 mm ² per passo 6,35 mm 750 V - 32 A - T 110 - 4 mm ² per passo 9,52 mm
IMQ:	Certificato con Sorveglianza IMQ CSv CA02.00899
ESS:	450 V - T 110 - 41 A - 6 mm ² rigido (32 A - 4 mm ² flessibile) per passo 6,35 mm 750 V - T 110 - 41 A - 6 mm ² rigido (32 A - 4 mm ² flessibile) per passo 9,52 mm
CSA:	File LR 102896-1
	450 V - 32 A - 30±10 AWG per passo 6,35 mm 600 V - 32 A - 30±10 AWG per passo 9,52 mm
UL:	File E 167473
	300 V - 30 A - 30±10 AWG per passo 6,35 mm 600 V - 30 A - 30±10 AWG per passo 9,52 mm I valori di utilizzo per l'apparecchiatura finale devono essere conformi alle norme UL ad essa applicabili.



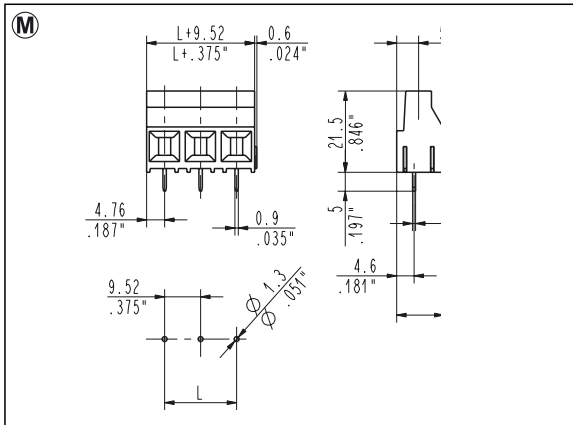
MSP_00S Straight, Side Entry
6.35 mm / .250" Pitch Weight per pole: 3.08 g

Poles	STD Code	L [mm]	L [inch]	Pcs/pack.	W [kg]
02	MSP0200S	6.35	0.250	200	1.23
03	MSP0300S	12.70	0.500	150	1.38



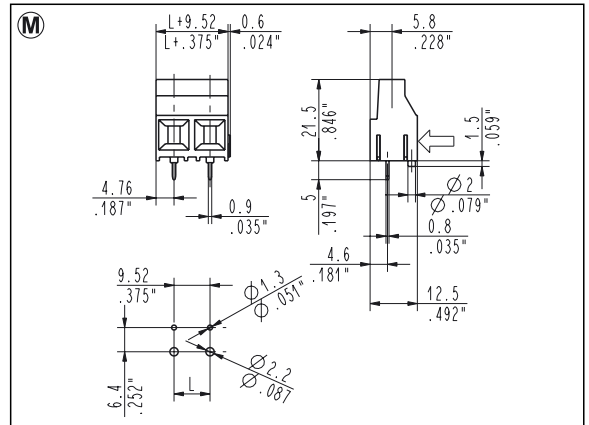
MSP_00S - 0000P Straight, Side Entry
6.35 mm / .250" Pitch Weight per pole: 3.08 g

Poles	STD Code	L [mm]	L [inch]	Pcs/pack.	W [kg]
02	MSP0200S-0000P	6.35	0.250	200	1.23
03	MSP0300S-0000P	12.70	0.500	150	1.38



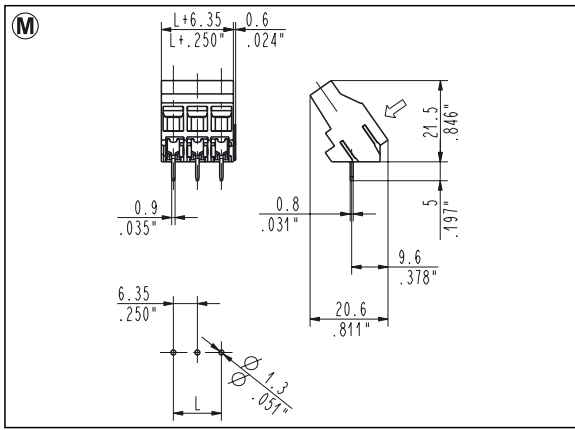
MSP_00N Straight, Side Entry
9.52 mm / .375" Pitch Weight per pole: 3.53 g

Poles	STD Code	L [mm]	L [inch]	Pcs/pack.	W [kg]
02	MSP0200N	9.52	0.375	150	1.06
03	MSP0300N	19.04	0.750	100	1.06



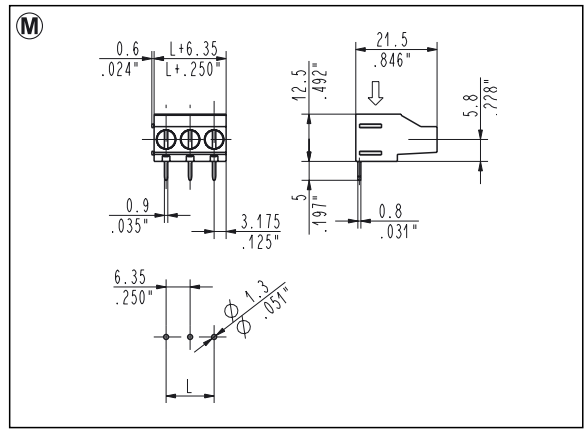
MSP_00N - 0000P Straight, Side Entry
9.52 mm / .375" Pitch Weight per pole: 3.53 g

Poles	STD Code	L [mm]	L [inch]	Pcs/pack.	W [kg]
02	MSP0200N	9.52	0.375	150	1.06
03	MSP0300N	19.04	0.750	100	1.06



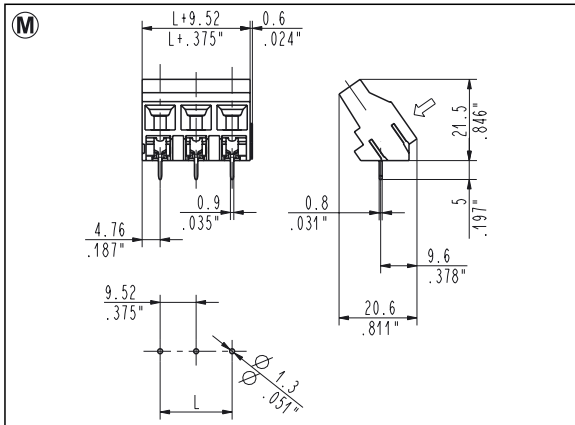
MSP_04S
6.35 mm / .250" Pitch **35°, Angled Entry**
Weight per pole: 3.23 g

Poles	STD Code	L [mm]	L [inch]	Pcs/pack.	W [kg]
02	MSP0204S	6.35	0.250	200	1.29
03	MSP0304S	12.70	0.500	125	1.21



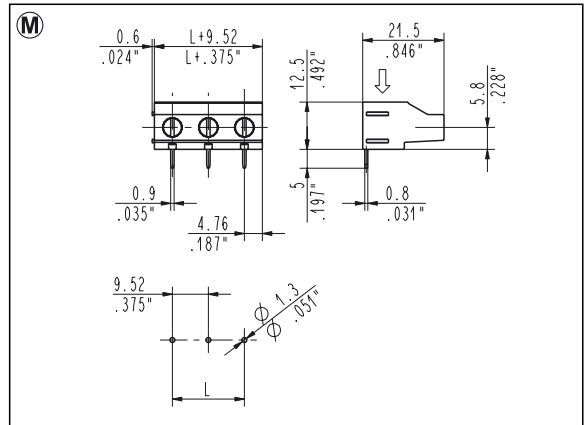
MSP_09S
6.35 mm / .250" Pitch **90°, Top Entry**
Weight per pole: 3.08 g

Poles	STD Code	L [mm]	L [inch]	Pcs/pack.	W [kg]
02	MSP0209S	6.35	0.250	200	1.23
03	MSP0309S	12.70	0.500	150	1.38



MSP_04N
9.52 mm / .375" Pitch **35°, Angled Entry**
Weight per pole: 3.64 g

Poles	STD Code	L [mm]	L [inch]	Pcs/pack.	W [kg]
02	MSP0204N	9.52	0.375	125	0.91
03	MSP0304N	19.04	0.750	75	0.82



MSP_09N
9.52 mm / .375" Pitch **90°, Top Entry**
Weight per pole: 3.53 g

Poles	STD Code	L [mm]	L [inch]	Pcs/pack.	W [kg]
02	MSP0209N	9.52	0.375	150	1.06
03	MSP0309N	19.04	0.750	100	1.06