

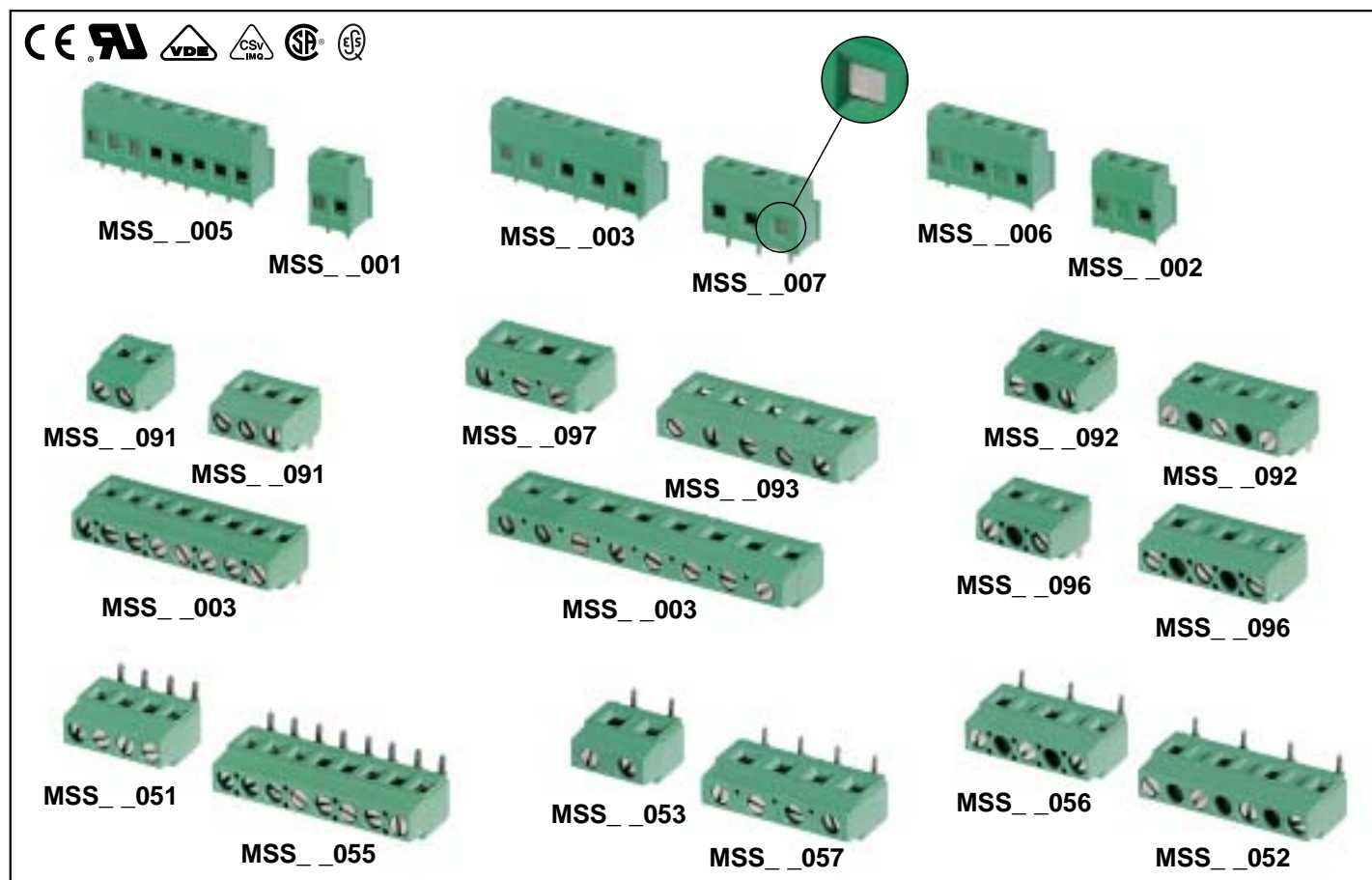


Dimensional Class: MEDIUM
Standard Color: GREEN
Height: .598 in (15.2 mm) Straight - .354 in (9.0 mm) 90° and 270°
Clamp Opening Size: .098 x .087 in (2.5 x 2.3 mm)
Wire Diameter: max. .087 in (3.80 mm)
Versions: Modular with Dovetails
Single Mold Poles: from 2 to 25
Metric Pitches: .197 in (5 mm), .295 in (7.5 mm), .394 in (10 mm)
Imperial Pitches: .2 in (5.08 mm), .3 in (7.62 mm), .4 in (10.16 mm)

Classe Dimensionale: MEDIA
Colore Standard: VERDE
Altezza: 15,2 mm Diritto - 9,0 mm 90° e 270°
Apertura Introduzione Filo: 2,5 x 2,3 mm
Diametro Filo Inseribile: max. 2,2 mm (3,80 mm)
Versioni: Modulare con incastro a coda di rondine
Vie Monolitiche: da 2 a 25
Passi Metrici: 5 mm, 7,5 mm, 10 mm
Passi in Pollici: 5,08 mm, 7,62 mm, 10,16 mm

Zero Gap; when the Cage Clamp is closed

Gap Zero; quando il Morsetto è chiuso

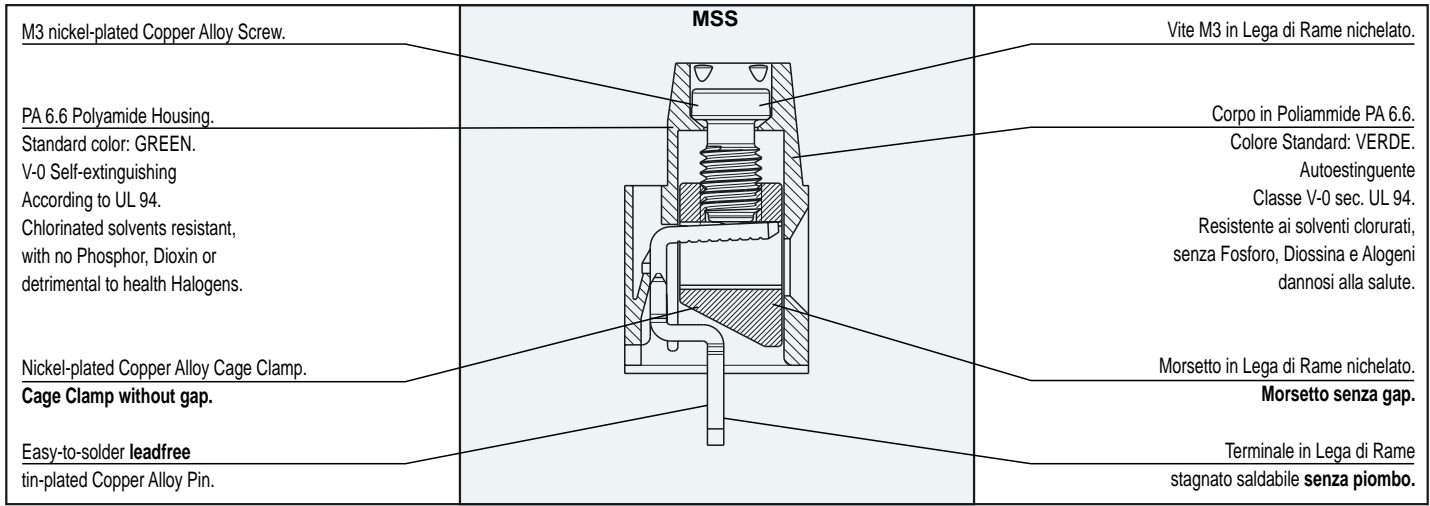


The modular MSS terminal block Series for printed circuit boards satisfies the user's mounting needs with the following possibilities:

- using individual single mold terminal blocks from 2 to 25 poles;
- combining single mold terminal blocks from 2 to 25 poles to obtain any number of poles; all MSS products, including single mold versions, have dovetail capabilities;
- minimizing the stock by storing only some base terminal blocks (ex. 2 - 3... 25 poles) to enable combinations as described above;
- being included in a custom Kit package to simplify the product management (part-numbers reduction), to minimize the stock, to improve the assembly and to reduce production errors.

La morsettiere modulare Serie MSS per circuiti stampati soddisfa le esigenze di montaggio dell'utilizzatore; infatti è possibile:

- utilizzare singolarmente le morsettiere base monolitiche da 2 a 25 vie;
- comporre le morsettiere base monolitiche da 2 a 25 vie per ottenere qualsiasi numero di vie;
- gestire uno stoccaggio minimo di morsettiere base (es. 2 - 3... 25 vie) per ottenere quanto sopra;
- utilizzare le confezioni Kit che permettono una semplificazione della gestione del prodotto (riduzione dei part-number), del magazzino, dell'assemblaggio, nonché una riduzione dei rischi d'errore.



Mechanical Characteristics

Recommended tightening torque:	0.8 Nm (UL)*
PCB thickness:	max. .110 in (max. 2.8 mm)
PCB hole diameter:	min. .055 in (min. 1.4 mm)
Stripping length:	.22 ÷ .26 in (5.5 ÷ 6.5 mm)
Operating temperature range:	-40 °F ÷ +230 °F (-40 °C ÷ +110 °C)
Climatic category:	40/110/21 According to IEC 68-1

Electrical Characteristics

Solid wire section:	30÷12 AWG - 0.05÷2.5 mm ² (UL, CSA)*
Stranded wire section:	30÷12 AWG - 0.05÷1.5 mm ² (UL, CSA)*
Rated voltage:	.197 in (5 mm) and .200 in (5.08 mm) pitch 300 V (UL, CSA)* .295 in (7.5 mm) and .300 in (7.62 mm) pitch 750 V (IMQ)* .394 in (10 mm) and .400 in (10.16 mm) pitch 750 V (IMQ)*
Rated current:	24 A (IMQ)*
Contact resistance:	<15 mΩ
Insulation resistance:	>10 ⁹ Ω (500V DC)

*All the a.m. data refer to the highest values amongst the certificated ones (). **V** voltage, **I** current values and tightening torque are related to the norms to be applied to the product and to its use.

Caratteristiche Meccaniche

Coppia di serraggio consigliata:	0,6 Nm (UL)*
Spessore circuito stampato:	max. 2,8 mm
Diámetro fori circuito stampato:	min. 1,4 mm
Lunghezza di spellatura:	5,5 ÷ 6,5 mm
Temperature di funzionamento:	-40 °C ÷ +110 °C
Categoria climatica:	40/110/21 Secondo IEC 68-1


Caratteristiche Elettriche


Conduttore connettabile rigido:	0,05÷2,5 mm ² - 30÷12 AWG (UL, CSA)*
Conduttore connettabile flessibile:	0,05÷1,5 mm ² - 30÷12 AWG (UL, CSA)*
Tensione nominale:	passo 5 mm e 5,08 mm 300 V (UL, CSA)* passo 7,5 mm e 7,62 mm 750 V (IMQ)* passo 10 mm e 10,16 mm 750 V (IMQ)*
Corrente nominale:	24 A (IMQ)*
Resistenza di contatto:	<15 mΩ
Resistenza di isolamento:	>10 ⁹ Ω (500V CC)


*Per ogni caratteristica, i dati riportati si riferiscono ai massimi valori fra quelli certificati (). I valori di tensione **V** corrente **I** e, coppia di serraggio sono legati alle norme applicabili al prodotto ed al tipo di utilizzo.


Approvals

(see also "Certifications", page 22)

VDE: Pending 
250 V - 17.5 A - T 110 - 1.5 mm² for 5 mm and 5.08 mm pitch
750 V - 17.5 A - T 110 - 1.5 mm² for 7.5 mm, 7.62 mm, 10 mm and 10.16 mm pitch


IMQ: **Certificate with Surveillance IMQ CSv EA022** 
ESS: 250 V - T 110 - 24 A - 2.5 mm² solid (17.5 A - 1.5 mm² stranded) for 5 mm and 5.08 mm pitch
750 V - T 110 - 24 A - 2.5 mm² solid (17.5 A - 1.5 mm² stranded)
for 7.5 mm, 7.62 mm, 10 mm and 10.16 mm pitch


CSA: **File LR 102896-1** 
300 V - 17.5 A - 30÷12 AWG for 5 mm and 5.08 mm pitch
450 V - 17.5 A - 30÷12 AWG for 7.5 mm and 7.62 mm pitch
600 V - 17.5 A - 30÷12 AWG for 10 mm and 10.16 mm pitch


UL: **File E 167473** 
300 V - 17.5 A (Factory Wiring), 15 A (Field Wiring) - 30÷12 AWG
for 5 mm, 5.08 mm, 7.5 mm and 7.62 mm pitch
600 V - 17.5 A (Factory Wiring), 15 A (Field Wiring) - 30÷12 AWG
for 10 mm and 10.16 mm pitch
Application values for end-use equipment have to be
in accordance to UL norms and applicable to it.


Certificazioni

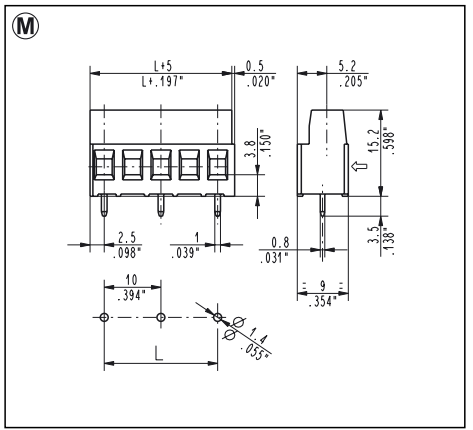
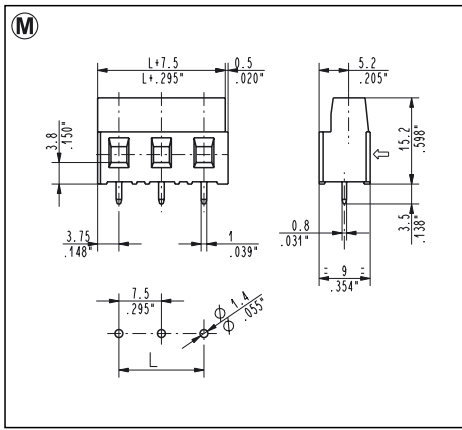
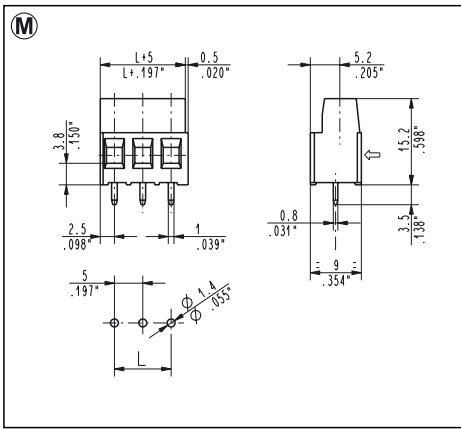
(vedi anche "Certificazioni", pag. 22)

VDE: Pending 
250 V - 17,5 A - T 110 - 1,5 mm² per passo 5 mm e 5,08 mm
750 V - 17,5 A - T 110 - 1,5 mm² per passo 7,5 mm, 7,62 mm, 10 mm e 10,16 mm

IMQ: **Certificato con Sorveglianza IMQ CSv EA022** 
ESS: 250 V - T 110 - 24 A - 2,5 mm² rigido (17,5 A - 1,5 mm² flessibile) per passo 5 mm e 5,08 mm
750 V - T 110 - 24 A - 2,5 mm² rigido (17,5 A - 1,5 mm² flessibile)
per passo 7,5 mm, 7,62 mm, 10 mm e 10,16 mm

CSA: **File LR 102896-1** 
300 V - 17,5 A - 30÷12 AWG per passo 5 mm, 5,08 mm
450 V - 17,5 A - 30÷12 AWG per passo 7,5 mm e 7,62 mm
600 V - 17,5 A - 30÷12 AWG per passo 10 mm e 10,16 mm

UL: **File E 167473** 
300 V - 17,5 A (Factory Wiring), 15 A (Field Wiring) - 30÷12 AWG
per passo 5 mm, 5,08 mm, 7,5 mm e 7,62 mm
600 V - 17,5 A (Factory Wiring), 15 A (Field Wiring) - 30÷12 AWG
per passo 10 mm e 10,16 mm
I valori di utilizzo per l'apparecchiatura finale
devono essere conformi alle norme UL ad essa applicabili.



MSS_001
5 mm / .197" Pitch
Straight, Side Entry
Weight per pole: 1.61 g

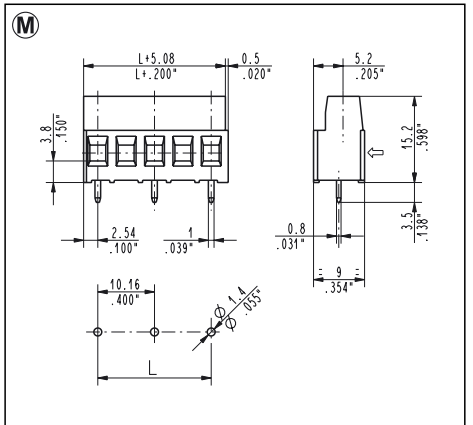
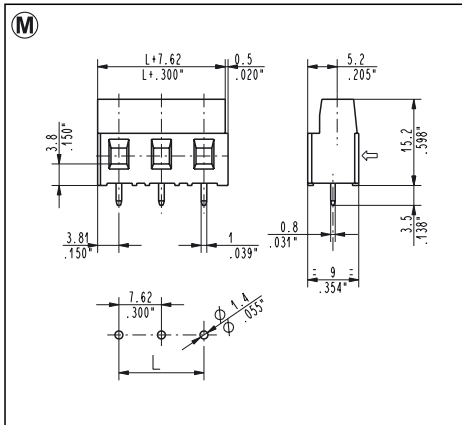
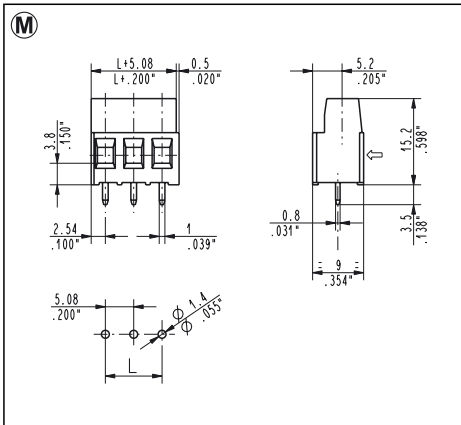
Poles	STD Code	L [mm]	L [inch]	Pcs/pack.	W [kg]
02	MSS02001	5.00	0.197	900	2.90
03	MSS03001	10.00	0.394	600	2.90
04	MSS04001	15.00	0.591	400	2.58
05	MSS05001	20.00	0.787	350	2.82
06	MSS06001	25.00	0.984	300	2.90
07	MSS07001	30.00	1.181	250	2.82
08	MSS08001	35.00	1.378	200	2.58
09	MSS09001	40.00	1.575	175	2.54
10	MSS10001	45.00	1.772	175	2.82
11	MSS11001	50.00	1.969	150	2.66
12	MSS12001	55.00	2.165	150	2.90
13	MSS13001	60.00	2.362	75	1.57
14	MSS14001	65.00	2.559	75	1.69
15	MSS15001	70.00	2.756	75	1.81
16	MSS16001	75.00	2.953	75	1.93
17	MSS17001	80.00	3.150	75	2.06
18	MSS18001	85.00	3.346	75	2.18
19	MSS19001	90.00	3.543	50	1.53
20	MSS20001	95.00	3.740	50	1.61
21	MSS21001	100.00	3.937	50	1.69
22	MSS22001	105.00	4.134	50	1.77
23	MSS23001	110.00	4.331	50	1.85
24	MSS24001	115.00	4.528	50	1.93
25	MSS25001	120.00	4.724	50	2.02

MSS_003
7.5 mm / .295" Pitch
Straight, Side Entry
Weight per pole: 1.78 g

Poles	STD Code	L [mm]	L [inch]	Pcs/pack.	W [kg]
02	MSS02003	7.50	0.295	300	1.07
03	MSS03003	15.00	0.591	200	1.07
04	MSS04003	22.50	0.886	150	1.07

MSS_002
10 mm / .394" Pitch
Straight, Side Entry
Weight per pole: 1.82 g

Poles	STD Code	L [mm]	L [inch]	Pcs/pack.	W [kg]
02	MSS02002	10.00	0.394	300	1.09
03	MSS03002	20.00	0.787	175	0.96
04	MSS04002	30.00	1.181	125	0.91
05	MSS05002	40.00	1.575	100	0.91
06	MSS06002	50.00	1.969	75	0.82
07	MSS07002	60.00	2.362	75	0.96
08	MSS08002	70.00	2.756	75	1.09
09	MSS09002	80.00	3.150	75	1.23
10	MSS10002	90.00	3.543	50	0.91
11	MSS11002	100.00	3.937	50	1.00
12	MSS12002	110.00	4.331	50	1.09
13	MSS13002	120.00	4.724	50	1.18



MSS_005
5.08 mm / .200" Pitch
Straight, Side Entry
Weight per pole: 1.61 g

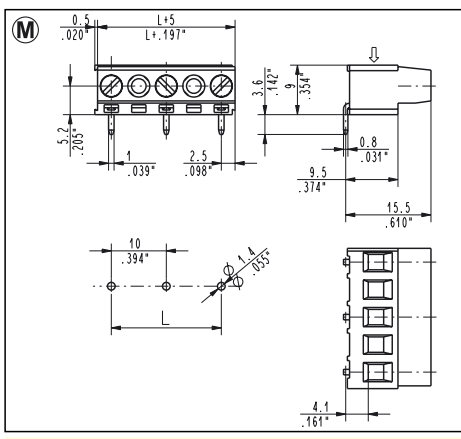
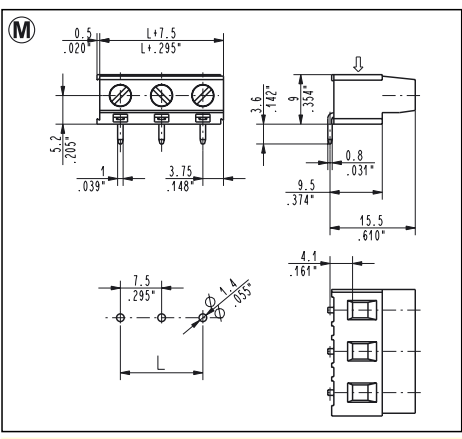
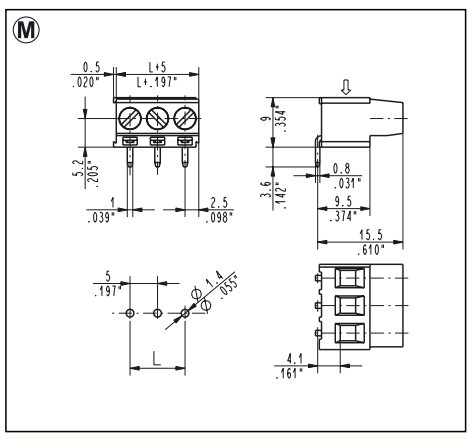
Poles	STD Code	L [mm]	L [inch]	Pcs/pack.	W [kg]
02	MSS02005	5.08	0.200	900	2.90
03	MSS03005	10.16	0.400	600	2.90
04	MSS04005	15.24	0.600	400	2.58
05	MSS05005	20.32	0.800	350	2.82
06	MSS06005	25.40	1.000	300	2.90
07	MSS07005	30.48	1.200	250	2.82
08	MSS08005	35.56	1.400	200	2.58
09	MSS09005	40.64	1.600	175	2.54
10	MSS10005	45.72	1.800	175	2.82
11	MSS11005	50.80	2.000	150	2.66
12	MSS12005	55.88	2.200	150	2.90
13	MSS13005	60.96	2.400	75	1.57
14	MSS14005	66.04	2.600	75	1.69
15	MSS15005	71.12	2.800	75	1.81
16	MSS16005	76.20	3.000	75	1.93
17	MSS17005	81.28	3.200	75	2.06
18	MSS18005	86.36	3.400	75	2.18
19	MSS19005	91.44	3.600	50	1.53
20	MSS20005	96.52	3.800	50	1.61
21	MSS21005	101.60	4.000	50	1.69
22	MSS22005	106.68	4.200	50	1.77
23	MSS23005	111.76	4.400	50	1.85
24	MSS24005	116.84	4.600	50	1.93
25	MSS25005	121.92	4.800	50	2.02

MSS_007
7.62 mm / .300" Pitch
Straight, Side Entry
Weight per pole: 1.78 g

Poles	STD Code	L [mm]	L [inch]	Pcs/pack.	W [kg]
02	MSS02007	7.62	0.300	300	1.07
03	MSS03007	15.24	0.600	200	1.07

MSS_006
10.16 mm / .400" Pitch
Straight, Side Entry
Weight per pole: 1.82 g

Poles	STD Code	L [mm]	L [inch]	Pcs/pack.	W [kg]
02	MSS02006	10.16	0.400	300	1.09
03	MSS03006	20.32	0.800	175	0.96
04	MSS04006	30.48	1.200	125	0.91
05	MSS05006	40.64	1.600	100	0.91
06	MSS06006	50.80	2.000	75	0.82
07	MSS07006	60.96	2.400	75	0.96
08	MSS08006	71.12	2.800	75	1.09
09	MSS09006	81.28	3.200	75	1.23
10	MSS10006	91.44	3.600	50	0.91
11	MSS11006	101.60	4.000	50	1.00
12	MSS12006	111.76	4.400	50	1.09
13	MSS13006	121.92	4.800	50	1.18



MSS_091
5 mm / .197" Pitch
Weight per pole: 1.61 g

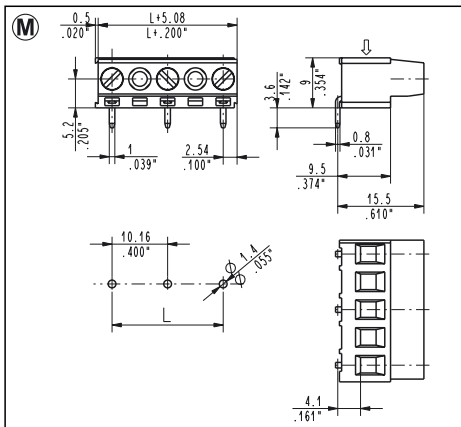
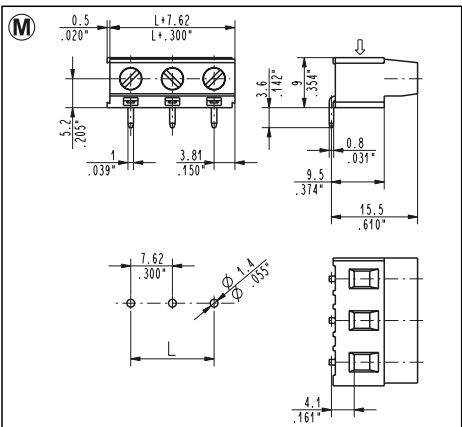
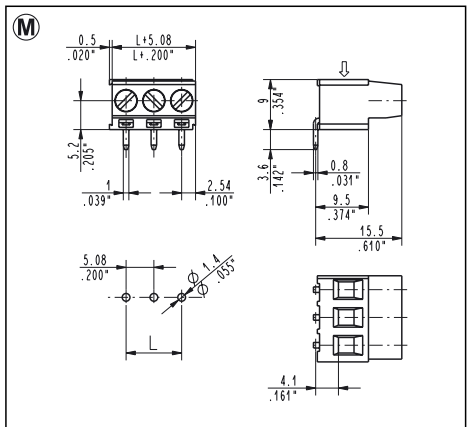
Poles	STD Code	L [mm]	L [inch]	Pcs/pack.	W [kg]
02	MSS02091	5.00	0.197	900	2.90
03	MSS03091	10.00	0.394	600	2.90
04	MSS04091	15.00	0.591	400	2.58
05	MSS05091	20.00	0.787	350	2.82
06	MSS06091	25.00	0.984	300	2.90
07	MSS07091	30.00	1.181	250	2.82
08	MSS08091	35.00	1.378	200	2.58
09	MSS09091	40.00	1.575	175	2.54
10	MSS10091	45.00	1.772	175	2.82
11	MSS11091	50.00	1.969	150	2.66
12	MSS12091	55.00	2.165	150	2.90
13	MSS13091	60.00	2.362	75	1.57
14	MSS14091	65.00	2.559	75	1.69
15	MSS15091	70.00	2.756	75	1.81
16	MSS16091	75.00	2.953	75	1.93
17	MSS17091	80.00	3.150	75	2.06
18	MSS18091	85.00	3.346	75	2.18
19	MSS19091	90.00	3.543	50	1.53
20	MSS20091	95.00	3.740	50	1.61
21	MSS21091	100.00	3.937	50	1.69
22	MSS22091	105.00	4.134	50	1.77
23	MSS23091	110.00	4.331	50	1.85
24	MSS24091	115.00	4.528	50	1.93
25	MSS25091	120.00	4.724	50	2.02

MSS_093
7.5 mm / .295" Pitch
Weight per pole: 1.78 g

Poles	STD Code	L [mm]	L [inch]	Pcs/pack.	W [kg]
02	MSS02093	7.50	0.295	300	1.07
03	MSS03093	15.00	0.591	200	1.07
04	MSS04093	22.50	0.886	150	1.07

MSS_092
10 mm / .394" Pitch
Weight per pole: 1.82 g

Poles	STD Code	L [mm]	L [inch]	Pcs/pack.	W [kg]
02	MSS02092	10.00	0.394	300	1.09
03	MSS03092	20.00	0.787	175	0.96
04	MSS04092	30.00	1.181	125	0.91
05	MSS05092	40.00	1.575	100	0.91
06	MSS06092	50.00	1.969	75	0.82
07	MSS07092	60.00	2.362	75	0.96
08	MSS08092	70.00	2.756	75	1.09
09	MSS09092	80.00	3.150	75	1.23
10	MSS10092	90.00	3.543	50	0.91
11	MSS11092	100.00	3.937	50	1.00
12	MSS12092	110.00	4.331	50	1.09
13	MSS13092	120.00	4.724	50	1.18



MSS_095
5.08 mm / .200" Pitch
Weight per pole: 1.61 g

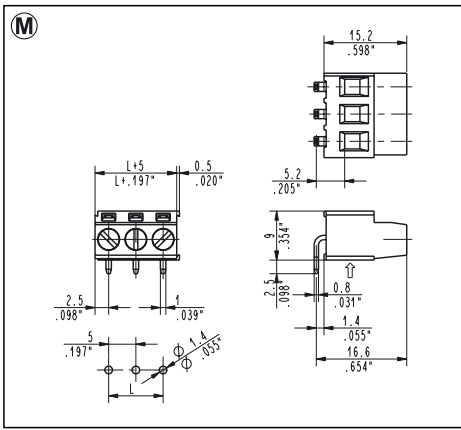
Poles	STD Code	L [mm]	L [inch]	Pcs/pack.	W [kg]
02	MSS02095	5.08	0.200	900	2.90
03	MSS03095	10.16	0.400	600	2.90
04	MSS04095	15.24	0.600	400	2.58
05	MSS05095	20.32	0.800	350	2.82
06	MSS06095	25.40	1.000	300	2.90
07	MSS07095	30.48	1.200	250	2.82
08	MSS08095	35.56	1.400	200	2.58
09	MSS09095	40.64	1.600	175	2.54
10	MSS10095	45.72	1.800	175	2.82
11	MSS11095	50.80	2.000	150	2.66
12	MSS12095	55.88	2.200	150	2.90
13	MSS13095	60.96	2.400	75	1.57
14	MSS14095	66.04	2.600	75	1.69
15	MSS15095	71.12	2.800	75	1.81
16	MSS16095	76.20	3.000	75	1.93
17	MSS17095	81.28	3.200	75	2.06
18	MSS18095	86.36	3.400	75	2.18
19	MSS19095	91.44	3.600	50	1.53
20	MSS20095	96.52	3.800	50	1.61
21	MSS21095	101.60	4.000	50	1.69
22	MSS22095	106.68	4.200	50	1.77
23	MSS23095	111.76	4.400	50	1.85
24	MSS24095	116.84	4.600	50	1.93
25	MSS25095	121.92	4.800	50	2.02

MSS_097
7.62 mm / .300" Pitch
Weight per pole: 1.78 g

Poles	STD Code	L [mm]	L [inch]	Pcs/pack.	W [kg]
02	MSS02097	7.62	0.300	300	1.07
03	MSS03097	15.24	0.600	200	1.07

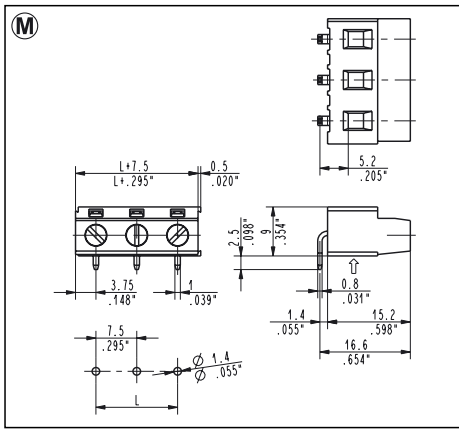
MSS_096
10.16 mm / .400" Pitch
Weight per pole: 1.82 g

Poles	STD Code	L [mm]	L [inch]	Pcs/pack.	W [kg]
02	MSS02096	10.16	0.400	300	1.09
03	MSS03096	20.32	0.800	175	0.96
04	MSS04096	30.48	1.200	125	0.91
05	MSS05096	40.64	1.600	100	0.91
06	MSS06096	50.80	2.000	75	0.82
07	MSS07096	60.96	2.400	75	0.96
08	MSS08096	71.12	2.800	75	1.09
09	MSS09096	81.28	3.200	75	1.23
10	MSS10096	91.44	3.600	50	0.91
11	MSS11096	101.60	4.000	50	1.00
12	MSS12096	111.76	4.400	50	1.09
13	MSS13096	121.92	4.800	50	1.18



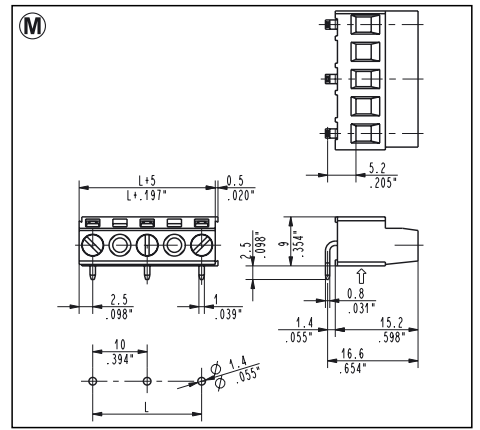
MSS_051
5 mm / .197" Pitch
270°, Bottom Entry
Weight per pole: 1.61 g

Poles	STD Code	L [mm]	L [inch]	Pcs/pack.	W [kg]
02	MSS02051	5.00	0.197	900	2.90
03	MSS03051	10.00	0.394	600	2.90
04	MSS04051	15.00	0.591	400	2.58
05	MSS05051	20.00	0.787	350	2.82
06	MSS06051	25.00	0.984	300	2.90
07	MSS07051	30.00	1.181	250	2.82
08	MSS08051	35.00	1.378	200	2.58
09	MSS09051	40.00	1.575	175	2.54
10	MSS10051	45.00	1.772	175	2.82
11	MSS11051	50.00	1.969	150	2.66
12	MSS12051	55.00	2.165	150	2.90
13	MSS13051	60.00	2.362	75	1.57
14	MSS14051	65.00	2.559	75	1.69
15	MSS15051	70.00	2.756	75	1.81
16	MSS16051	75.00	2.953	75	1.93
17	MSS17051	80.00	3.150	75	2.06
18	MSS18051	85.00	3.346	75	2.18
19	MSS19051	90.00	3.543	50	1.53
20	MSS20051	95.00	3.740	50	1.61
21	MSS21051	100.00	3.937	50	1.69
22	MSS22051	105.00	4.134	50	1.77
23	MSS23051	110.00	4.331	50	1.85
24	MSS24051	115.00	4.528	50	1.93
25	MSS25051	120.00	4.724	50	2.02



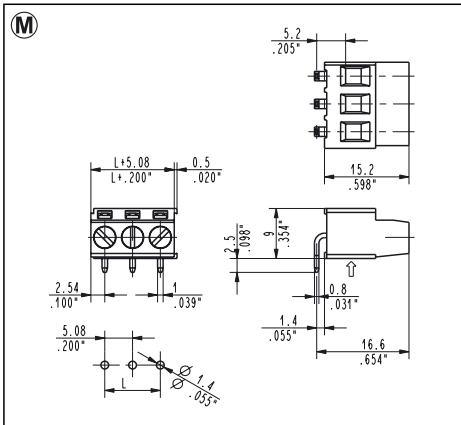
MSS_053
7.5 mm / .295" Pitch
270°, Bottom Entry
Weight per pole: 1.78 g

Poles	STD Code	L [mm]	L [inch]	Pcs/pack.	W [kg]
02	MSS02053	7.50	0.295	300	1.07
03	MSS03053	15.00	0.591	200	1.07
04	MSS04053	22.50	0.886	150	1.07



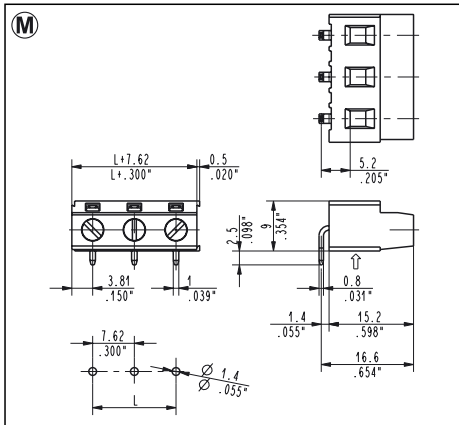
MSS_052
10 mm / .394" Pitch
270°, Bottom Entry
Weight per pole: 1.82 g

Poles	STD Code	L [mm]	L [inch]	Pcs/pack.	W [kg]
02	MSS02052	10.00	0.394	300	1.09
03	MSS03052	20.00	0.787	175	0.96
04	MSS04052	30.00	1.181	125	0.91
05	MSS05052	40.00	1.575	100	0.91
06	MSS06052	50.00	1.969	75	0.82
07	MSS07052	60.00	2.362	75	0.96
08	MSS08052	70.00	2.756	75	1.09
09	MSS09052	80.00	3.150	75	1.23
10	MSS10052	90.00	3.543	50	0.91
11	MSS11052	100.00	3.937	50	1.00
12	MSS12052	110.00	4.331	50	1.09
13	MSS13052	120.00	4.724	50	1.18



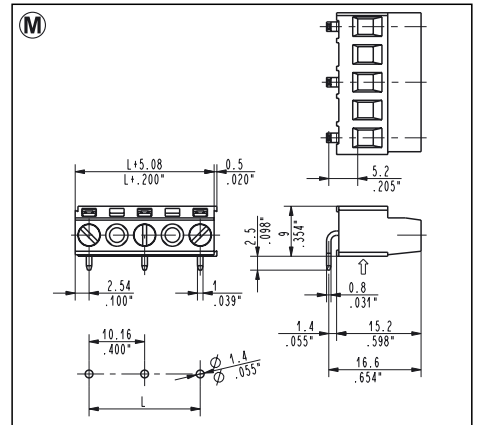
MSS_055
5.08 mm / .200" Pitch
270°, Bottom Entry
Weight per pole: 1.61 g

Poles	STD Code	L [mm]	L [inch]	Pcs/pack.	W [kg]
02	MSS02055	5.08	0.200	900	2.90
03	MSS03055	10.16	0.400	600	2.90
04	MSS04055	15.24	0.600	400	2.58
05	MSS05055	20.32	0.800	350	2.82
06	MSS06055	25.40	1.000	300	2.90
07	MSS07055	30.48	1.200	250	2.82
08	MSS08055	35.56	1.400	200	2.58
09	MSS09055	40.64	1.600	175	2.54
10	MSS10055	45.72	1.800	175	2.82
11	MSS11055	50.80	2.000	150	2.66
12	MSS12055	55.88	2.200	150	2.90
13	MSS13055	60.96	2.400	75	1.57
14	MSS14055	66.04	2.600	75	1.69
15	MSS15055	71.12	2.800	75	1.81
16	MSS16055	76.20	3.000	75	1.93
17	MSS17055	81.28	3.200	75	2.06
18	MSS18055	86.36	3.400	75	2.18
19	MSS19055	91.44	3.600	50	1.53
20	MSS20055	96.52	3.800	50	1.61
21	MSS21055	101.60	4.000	50	1.69
22	MSS22055	106.68	4.200	50	1.77
23	MSS23055	111.76	4.400	50	1.85
24	MSS24055	116.84	4.600	50	1.93
25	MSS25055	121.92	4.800	50	2.02



MSS_057
7.62 mm / .300" Pitch
270°, Bottom Entry
Weight per pole: 1.78 g

Poles	STD Code	L [mm]	L [inch]	Pcs/pack.	W [kg]
02	MSS02057	7.62	0.300	300	1.07
03	MSS03057	15.24	0.600	200	1.07



MSS_056
10.16 mm / .400" Pitch
270°, Bottom Entry
Weight per pole: 1.82 g

Poles	STD Code	L [mm]	L [inch]	Pcs/pack.	W [kg]
02	MSS02056	10.16	0.400	300	1.09
03	MSS03056	20.32	0.800	175	0.96
04	MSS04056	30.48	1.200	125	0.91
05	MSS05056	40.64	1.600	100	0.91
06	MSS06056	50.80	2.000	75	0.82
07	MSS07056	60.96	2.400	75	0.96
08	MSS08056	71.12	2.800	75	1.09
09	MSS09056	81.28	3.200	75	1.23
10	MSS10056	91.44	3.600	50	0.91
11	MSS11056	101.60	4.000	50	1.00
12	MSS12056	111.76	4.400	50	1.09
13	MSS13056	121.92	4.800	50	1.18