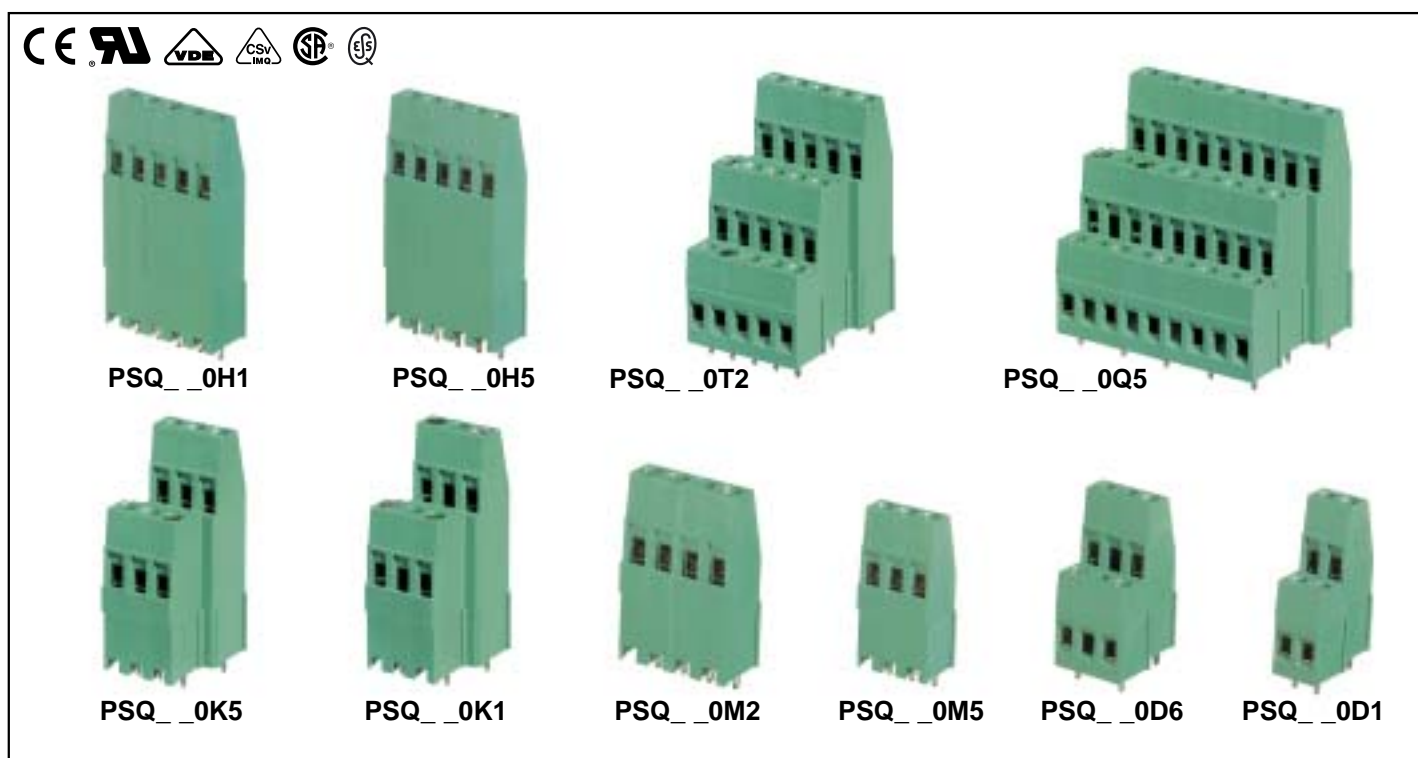




Dimensional Class:	HIGH
Standard Color:	GREEN
Height:	2.303 - 1.772 - 1.240 - .732 in (58.5 - 45.0 - 31.5 - 18.6 mm)
Clamp Opening Size:	.102 x .138 in (2.6 x 3.5 mm)
Wire Diameter:	max. .102 in (5.31 mm ²)
Versions:	Modular with Dovetails
Single Mold Poles:	2 and 3
Metric Pitches:	.197 in (5 mm), .394 in (10 mm)
Imperial Pitches:	.200 in (5.08 mm), .400 in (10.16 mm)

Classe Dimensionale:	ALTA
Colore Standard:	VERDE
Altezza:	58,5 - 45,0 - 31,5 - 18,6 mm
Apertura Introduzione Filo:	2,6 x 3,5 mm
Diametro Filo Inseribile:	max. 2,6 mm (5,31 mm ²)
Versioni:	Modulare con incastro a coda di rondine
Vie Monolitiche:	2 e 3
Passi Metrici:	5 mm, 10 mm
Passi in Pollici:	5,08 mm, 10,16 mm



The PSQ multi-level terminal blocks Series called "PLURIMA" is the most modern wiring and connection compactness solution for printed circuit boards.

The symmetrically offset poles arrangement on 2, 3 and 4 levels guarantees the highest accessibility and good visibility of the connection points.

The 2 and 3 levels blocks are combinable with one another, with the High and Medium Towers and also with the MSQ terminal blocks Series in various and unusual geometrical configurations.

The modular PSQ Series for printed circuit boards satisfies the user's mounting needs with the following possibilities:

- using individual single mold terminal blocks in 2 or 3 poles;
- combining the modular 2 and 3 poles terminal blocks to obtain any number of poles;
- combining the PSQ Series with the MSQ Series;
- being included in a custom Kit package to simplify the product management (part-number reduction), to minimize the stock, to improve the assembly and to reduce production errors.

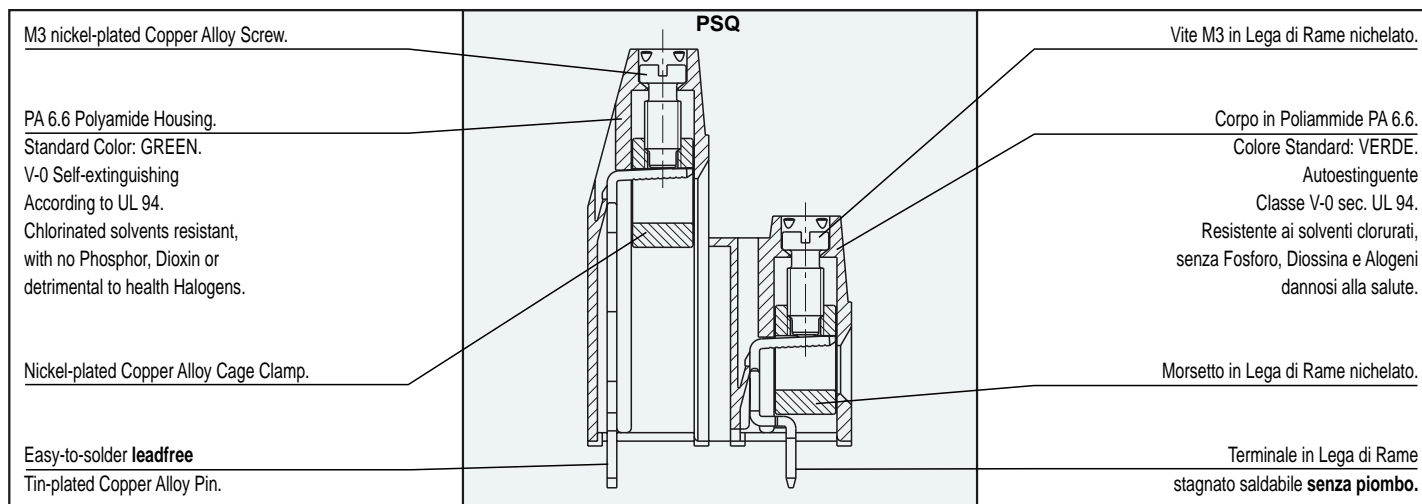
La Serie PSQ della famiglia di morsettiere a più piani denominata "PLURIMA" rappresenta la soluzione più avanzata nei confronti della compattezza del cablaggio e dei collegamenti sul circuito stampato.

La disposizione dei poli su 2, 3 o 4 piani sfalsati simmetricamente garantisce il massimo dell'accessibilità ed una buona visibilità dei punti di connessione.

I blocchi a 2 o 3 piani si possono combinare sia tra di loro, sia con le Torri Medie ed Alte, ma anche con la Serie MSQ in innumerevoli configurazioni geometriche, svariate e fantasiose.

La morsettieria modulare Serie PSQ per circuiti stampati soddisfa le esigenze di montaggio dell'utilizzatore; infatti è possibile:

- utilizzare singolarmente le morsettiere base monolitiche da 2 e 3 vie;
- comporre le morsettiere modulari da 2 e 3 vie per ottenere qualsiasi numero di vie;
- combinare la Serie PSQ con la Serie MSQ;
- utilizzare le confezioni Kit che permettono una semplificazione della gestione del prodotto (riduzione dei part-number), del magazzino, dell'assemblaggio, nonché una riduzione dei rischi d'errore.



Mechanical Characteristics

Recommended tightening torque:	0.8 Nm (UL)*
PCB thickness:	max. .094 in (max. 2.4 mm)
PCB hole diameter:	min. .055 in (min. 1.4 mm)
Stripping length:	.256 ÷ .276 in (6.5 ÷ 7 mm)
Operating temperature range:	-40 °F ÷ +230 °F (-40 °C ÷ +110 °C)
Climatic category:	40/110/21 According to IEC 68-1

Electrical Characteristics

Solid wire section:	30±11 AWG - 0.05±4 mm ² (UL, CSA)*
Stranded wire section:	30±11 AWG - 0.05±2.5 mm ² (UL, CSA)*
Rated voltage:	.197 in (5 mm) and .200 in (5.08 mm) pitch 300 V (UL, CSA)* .394 in (10 mm) and .400 in (10.16 mm) pitch 750 V (IMQ, VDE)*
Rated current:	32 A (IMQ)*
Contact resistance:	<15 mΩ
Insulation resistance:	>10 ⁹ Ω (500V DC)

*All the a.m. data refer to the highest values amongst the certificated ones (). **V** voltage, **I** current values and tightening torque are related to the norms to be applied to the product and to its use.

Caratteristiche Meccaniche

Coppia di serraggio consigliata:	0,8 Nm (UL)*
Spessore circuito stampato:	max. 2,4 mm
Diametro fori circuito stampato:	min. 1,4 mm
Lunghezza di spellatura:	6,5 ÷ 7 mm
Temperature di funzionamento:	-40 °C ÷ +110 °C
Categoria climatica:	40/110/21 Secondo IEC 68-1

Caratteristiche Elettriche

Conduttore connettibile rigido:	0,05±4 mm ² - 30±11 AWG (UL, CSA)*
Conduttore connettibile flessibile:	0,05±2,5 mm ² - 30±11 AWG (UL, CSA)*
Tensione nominale:	passo 5 mm e 5,08 mm 300 V (UL, CSA)* passo 10 mm e 10,16 mm 750 V (IMQ, VDE)*
Corrente nominale:	32 A (IMQ)*
Resistenza di contatto:	<15 mΩ
Resistenza di isolamento:	>10 ⁹ Ω (500V CC)

*Per ogni caratteristica, i dati riportati si riferiscono ai massimi valori fra quelli certificati (). I valori di tensione **V** corrente **I** e, coppia di serraggio sono legati alle norme applicabili al prodotto ed al tipo di utilizzo.

Approvals

(see also "Certifications", page 22)



VDE:	Reg. N. 5659 ÜG
	250 V - 24 A - T 110 - 2.5 mm ² for 5 mm and 5.08 mm pitch (a)
(a)	250 V - 20 A - T 110 - 2.5 mm ² for PSQ_0D1, PSQ_0D5, PSQ_0T1, PSQ_0T5
	750 V - 24 A - T 110 - 2.5 mm ² for 10 mm and 10.16 mm pitch (b)
(b)	750 V - 20 A - T 110 - 2.5 mm ² for PSQ_0D2, PSQ_0D6, PSQ_0T2, PSQ_0T6

IMQ:	Certificate with Surveillance IMQ CSv ED623
ESS:	250 V - T 110 - 32 A - 4 mm ² solid (24 A - 2.5 mm ² stranded) for 5 mm and 5.08 mm pitch
	750 V - T 110 - 32 A - 4 mm ² solid (24 A - 2.5 mm ² stranded) for 10 mm and 10.16 mm pitch

CSA:	File LR 102896-1
	300 V - 24 A - 30±11 AWG for 5 mm and 5.08 mm pitch
	600 V - 24 A - 30±11 AWG for 10 mm and 10.16 mm pitch

UL:	File E 167473
	300 V - 24 A (Factory Wiring), 20 A (Field Wiring) - 30±12 AWG for 5 mm and 5.08 mm pitch
	600 V - 24 A (Factory Wiring), 20 A (Field Wiring) - 30±12 AWG for 10 mm and 10.16 mm pitch
	Application values for end-use equipment have to be in accordance to UL norms and applicable to it.

Certificazioni

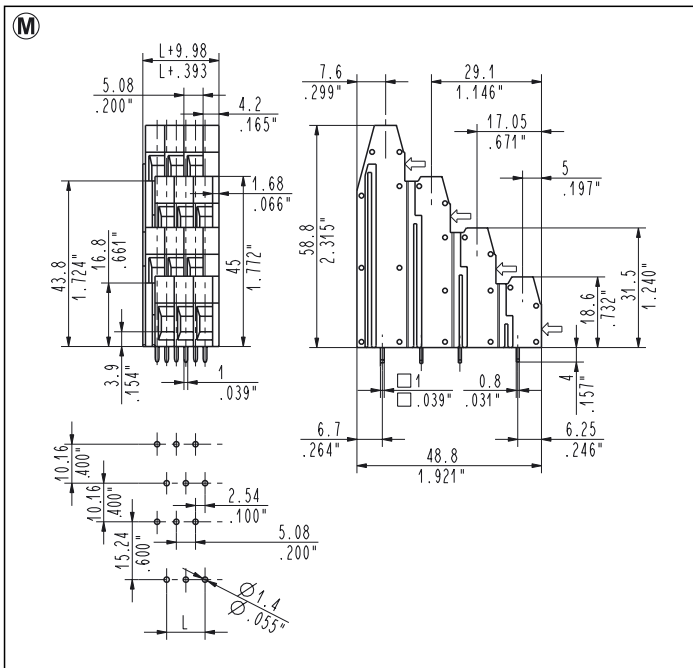
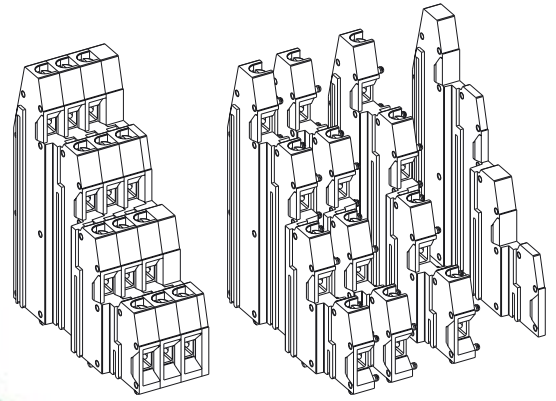
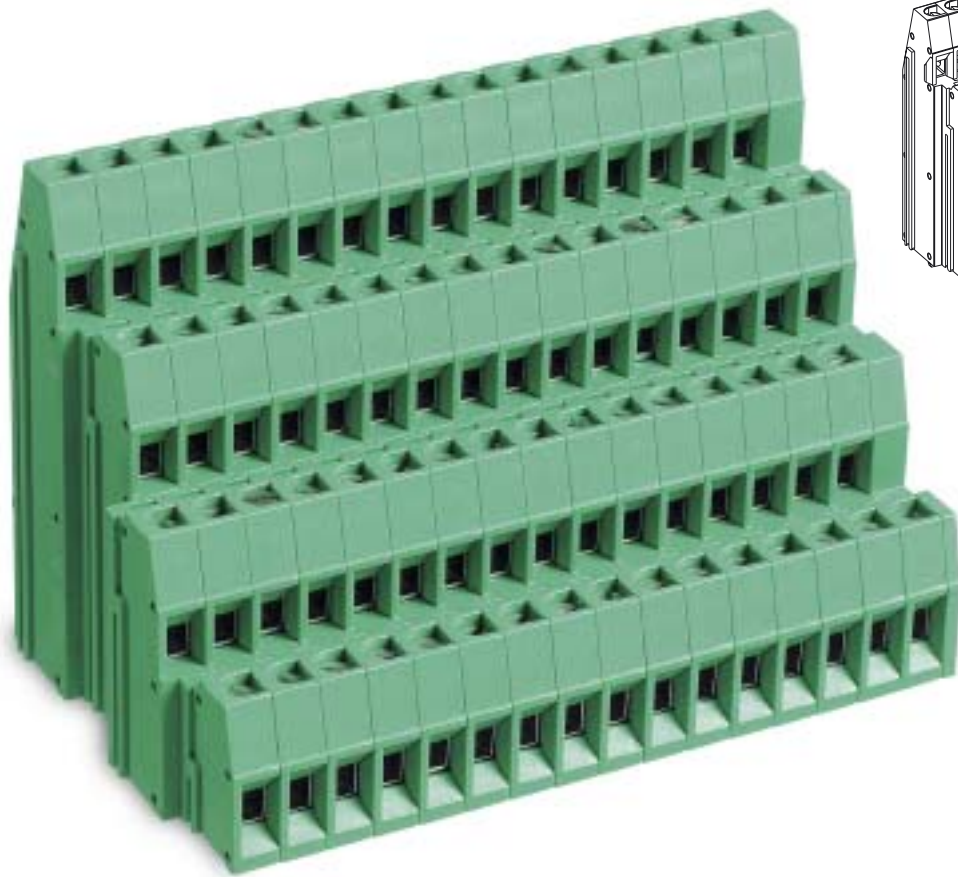
(vedi anche "Certificazioni", pag. 22)

VDE:	Reg. N. 5659 ÜG
	250 V - 24 A - T 110 - 2,5 mm ² per passo 5 mm e 5,08 mm (a)
(a)	250 V - 20 A - T 110 - 2,5 mm ² per PSQ_0D1, PSQ_0D5, PSQ_0T1, PSQ_0T5
	750 V - 24 A - T 110 - 2,5 mm ² per passo 10 mm e 10,16 mm (b)
(b)	750 V - 20 A - T 110 - 2,5 mm ² per PSQ_0D2, PSQ_0D6, PSQ_0T2, PSQ_0T6

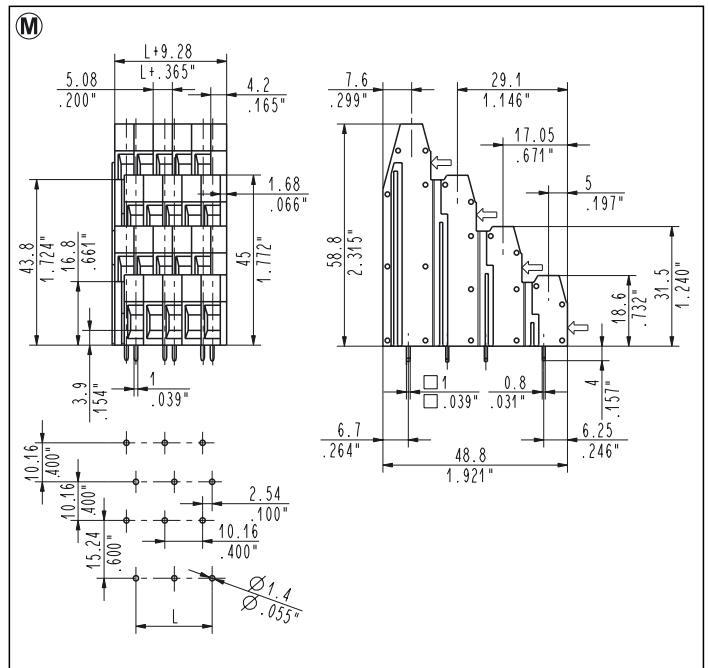
IMQ:	Certificato con Sorveglianza IMQ CSv ED623
ESS:	250 V - T 110 - 32 A - 4 mm ² rigido (24 A - 2,5 mm ² flessibile) per passo 5 mm e 5,08 mm
	750 V - T 110 - 32 A - 4 mm ² rigido (24 A - 2,5 mm ² flessibile) per passo 10 mm e 10,16 mm

CSA:	File LR 102896-1
	300 V - 24 A - 30±11 AWG per passo 5 mm e 5,08 mm
	600 V - 24 A - 30±11 AWG per passo 10 mm e 10,16 mm

UL:	File E 167473
	300 V - 24 A (Factory Wiring), 20 A (Field Wiring) - 30±12 AWG per passo 5 mm e 5,08 mm
	600 V - 24 A (Factory Wiring), 20 A (Field Wiring) - 30±12 AWG per passo 10 mm e 10,16 mm
	I valori di utilizzo per l'apparecchiatura finale devono essere conformi alle norme UL ad essa applicabili.



PSQ_0Q5 4 Levels
5.08 mm / .200" Pitch Weight per pole: 3.82 g



PSQ_0Q6 4 Levels
10.16 mm / .400" Pitch Weight per pole: 3.81 g

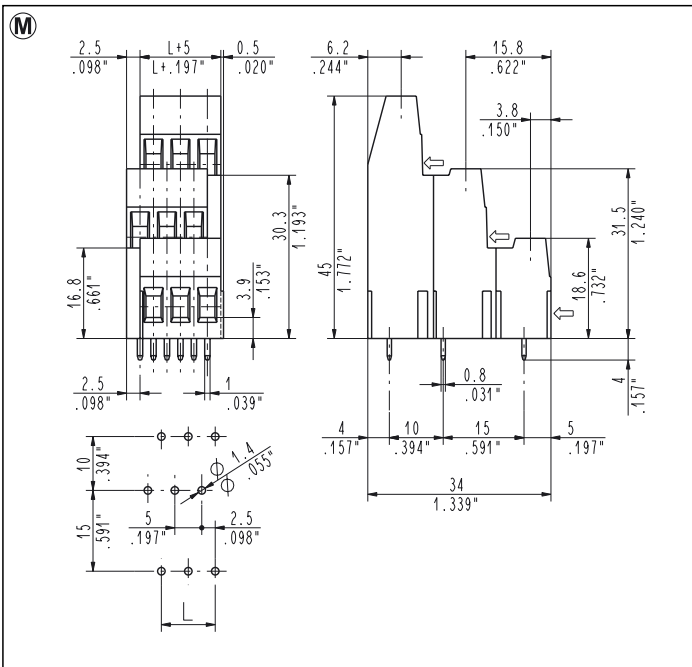
Assembled Terminal Blocks

Poles per Level	STD Code	L [mm]	L [inch]	Pcs/pack.	W [kg]
02	PSQ020Q5	5.08	0.200	70	2.14
03	PSQ030Q5	10.16	0.400	50	2.29
04	PSQ040Q5	15.24	0.600	40	2.44
05	PSQ050Q5	20.32	0.800	30	2.29
06	PSQ060Q5	25.40	1.000	30	2.75
07	PSQ070Q5	30.48	1.200	20	0.00
08	PSQ080Q5	35.56	1.400	20	0.00
09	PSQ090Q5	40.64	1.600	20	0.00
10	PSQ100Q5	45.72	1.800	20	0.00
11	PSQ110Q5	50.80	2.000	10	0.00
12	PSQ120Q5	55.88	2.200	10	0.00

Assembled Terminal Blocks

Poles per Level	STD Code	L [mm]	L [inch]	Pcs/pack.	W [kg]
02	PSQ020Q6	10.16	0.400	50	1.22
03	PSQ030Q6	20.32	0.800	30	1.37
04	PSQ040Q6	30.48	1.200	20	0.00
05	PSQ050Q6	40.64	1.600	20	0.00
06	PSQ060Q6	50.80	2.000	10	0.00
07	PSQ070Q6	60.96	2.400	10	0.00
08	PSQ080Q6	71.12	2.800	10	0.00
09	PSQ090Q6	81.28	3.200	10	0.00
10	PSQ100Q6	91.44	3.600	10	0.00
11	PSQ110Q6	101.60	4.000	10	0.00
12	PSQ120Q6	111.76	4.400	5	0.00

W [kg] : Approximate weight per box in kg

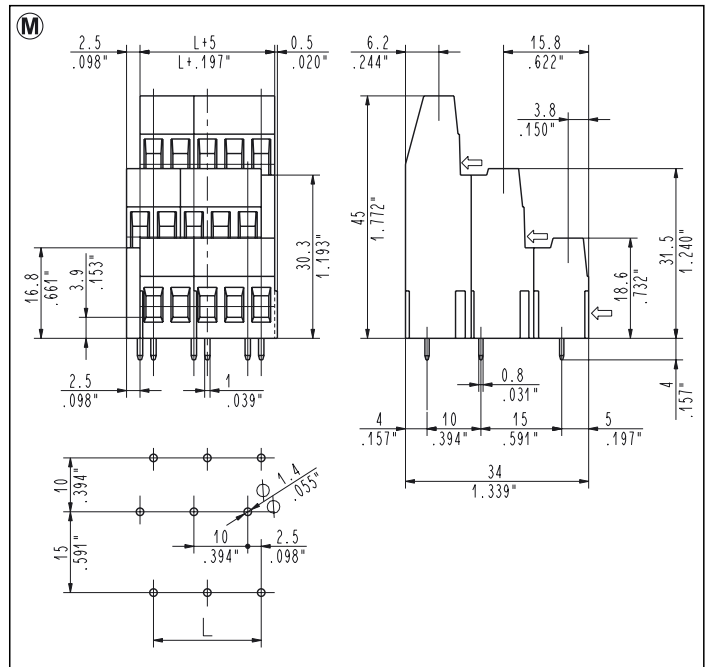


PSQ_0T1 3 Levels
5 mm / .197" Pitch Weight per pole: 2.91 g

Single Mold Terminal Blocks

Poles per Level	STD Code	L [mm]	L [inch]	Pcs/pack.	W [kg]
02	PSQ020T1	5.00	0.197	75	1.31
03	PSQ030T1	10.00	0.394	50	1.31

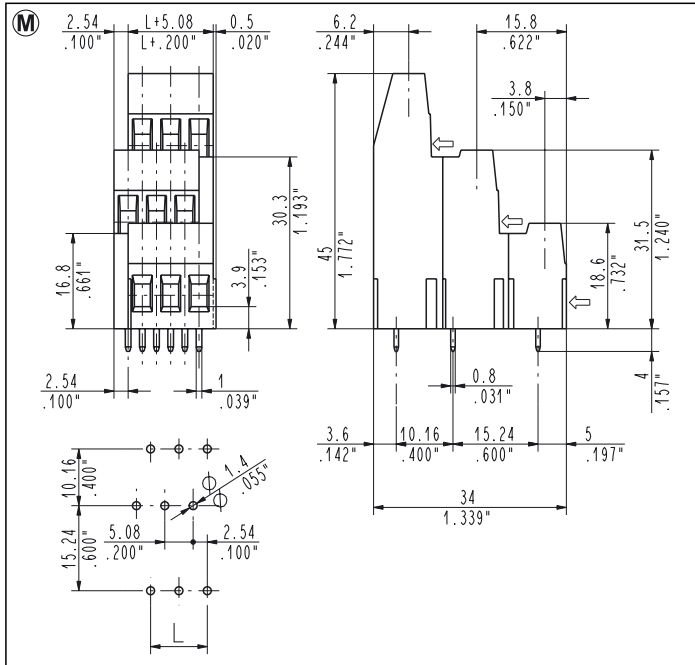
More poles are obtainable by combining modular Plurima of 2 and 3 poles



PSQ_0T2 3 Levels
10 mm / .394" Pitch Weight per pole: 3.27 g

Assembled Terminal Blocks

Poles per Level	STD Code	L [mm]	L [inch]	Pcs/pack.	W [kg]
02	PSQ020T2	10.00	0.394	50	0.98
03	PSQ030T2	20.00	0.787	50	1.47
04	PSQ040T2	30.00	1.181	35	1.38
05	PSQ050T2	40.00	1.575	25	1.23
06	PSQ060T2	50.00	1.969	25	1.47
07	PSQ070T2	60.00	2.362	15	1.03
08	PSQ080T2	70.00	2.756	15	1.18
09	PSQ090T2	80.00	3.150	10	0.88
10	PSQ100T2	90.00	3.543	10	0.98
11	PSQ110T2	100.00	3.937	10	1.08
12	PSQ120T2	110.00	4.331	10	1.18
13	PSQ130T2	120.00	4.724	8	1.02

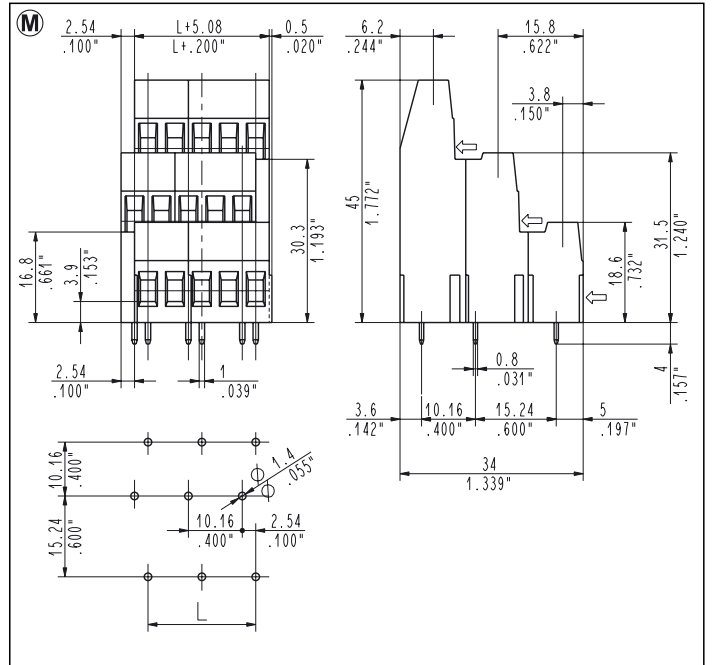


PSQ_0T5 3 Levels
5.08 mm / .200" Pitch Weight per pole: 2.91 g

Single Mold Terminal Blocks

Poles per Level	STD Code	L [mm]	L [inch]	Pcs/pack.	W [kg]
02	PSQ020T5	5.08	0.200	75	1.31
03	PSQ030T5	10.16	0.400	50	1.31

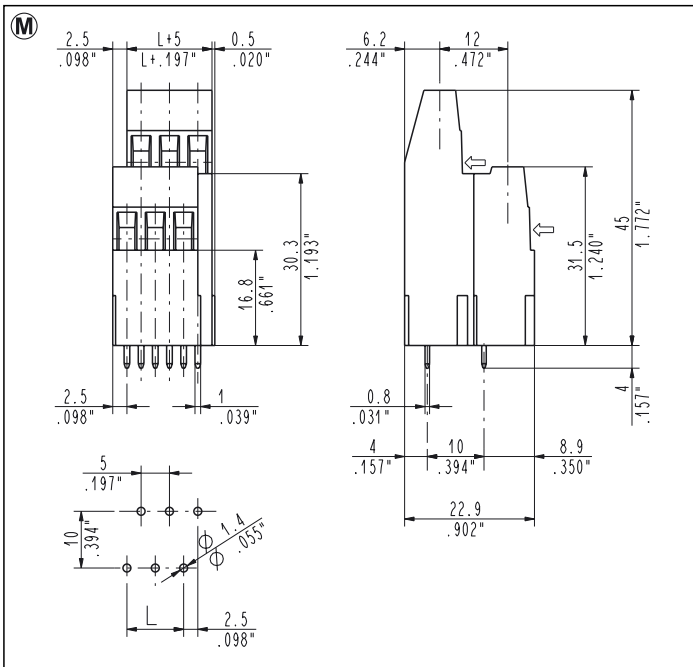
More poles are obtainable by combining modular Plurima of 2 and 3 poles



PSQ_0T6 3 Levels
10.16 mm / .400" Pitch Weight per pole: 3.27 g

Assembled Terminal Blocks

Poles per Level	STD Code	L [mm]	L [inch]	Pcs/pack.	W [kg]
02	PSQ020T6	10.16	0.400	50	0.98
03	PSQ030T6	20.32	0.800	50	1.47
04	PSQ040T6	30.48	1.200	35	1.38
05	PSQ050T6	40.64	1.600	25	1.23
06	PSQ060T6	50.80	2.000	25	1.47
07	PSQ070T6	60.96	2.400	15	1.03
08	PSQ080T6	71.12	2.800	15	1.18
09	PSQ090T6	81.28	3.200	10	0.88
10	PSQ100T6	91.44	3.600	10	0.98
11	PSQ110T6	101.60	4.000	10	1.08
12	PSQ120T6	111.76	4.400	10	1.18
13	PSQ130T6	121.92	4.800	8	1.02

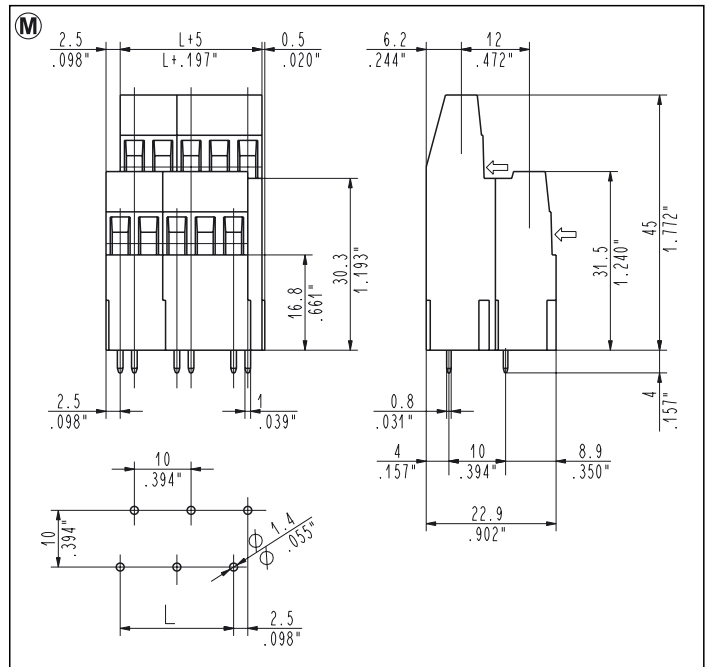


PSQ_0K1 2nd & 3rd Levels
5 mm / .197" Pitch Weight per pole: 3.12 g

Single Mold Terminal Blocks

Poles per Level	STD Code	L [mm]	L [inch]	Pcs/pack.	W [kg]
02	PSQ020K1	5.00	0.197	150	1.87
03	PSQ030K1	10.00	0.394	100	1.87

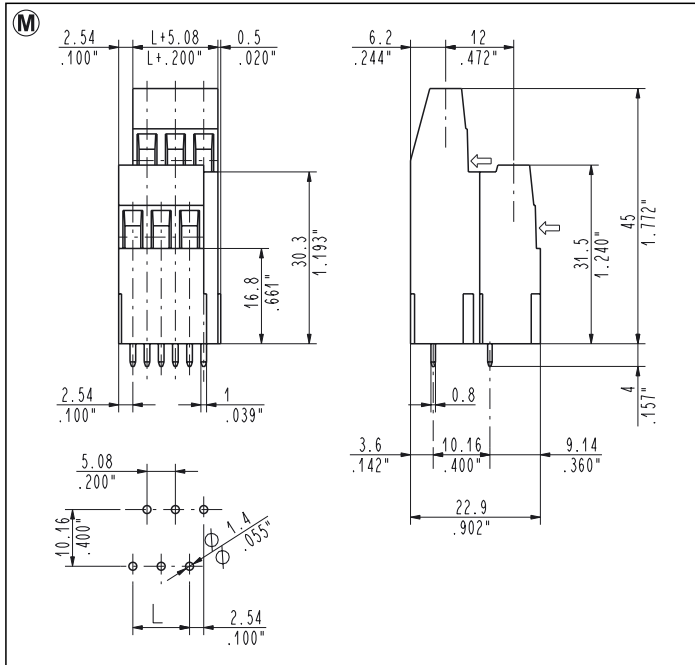
More poles are obtainable by combining modular Plurima of 2 and 3 poles



PSQ_0K2 2nd & 3rd Levels
10 mm / .394" Pitch Weight per pole: 3.90 g

Assembled Terminal Blocks

Poles per Level	STD Code	L [mm]	L [inch]	Pcs/pack.	W [kg]
02	PSQ020K2	10.00	0.394	100	1.56
03	PSQ030K2	20.00	0.787	60	1.40
04	PSQ040K2	30.00	1.181	45	1.40
05	PSQ050K2	40.00	1.575	35	1.36
06	PSQ060K2	50.00	1.969	30	1.40
07	PSQ070K2	60.00	2.362	20	1.09
08	PSQ080K2	70.00	2.756	20	1.24
09	PSQ090K2	80.00	3.150	20	1.40
10	PSQ100K2	90.00	3.543	15	1.17
11	PSQ110K2	100.00	3.937	15	1.28
12	PSQ120K2	110.00	4.331	15	1.40
13	PSQ130K2	120.00	4.724	10	1.01

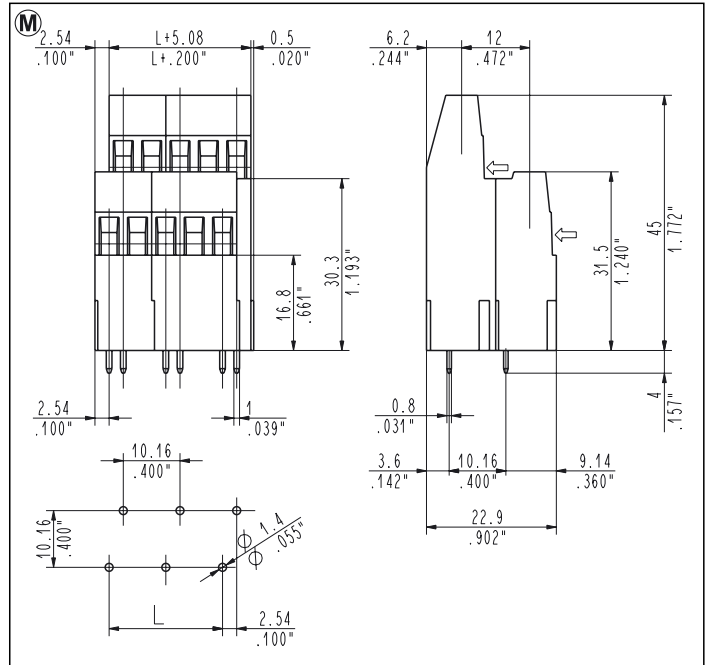


PSQ_0K5 2nd & 3rd Levels
5.08 mm / .200" Pitch Weight per pole: 3.12 g

Single Mold Terminal Blocks

Poles per Level	STD Code	L [mm]	L [inch]	Pcs/pack.	W [kg]
02	PSQ020K5	5.08	0.200	150	1.87
03	PSQ030K5	10.16	0.400	100	1.87

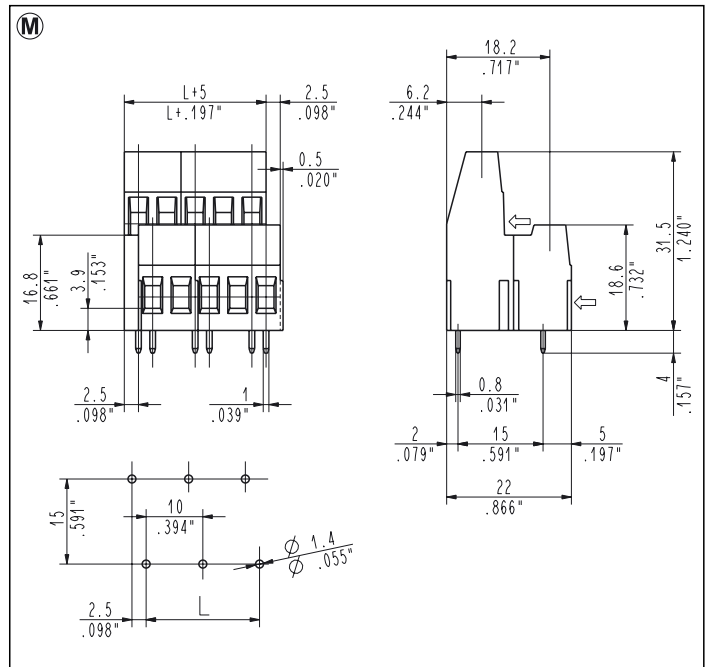
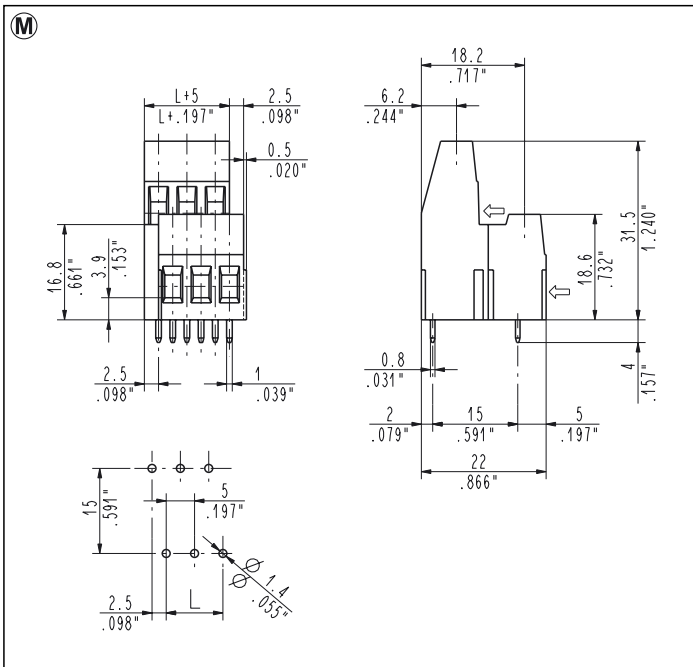
More poles are obtainable by combining modular Plurima of 2 and 3 poles



PSQ_0K6 2nd & 3rd Levels
10.16 mm / .400" Pitch Weight per pole: 3.90 g

Assembled Terminal Blocks

Poles per Level	STD Code	L [mm]	L [inch]	Pcs/pack.	W [kg]
02	PSQ020K6	10.16	0.400	100	1.56
03	PSQ030K6	20.32	0.800	60	1.40
04	PSQ040K6	30.48	1.200	45	1.40
05	PSQ050K6	40.64	1.600	35	1.36
06	PSQ060K6	50.80	2.000	30	1.40
07	PSQ070K6	60.96	2.400	20	1.09
08	PSQ080K6	71.12	2.800	20	1.24
09	PSQ090K6	81.28	3.200	20	1.40
10	PSQ100K6	91.44	3.600	15	1.17
11	PSQ110K6	101.60	4.000	15	1.28
12	PSQ120K6	111.76	4.400	15	1.40
13	PSQ130K6	121.92	4.800	10	1.01



PSQ_0D1 1st & 2nd Levels
5 mm / .197" Pitch Weight per pole: 2.45 g

PSQ_0D2 1st & 2nd Levels
10 mm / .394" Pitch Weight per pole: 2.87 g

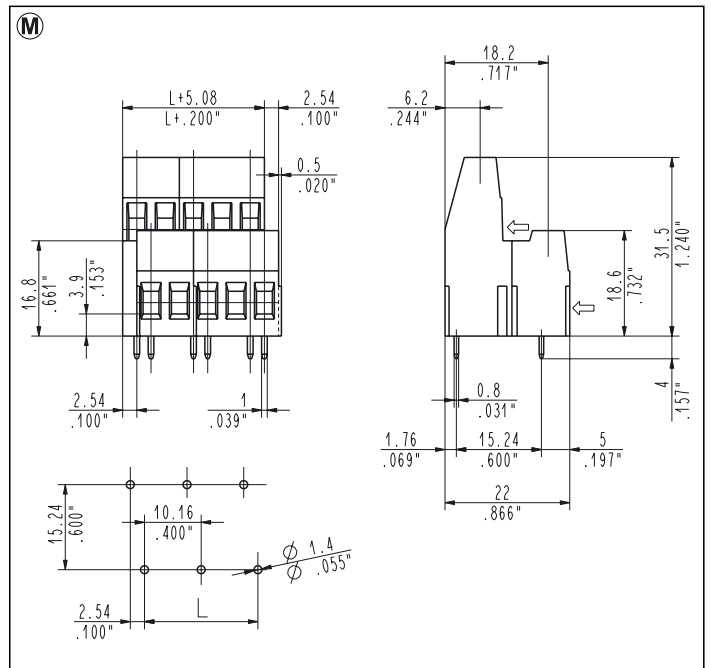
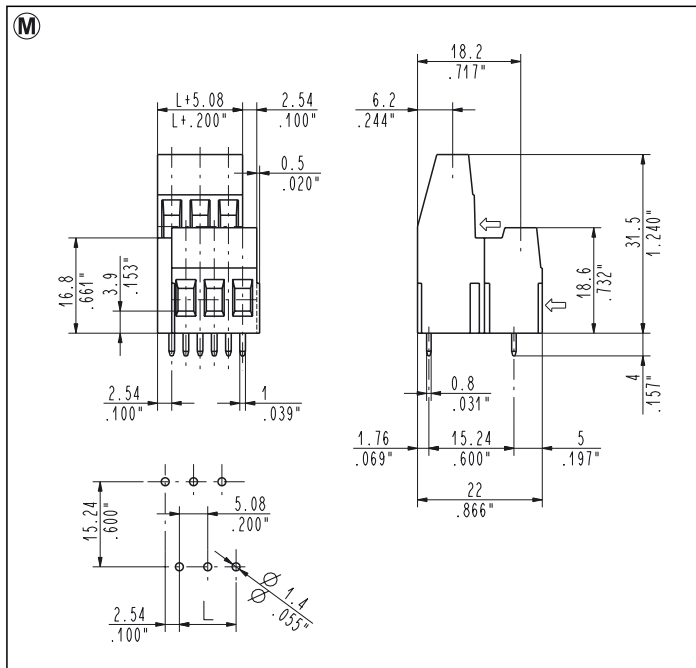
Single Mold Terminal Blocks

Assembled Terminal Blocks

Poles per Level	STD Code	L [mm]	L [inch]	Pcs/pack.	W [kg]
02	PSQ020D1	5.00	0.197	200	1.96
03	PSQ030D1	10.00	0.394	150	2.20

Poles per Level	STD Code	L [mm]	L [inch]	Pcs/pack.	W [kg]
02	PSQ020D2	10.00	0.394	150	1.72
03	PSQ030D2	20.00	0.787	100	1.72
04	PSQ040D2	30.00	1.181	80	1.83
05	PSQ050D2	40.00	1.575	65	1.86
06	PSQ060D2	50.00	1.969	50	1.72
07	PSQ070D2	60.00	2.362	35	1.40
08	PSQ080D2	70.00	2.756	35	1.60
09	PSQ090D2	80.00	3.150	30	1.54
10	PSQ100D2	90.00	3.543	30	1.72
11	PSQ110D2	100.00	3.937	25	1.57
12	PSQ120D2	110.00	4.331	25	1.72
13	PSQ130D2	120.00	4.724	15	1.12

More poles are obtainable by combining modular Plurima of 2 and 3 poles



PSQ_0D5 1st & 2nd Levels
5.08 mm / .200" Pitch Weight per pole: 2.45 g

PSQ_0D6 1st & 2nd Levels
10.16 mm / .400" Pitch Weight per pole: 2.87 g

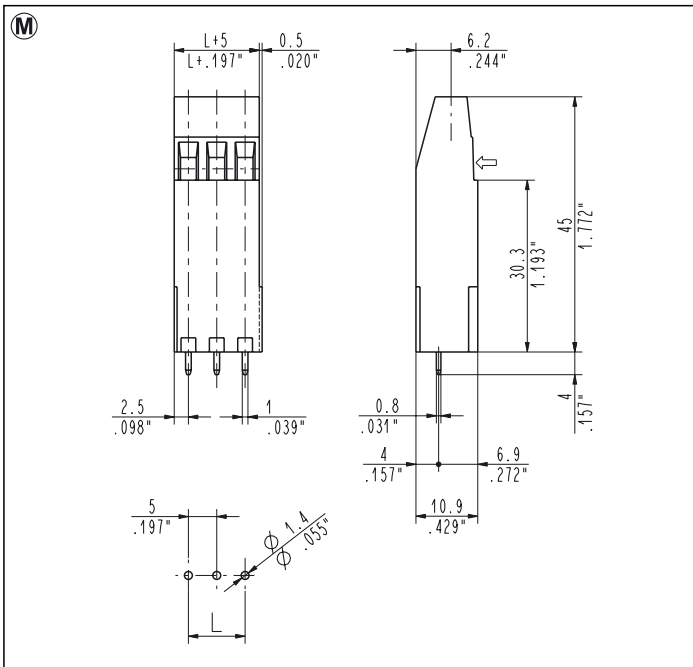
Single Mold Terminal Blocks

Assembled Terminal Blocks

Poles per Level	STD Code	L [mm]	L [inch]	Pcs/pack.	W [kg]
02	PSQ020D5	5.08	0.200	200	1.96
03	PSQ030D5	10.16	0.400	150	2.20

Poles per Level	STD Code	L [mm]	L [inch]	Pcs/pack.	W [kg]
02	PSQ020D6	10.16	0.400	150	1.72
03	PSQ030D6	20.32	0.800	100	1.72
04	PSQ040D6	30.48	1.200	80	1.83
05	PSQ050D6	40.64	1.600	65	1.86
06	PSQ060D6	50.80	2.000	50	1.72
07	PSQ070D6	60.96	2.400	35	1.40
08	PSQ080D6	71.12	2.800	35	1.60
09	PSQ090D6	81.28	3.200	30	1.54
10	PSQ100D6	91.44	3.600	30	1.72
11	PSQ110D6	101.60	4.000	25	1.57
12	PSQ120D6	111.76	4.400	25	1.72
13	PSQ130D6	121.92	4.800	15	1.12

More poles are obtainable by combining modular Plurima of 2 and 3 poles

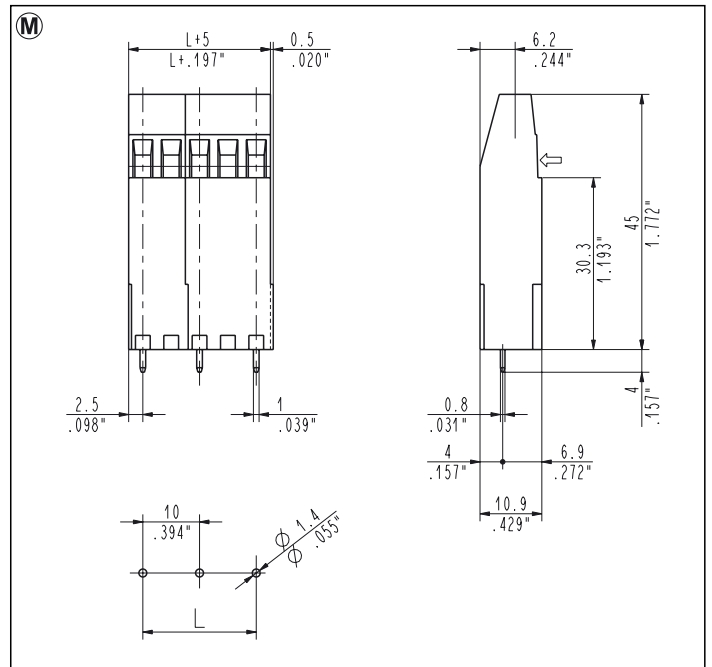


PSQ_0H1 High Tower
5 mm / .197" Pitch Weight per pole: 3.48 g

Single Mold Terminal Blocks

Poles per Level	STD Code	L [mm]	L [inch]	Pcs/pack.	W [kg]
02	PSQ020H1	5.00	0.197	200	1.39
03	PSQ030H1	10.00	0.394	150	1.57

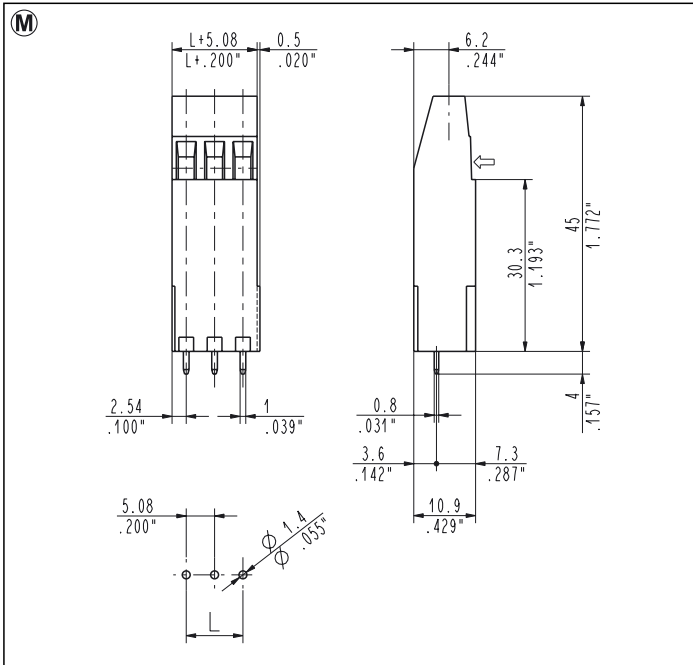
More poles are obtainable by combining modular Plurima of 2 and 3 poles



PSQ_0H2 High Tower
10 mm / .394" Pitch Weight per pole: 4.17 g

Assembled Terminal Blocks

Poles per Level	STD Code	L [mm]	L [inch]	Pcs/pack.	W [kg]
02	PSQ020H2	10.00	0.394	150	1.25
03	PSQ030H2	20.00	0.787	55	0.69
04	PSQ040H2	30.00	1.181	40	0.67
05	PSQ050H2	40.00	1.575	30	0.62
06	PSQ060H2	50.00	1.969	25	0.62
07	PSQ070H2	60.00	2.362	20	0.58
08	PSQ080H2	70.00	2.756	20	0.67
09	PSQ090H2	80.00	3.150	20	0.75
10	PSQ100H2	90.00	3.543	15	0.62
11	PSQ110H2	100.00	3.937	15	0.69
12	PSQ120H2	110.00	4.331	15	0.75
13	PSQ130H2	120.00	4.724	10	0.54

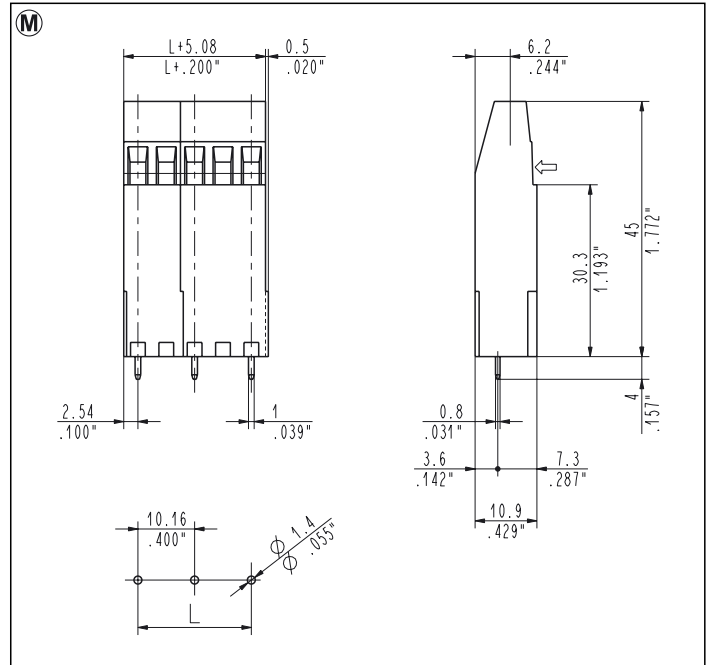


PSQ_0H5 High Tower
5.08 mm / .200" Pitch Weight per pole: 3.48 g

Single Mold Terminal Blocks

Poles per Level	STD Code	L [mm]	L [inch]	Pcs/pack.	W [kg]
02	PSQ020H5	5.08	0.200	200	1.39
03	PSQ030H5	10.16	0.400	150	1.57

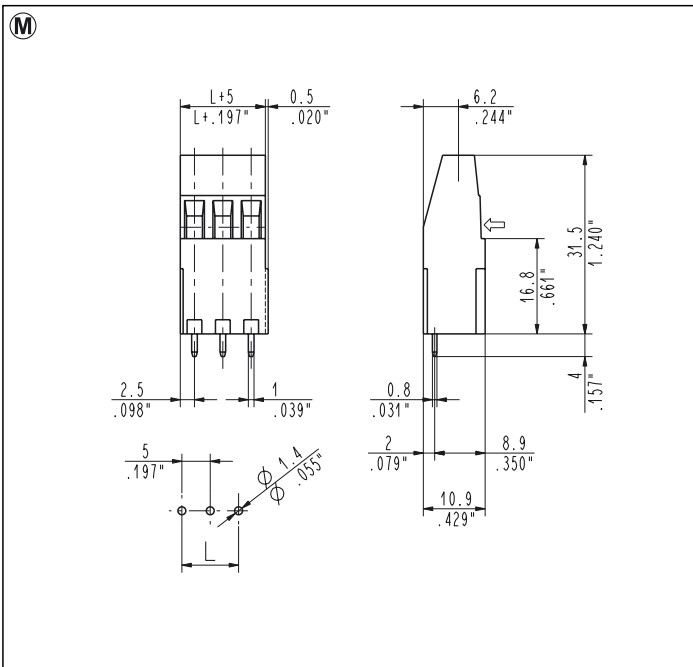
More poles are obtainable by combining modular Plurima of 2 and 3 poles



PSQ_0H6 High Tower
10.16 mm / .400" Pitch Weight per pole: 4.17 g

Assembled Terminal Blocks

Poles per Level	STD Code	L [mm]	L [inch]	Pcs/pack.	W [kg]
02	PSQ020H6	10.16	0.400	150	1.25
03	PSQ030H6	20.32	0.800	55	0.69
04	PSQ040H6	30.48	1.200	40	0.67
05	PSQ050H6	40.64	1.600	30	0.62
06	PSQ060H6	50.80	2.000	25	0.62
07	PSQ070H6	60.96	2.400	20	0.58
08	PSQ080H6	71.12	2.800	20	0.67
09	PSQ090H6	81.28	3.200	20	0.75
10	PSQ100H6	91.44	3.600	15	0.62
11	PSQ110H6	101.60	4.000	15	0.69
12	PSQ120H6	111.76	4.400	15	0.75
13	PSQ130H6	121.92	4.800	10	0.54

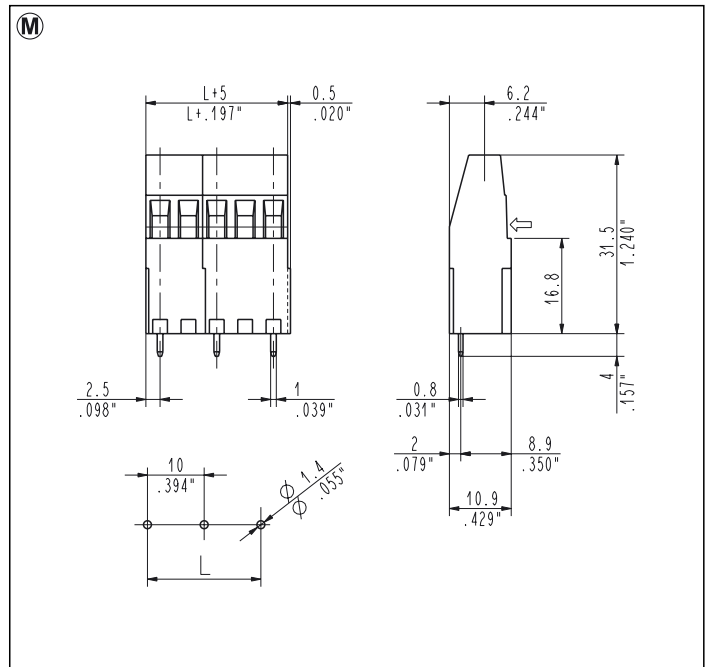


PSQ_0M1 Medium Tower
5 mm / .197" Pitch Weight per pole: 2.75 g

Single Mold Terminal Blocks

Poles per Level	STD Code	L [mm]	L [inch]	Pcs/pack.	W [kg]
02	PSQ020M1	5.00	0.197	400	2.20
03	PSQ030M1	10.00	0.394	250	2.06

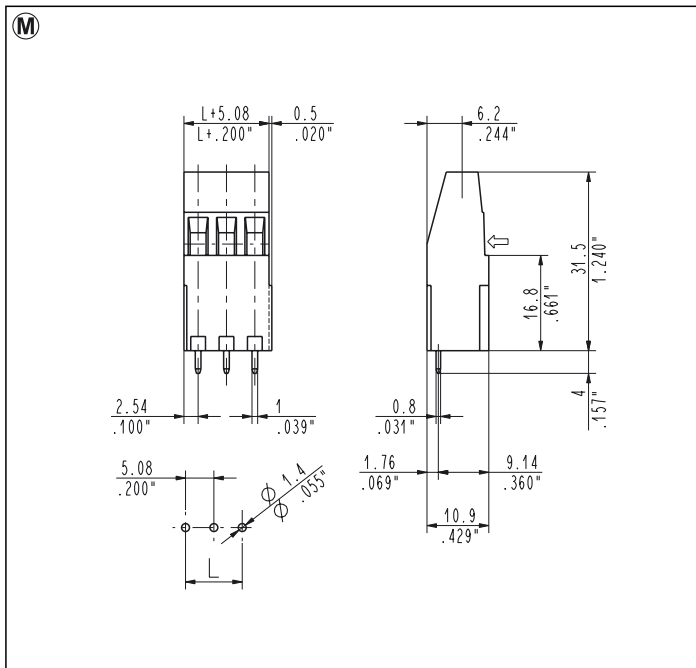
More poles are obtainable by combining modular Plurima of 2 and 3 poles



PSQ_0M2 Medium Tower
10 mm / .394" Pitch Weight per pole: 3.12 g

Assembled Terminal Blocks

Poles per Level	STD Code	L [mm]	L [inch]	Pcs/pack.	W [kg]
02	PSQ020M2	10.00	0.394	250	1.56
03	PSQ030M2	20.00	0.787	80	0.75
04	PSQ040M2	30.00	1.181	60	0.75
05	PSQ050M2	40.00	1.575	45	0.70
06	PSQ060M2	50.00	1.969	35	0.66
07	PSQ070M2	60.00	2.362	25	0.55
08	PSQ080M2	70.00	2.756	25	0.62
09	PSQ090M2	80.00	3.150	25	0.70
10	PSQ100M2	90.00	3.543	20	0.62
11	PSQ110M2	100.00	3.937	20	0.69
12	PSQ120M2	110.00	4.331	20	0.75
13	PSQ130M2	120.00	4.724	10	0.41

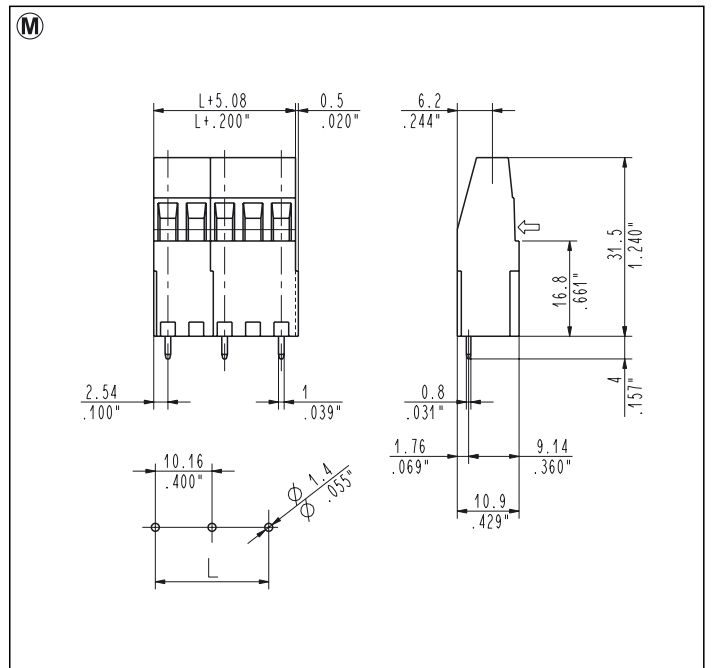


PSQ_0M5 Medium Tower
5.08 mm / .200" Pitch Weight per pole: 2.75 g

Single Mold Terminal Blocks

Poles per Level	STD Code	L [mm]	L [inch]	Pcs/pack.	W [kg]
02	PSQ020M5	5.08	0.200	400	2.20
03	PSQ030M5	10.16	0.400	250	2.06

More poles are obtainable by combining modular Plurima of 2 and 3 poles



PSQ_0M6 Medium Tower
10.16 mm / .400" Pitch Weight per pole: 3.12 g

Assembled Terminal Blocks

Poles per Level	STD Code	L [mm]	L [inch]	Pcs/pack.	W [kg]
02	PSQ020M6	10.16	0.400	250	1.56
03	PSQ030M6	20.32	0.800	80	0.75
04	PSQ040M6	30.48	1.200	60	0.75
05	PSQ050M6	40.64	1.600	45	0.70
06	PSQ060M6	50.80	2.000	35	0.66
07	PSQ070M6	60.96	2.400	25	0.55
08	PSQ080M6	71.12	2.800	25	0.62
09	PSQ090M6	81.28	3.200	25	0.70
10	PSQ100M6	91.44	3.600	20	0.62
11	PSQ110M6	101.60	4.000	20	0.69
12	PSQ120M6	111.76	4.400	20	0.75
13	PSQ130M6	121.92	4.800	10	0.41